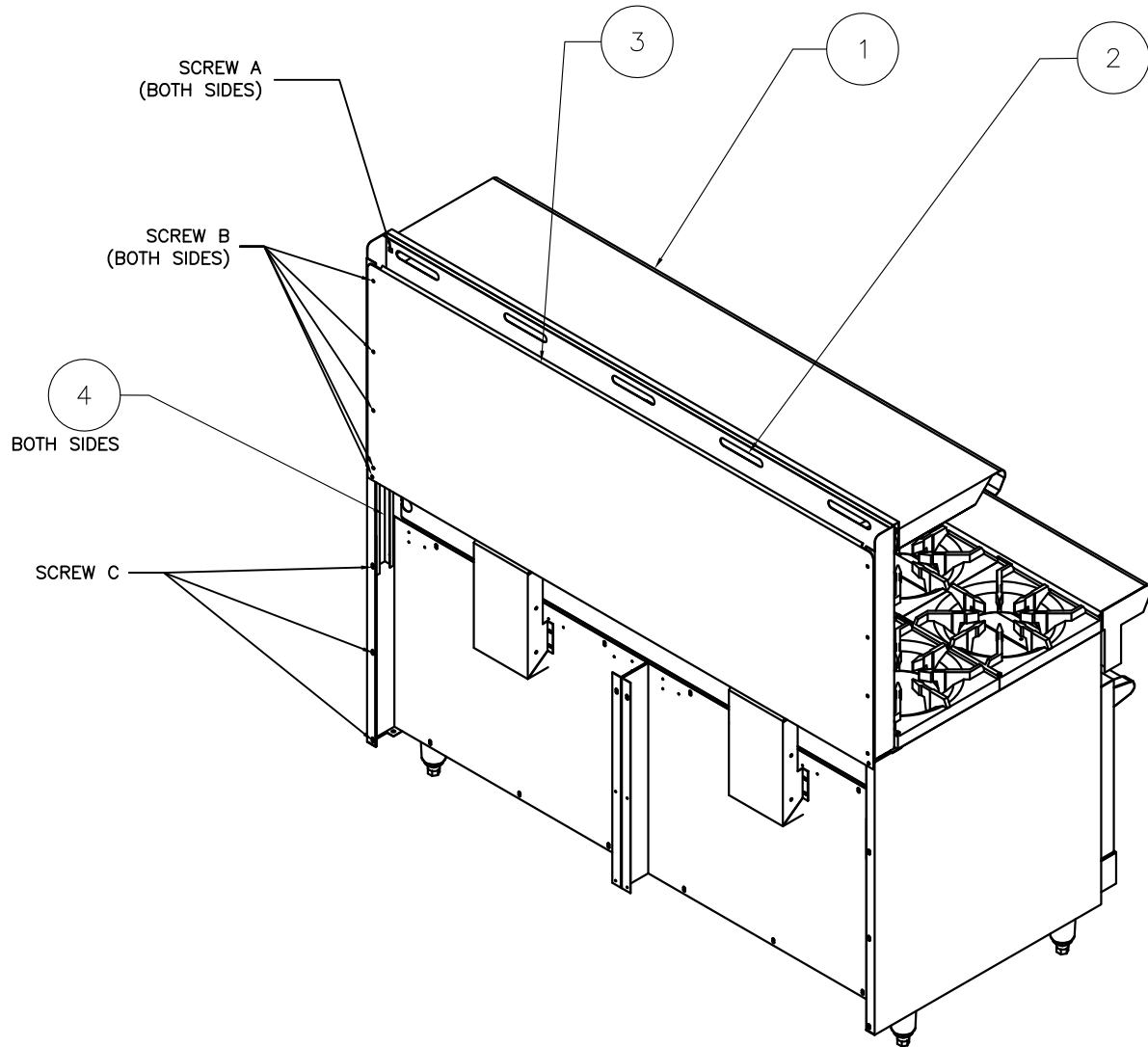


REVISION HISTORY				DATE	APPROVED
ZONE	REV	BY	DESCRIPTION		
-	A	-	RELEASED TO PRODUCTION	5-06-04	N HUTCHINS



- ITEM #1 - SHELF
- ITEM #2 - FRONT HIRISER
- ITEM #3 - REAR HIRISER
- ITEM #4 - CHANNEL

NOTES:

1. REMOVE SHELF (#1) BY UNSCREWING THE 2 SCREWS (A). THE SHELF (#1) WILL NOT BE USED AFTER THE CHEESE MELTER OR SALAMANDER IS INSTALLED.
2. REMOVE 10 SCREWS (B). PUT REAR HIRISER (#3) ASIDE. SLIDE FRONT HIRISER (#2) OUT FROM CHANNELS (#4).
3. FOR RIGHT SIDE MOUNTING: UNSCREW 3 SCREWS (C) SHOWN. ONE CHANNEL (#4) WILL NOT BE USED IN THE NEW ASSEMBLY.
4. FOR LEFT SIDE MOUNTING: UNSCREW 3 SCREWS (C) FROM THE OTHER SIDE OF THE OVEN. THE OTHER CHANNEL (#4) WILL NOT BE USED IN THE NEW ASSEMBLY.

UNLESS OTHERWISE SPECIFIED:		ALL SURFACES TO BE $\frac{1}{16}$ " OR SMOOTHER		TOLERANCES ARE:		DECIMALS FRACTIONS ANGLES		DIMENSIONS ARE IN INCHES		AMERICAN RANGE CORP. 13592 DESMOND ST. PACOIMA, CA 91331	
DIMENSIONS		APPROVALS		DATE		TITLE		SCALE		PART NO.	
DRAWN		DRAWN		DATE		TITLE		SCALE		PART NO.	
MATERIAL		APPROVALS		DATE		TITLE		SCALE		PART NO.	
FINISH		DRAWN		DATE		TITLE		SCALE		PART NO.	
USED ON		DRAWN		DATE		TITLE		SCALE		PART NO.	
N/A		N HUTCHINS		5-06-04		INSTRUCTION CHEESE MELTER OR SALAMANDER MOUNTING ON 60" OVEN		N/A		A70200	
N/A		N HUTCHINS		5-06-04		SCALE		N/A		REV. A	
						SHEET		1 OF 3			

REVISION HISTORY					
ZONE	REV	EDN	DESCRIPTION	DATE	APPROVED
-	A	-	RELEASED TO PRODUCTION	5-06-04	N HUTCHINS

PROVIDED ITEMS:

CHEESE MELTER ARCM OR SALAMANDER ARSM CHANNEL, ITEM #5, QTY 1.
 CHANNEL, ITEM #6, QTY 1.
 ANGLE, ITEM #7, QTY 1
 BOLTS 1/4-20, QTY 6.
 NUTS 1/4-20, QTY 6.
 WASHER 1/4", QTY 6.
 SELF TAPPING SCREW #10, QTY 10

NOTES:

A. MOUNTING ON RIGHT SIDE

1. SLIDE CHANNEL (#6), IN PLACE OF PREVIOUS SHORTER CHANNEL. POSITION SO THAT CUTOUTS ARE ON TOP, AND HOLES ARE TOWARD BACK OF THE OVEN. THE 4 HOLES ON BOTTOM OF CHANNEL (#6) SHOULD BE ALIGNED WITH THE 4 HOLES ON THE SIDE PANEL. TIGHTEN THE CHANNEL WITH 3 SCREWS (C).

2. PLACE ANGLE (#7) AS SHOWN. USING ANGLE AS A TEMPLATE, SECURE WITH 6 #10 SELF-TAPPING SCREWS PROVIDED. SEE DIMENSION 24.38" FOR REFERENCE.

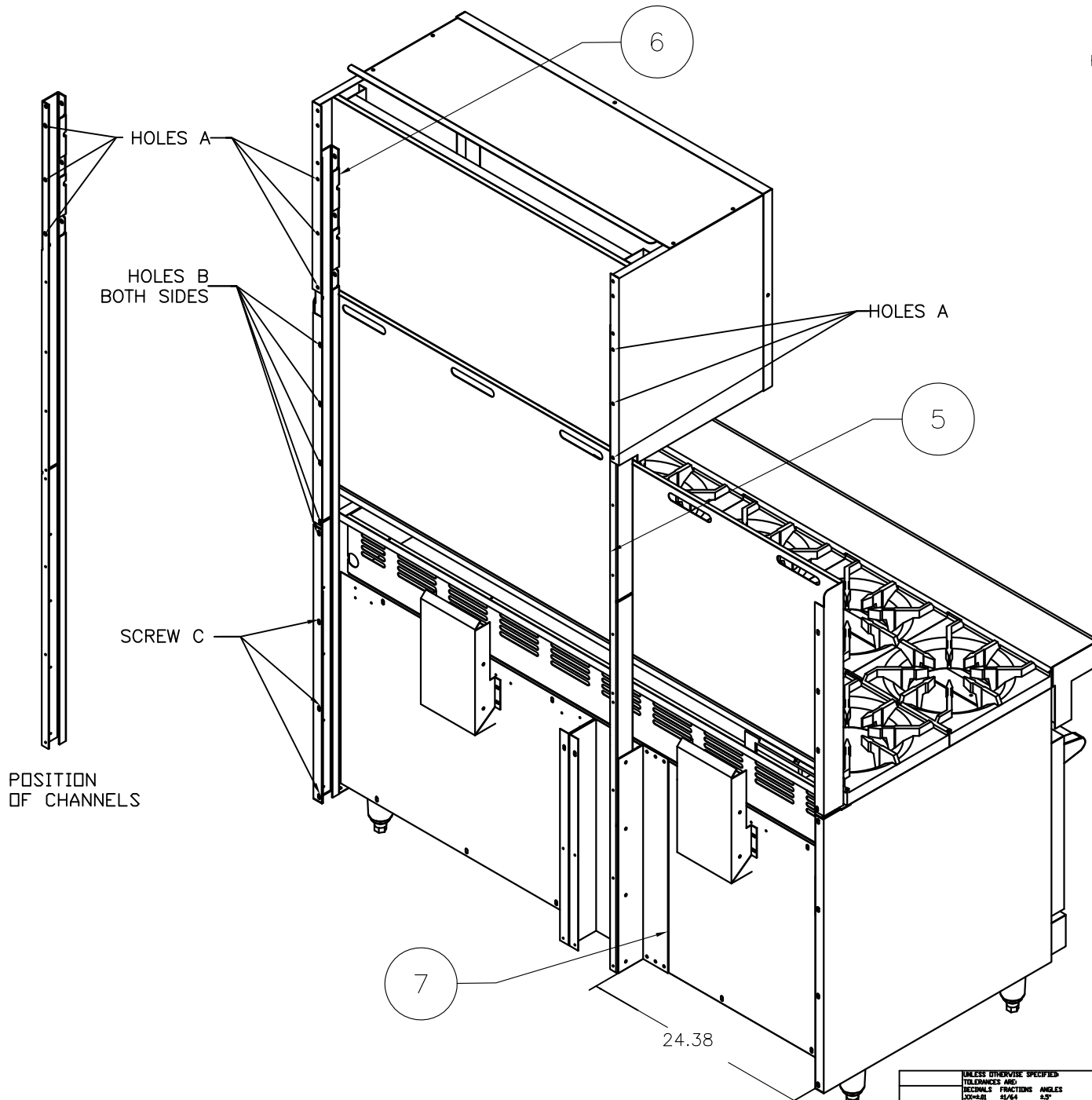
3. SECURE CHANNEL (#5) TO ANGLE (#7), BY ALIGNING THE 4 HOLES ON EACH OF THESE PARTS AND USING THE 4 SELF-TAPPING SCREWS TO TIGHTEN.

4. PLACE FRONT HIRISER ON THE CHANNELS (#4,#6). PLACE REAR HIRISER ON THE BACK OF FRONT HIRISER. SCREW WITH 10 SCREWS (B) AND TIGHTEN.

5. REAR HIRISER IS NOT SHOWN ON PAGE 2 IN ORDER TO SHOW PARTS THAT WOULD OTHERWISE BE COVERED.

6. SLIDE CHEESE MELTER OR SALAMANDER ONTO CHANNELS (#5,#6) AND TIGHTEN WITH BOLTS, 1/4-20 X1", WASHERS, AND NUTS, USING HOLES (A).

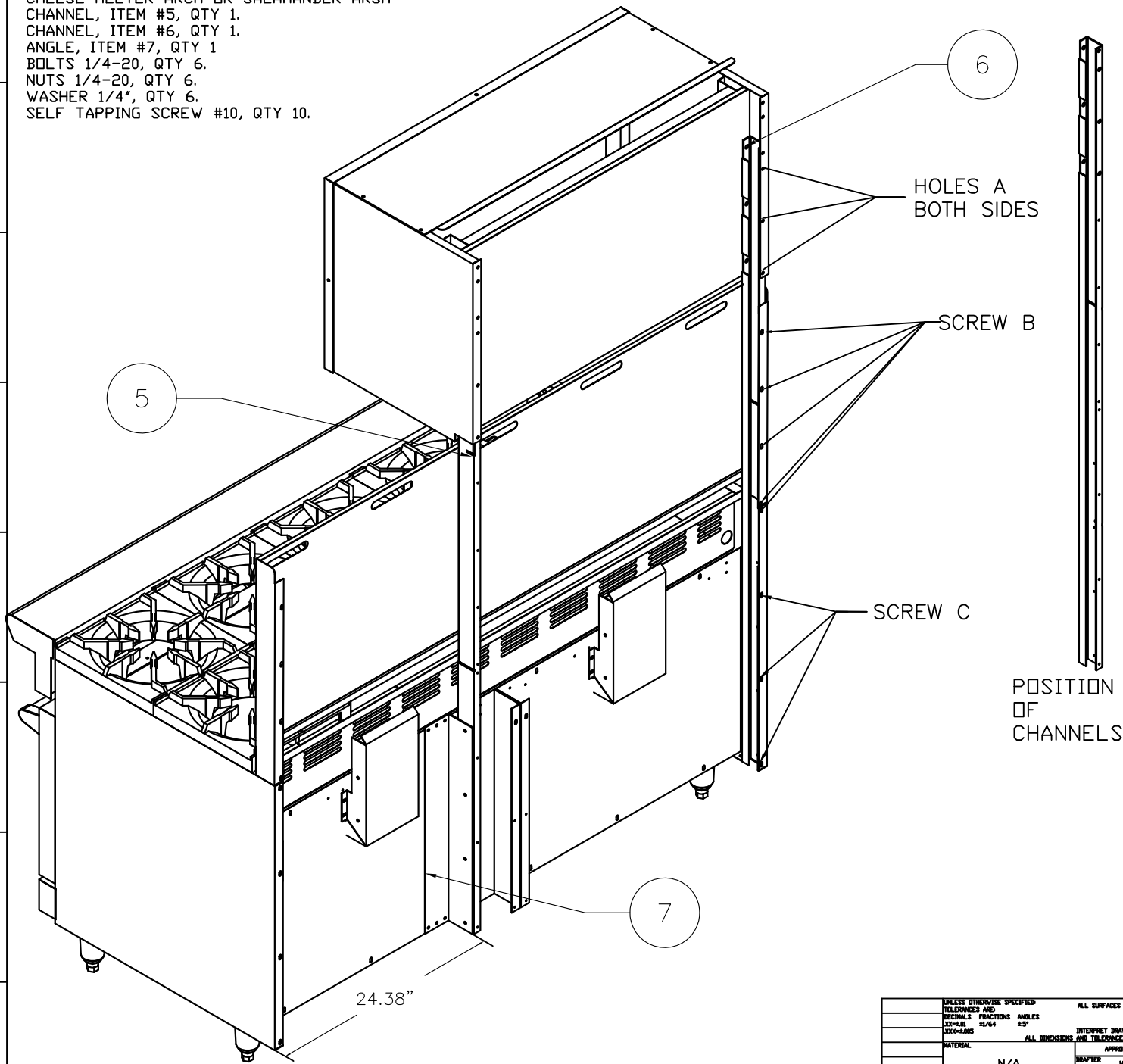
7. ALL SCREWS CAN BE REUSED.



UNLESS OTHERWISE SPECIFIED TOLERANCES ARE: DIMENSIONS IN INCHES DECIMALS FRACTIONS ANGLES 0.004-0.010 1/16 0.5° 0.000-0.005 ALL DIMENSIONS TO UNLESS OTHERWISE SPECIFIED		ALL SURFACES TO BE 1/8" OR SMOOTHER NO NET SCALE DRAWING DIMENSIONS ARE IN INCHES INTERPRET DRAWING FOR ASSEY 1/4-20-1/4" AND TOLERANCES APPLY TO FINISHED PART		AMERICAN RANGE CORP. 13592 DESMOND ST. PACOIMA, CA 91331 INSTRUCTION CHEESE MELTER OR SALAMANDER MOUNTING ON 60" OVEN	
MATERIAL	N/A	APPROVALS	DATE	SCALE	REF. NO.
DRAWN	N HUTCHINS	DRAWN	5-06-04	SCALE	REF. NO.
DRAWN CHECK	N HUTCHINS	DRAWN CHECK	5-06-04	SCALE	REF. NO.
USED ON	N/A	SCALE	N/A	PART NO.	REV.
				A70200	A
				SHEET	2 OF 3

PROVIDED ITEMS:

- CHEESE MELTER ARCM OR SALAMANDER ARSM
- CHANNEL, ITEM #5, QTY 1.
- CHANNEL, ITEM #6, QTY 1.
- ANGLE, ITEM #7, QTY 1
- BOLTS 1/4-20, QTY 6.
- NUTS 1/4-20, QTY 6.
- WASHER 1/4", QTY 6.
- SELF TAPPING SCREW #10, QTY 10.



REVISION HISTORY					
ZONE	REV	EDN	DESCRIPTION	DATE	APPROVED
-	A	-	RELEASED TO PRODUCTION	5-06-04	M HUTCHINS

NOTES:

A. MOUNTING ON LEFT SIDE

1. SLIDE CHANNEL (#6), IN PLACE OF PREVIOUS SHORTER CHANNEL. POSITION SO THAT CUTOUTS ARE ON TOP, AND HOLES ARE TOWARD BACK OF THE OVEN. THE 4 HOLES ON BOTTOM OF CHANNEL (#6) SHOULD BE ALIGNED WITH THE 4 HOLES ON THE SIDE PANEL. TIGHTEN THE CHANNEL WITH 3 SCREWS (C).

2. PLACE ANGLE (#7) AS SHOWN. USING ANGLE AS A TEMPLATE, SECURE WITH 6 #10 SELF-TAPPING SCREWS PROVIDED. SEE DIMENSION 24.38" FOR REFERENCE.

3. SECURE CHANNEL (#5) TO ANGLE (#7), BY ALIGNING THE 4 HOLES ON EACH OF THESE PARTS AND USING THE 4 SELF-TAPPING SCREWS TO TIGHTEN.

4. PLACE FRONT HIRISER ON THE CHANNELS (#4,#6). PLACE REAR HIRISER ON THE BACK OF FRONT HIRISER. SCREW WITH 10 SCREWS (B) AND TIGHTEN.

5. REAR HIRISER IS NOT SHOWN ON PAGE 2 IN ORDER TO SHOW PARTS THAT WOULD OTHERWISE BE COVERED.

6. SLIDE CHEESE MELTER OR SALAMANDER ONTO CHANNELS (#5,#6) AND TIGHTEN WITH BOLTS, 1/4-20 X1", WASHERS, AND NUTS, USING HOLES (A).

7. ALL SCREWS CAN BE REUSED.

UNLESS OTHERWISE SPECIFIED: TOLERANCES ARE: DECIMALS FRACTIONS ANGLES ±.000 ±.015 1/16 1/4 1/2 1/4		ALL SURFACES TO BE $\frac{1}{8}$ " OR SMOOTHER NO NET SCALE DRAWING DIMENSIONS ARE IN INCHES INTERPRET DRAWING PER ASME Y14.5M-1994 AND TOLERANCES APPLY TO FINISHED PART		AMERICAN RANGE CORP. 13592 DESMOND ST. PACOIMA, CA 91331 INSTRUCTION CHEESE MELTER OR SALAMANDER MOUNTING ON 60" OVEN	
MATERIAL	APPROVALS	DATE	SCALE	REF. NO.	PART NO.
N/A	DRAWER M HUTCHINS	5-06-04	A	*	A70200
FINISH	DRWY CHECK M HUTCHINS	5-06-04	SCALE	N/A	SHEET
N/A	USED ON				3 OF 3