

# PASTA COOKER | GAS

**AURORA**



**ARCOBALENO®**  
PASTA EQUIPMENT

## APCG35/35D

ONE or TWO-TANK  
ECO-FRIENDLY PASTA COOKER



### STANDARD FEATURES

- Versatile pasta cooker; cook fresh, dry & frozen pastas plus... noodles, vegetables and more
- 11 gallon for APCG35, 11 + 11 gallon for APCG35D
- 316 stainless steel cooking tank - corrosion resistant, marine grade
- Rounded corners, rear backsplash, and stainless steel construction - sanitary finish
- Large diameter starch skimmer drain
- Continuous water fill, overflow safety drain, and floor drain
- Variable burner temperature
- Independent tank operations on double tank unit (gas, water, drain)
- Equipped with gas regulator, Piezoelectric ignition, pilot light and thermocouple safety valves
- Height adjustable legs - counter height 35" to 37"
- Equipped for Natural Gas installation
- Liquid Propane (LP) is available upon request at time of order
- Factory and on-location training. The Only Full-Service Pasta Machine Manufacturer in North America!



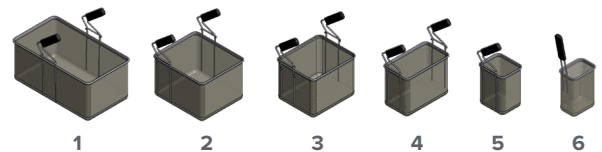
### OPTIONAL FEATURES & ACCESSORIES

- Variety of pasta basket options - pasta baskets sold separately
- Robotic basket lift with adjustable digital timers (APCL35)
- Casters, user responsible for installation, set of 4 with 2 locking
- Casters, factory installed, set of 4 with 2 locking
- Custom door and panel colors

Please refer to [www.ralcolor.com](http://www.ralcolor.com) for custom color choices.



#### Pasta Basket Options



#### Pasta Basket Combinations



Basket #	1	2	3	4	5	6
Capacity* (lbs)	14-15 lbs	8-9 lbs	6-7 lbs	3-4 lbs	1-2 lbs	0.75-1 lb
Capacity* (oz)	224-240 oz	128-144 oz	96-112 oz	48-64 oz	16-32 oz	12-16 oz
Capacity* (g)	6,350-6,804 g	3,629-4,082 g	2,722-3,175 g	1,361-1,814 g	454-907 g	340-454 g

\*For short pastas, capacity varies by shape

#### WARRANTY

**One Year:** For more information visit [arcobalenollc.com/warranty.html](http://arcobalenollc.com/warranty.html)



#### TRY BEFORE YOU BUY

In an effort to ensure success, we maintain a test kitchen where you can have your very own recipe tested for quality! Call for details.



# PASTA COOKER | GAS

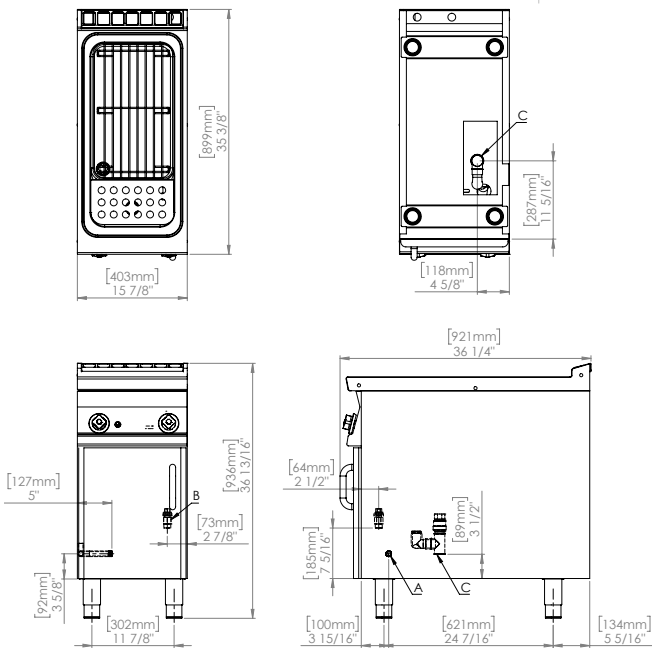


## APCG35/35D TECHNICAL SPECIFICATIONS

<b>Model</b>	APCG35	APCG35D
<b>Tank(s)</b>	1	2
<b>Tank Volume</b>	11 gallon	11 + 11 gallon
<b>Tank Dimensions</b>	12"W x 20"D x 12.75"H	(2x) 12"W x 20"D x 12.75"H
<b>Natural Gas/LP Connection</b>	3/4" NPTF (Qty: 1)	3/4" NPTF (Qty: 1)
<b>Natural Gas/LP Pressure</b>	7" WC max NG / 11" WC max LP	7" WC max NG / 11" WC max LP
<b>Total Power</b>	47,600 BTU/h	95,200 BTU/h (47,600 BTU per tank)
<b>Water Connection</b>	3/4" NPTM (Qty: 1)	3/4" NPTM (Qty: 2)
<b>Water Pressure</b>	14.5 - 72.5 psi	14.5 - 72.5 psi
<b>Water Draining</b>	1" NPT (Qty: 1)	1" NPT (Qty: 2)
<b>Machine Dimensions</b>	15.75"W x 36.25"D x 36"H	31.50"W x 36.25"D x 36"H
<b>Shipping Dimensions</b>	17"W x 38"D x 43"H	33"W x 38"D x 43"H
<b>Machine Weight</b>	143 lbs	241 lbs
<b>Shipping Weight</b>	164 lbs	285 lbs
<b>Shipping Class</b>	92.5	92.5

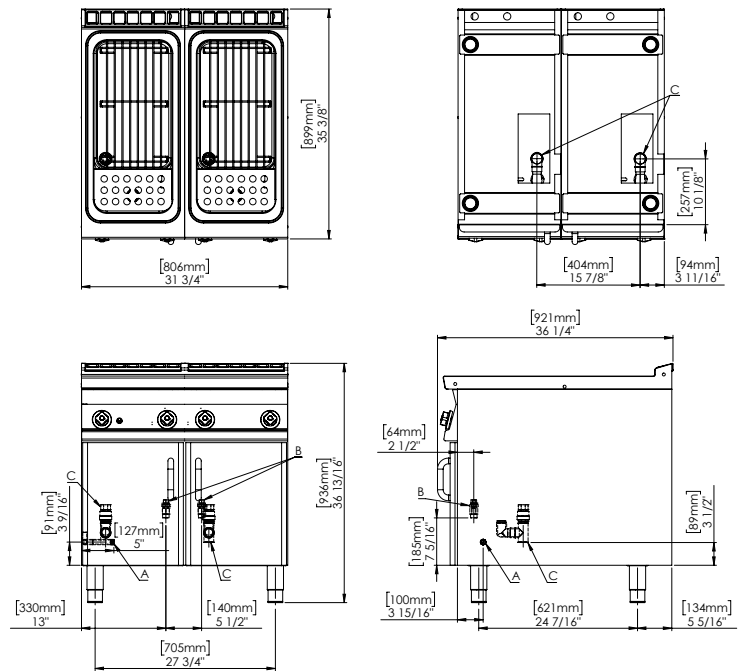
### APCG35

NOTES:  
A- GAS INLET, 3/4" NPT  
B- WATER INLET, 3/4" NPT  
C- WATER DRAIN, 1" NPT



### APCG35D

NOTES:  
A- GAS INLET, 3/4" NPT  
B- WATER INLET, 3/4" NPT  
C- WATER DRAIN, 1" NPT



CAD file available on KCL or contact factory 717-394-1402. | Specifications subject to change without notice | © Copyright 2024 Arcobaleno® Pasta Machines, LLC