



OPTIONAL AUTO-FILL ASSEMBLY FOR ELECTRIC HOT FOOD TABLES MODEL # SU-90

(Available only on sealed Well Units: SW, HDSW, DISW, DISLSW Series)

FEATURES:

Auto-Fill Sensor (Water sensor installed in one basin but will control water levels in all wells).

Quarter-Turn Valve and Drain Outlet supplied with 3/4" NPT Male Connection.

Basin Overflow Drain with continuous drainage.

Water Supply Inlet supplied with 1/2" NPS Connection.

NOTE: Recommended Shut-Off Valve for water supply (By Others).

MATERIALS:

1/2" & 3/4" Copper Pipe

Lead Free Brass Quarter-Turn Ball Valve

Auto-Fill Sensor: 120V/10W

Controlboard: 110VAC

FACTORY INSTALLED ONLY

Item #: _____	Qty #: _____
Model #: _____	
Project #: _____	



Water will continue to fill until it reaches the Auto-Fill Sensor

IMPORTANT NOTE:

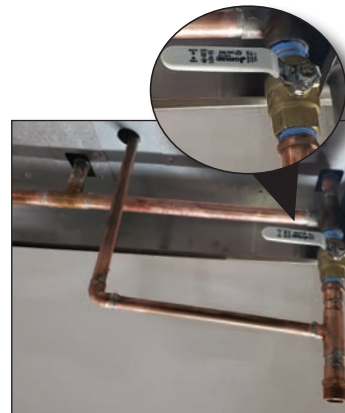
A **Manifold Drain (-M)** Option is required in order for the Auto-Fill to correctly function.
(Included on HDSW Series and not required for DISW-1 Series)



Illuminated On/Off Button



Basin Sensor Activates When Water Falls Below 2" Level



Overflow & Drain Assembly With Quarter-Turn Drain Valve

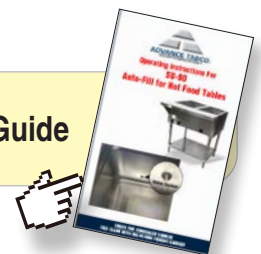


Supplied 1/2" NPS Water Inlet



**Save Time & Money.
Protect Your Equipment
While Providing Efficiency
& Constant Water Level!**

Click Here for SU-90 Operation Guide



Customer Service Available To Assist You 1-800-645-3166 8:30 am - 7:00 pm E.S.T.

For Orders & Customer Service:
Email: customer@advancetabco.com or Fax: 631-242-6900

For Smart Fabrication™ Quotes:
Email: smartfab@advancetabco.com or Fax: 631-586-2933