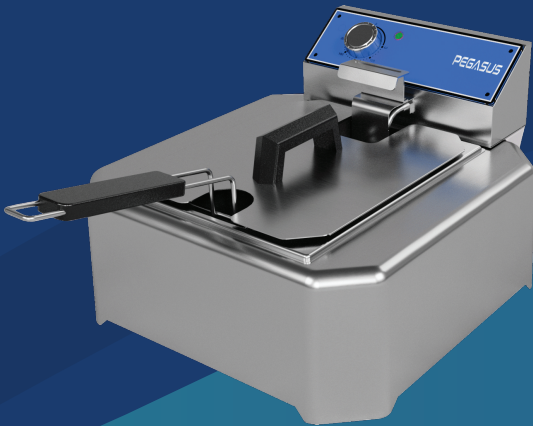
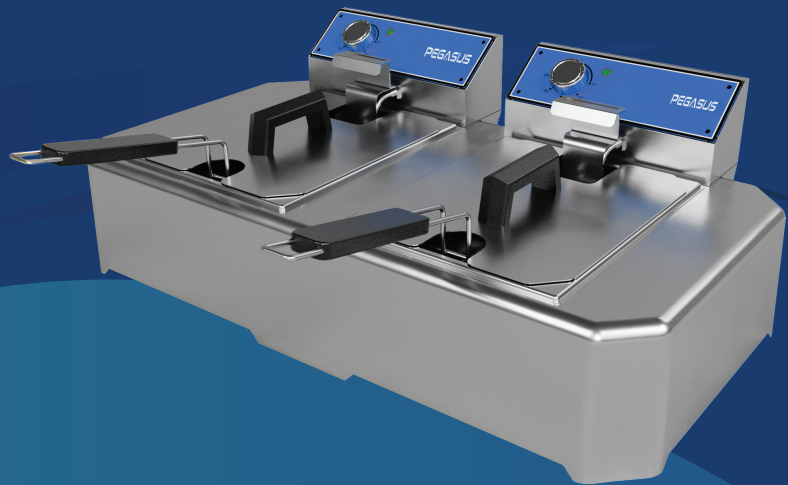


## ELECTRIC COUNTERTOP FRYERS



FRC-10E



FRC-20E



- The Pegasus Electric Countertop Fryers are reliable and versatile solutions designed for professional frying applications.
- Stainless steel construction, ensures durability and easy cleaning.
- Stainless steel drawn frypot with stainless steel baskets included.

### FEATURES

- Electric fryer with thermostatic temperature control.
- 10 lbs, and 20 lbs frypot capacities.
- 208V / 1 Phase.
- Lift up heating element for easy cleaning.
- Safe oil drainage from the bottom via valve.
- Safety thermostat for overheat protection.
- One-year limited parts & labor warranty (USA & Canada only).

## ELECTRIC COUNTERTOP FRYERS

### TECHNICAL SPECIFICATIONS:

Model	Power	Voltage	Phase	Nominal Amps 208V - 1P	Dimensions (W x H x D)	Shipping Weight
FRC-10E	3.75 kW	208V	1P	18	15.9" x 17.2" x 10.2"	16 lb
FRC-20E	7.5 kW	208V	1P	36	31.2" x 17.2" x 10.4"	21 lb

### REQUIRED CLEARANCES:

	Non-Combustible	Combustible Construction
Left	0" (00 mm)	1" (25 mm)
Right	0" (00 mm)	3" (76 mm)
Back	2" (51 mm)	3" (76 mm)



Galaxy Group reserves the right to modify specifications or discontinue models without incurring obligation. Dimensions are nominal.