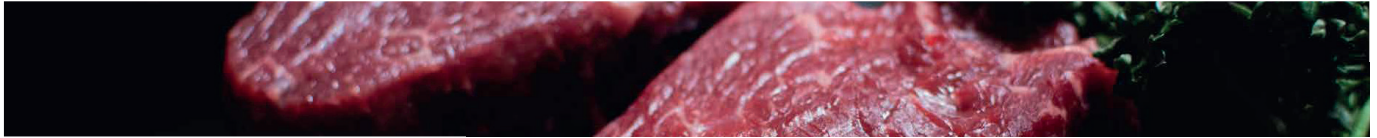




YOU CAN TRUST

MEAT AND BONE SAWS

SKEX



STANDARD FEATURES

SKYFOOD Meat and Bone Saw SKEX is ideal for small to medium butcher shops, grocery stores and other meat processing operations. This floor model unit features a 99" long blade with 4 teeth per inch and 1 hp motor. Constructed of steel with enamel paint finish and stainless steel food zones. Comes standard with a sliding feeding table and a thickness gauge plate to ensure precise cuts.

Includes an easily removable large lower scrap pan to catch bone dust to maintain the area clean. Upper and lower doors and wheels, sliding and stationary tables are easily removable to facilitate cleaning at the end of the day.

Safety Features Include:

- Blade Guide Guard above the cutting zone.
- Emergency Button easily accessible.
- Reset Button prevents the machine from turning back on automatically after a power shortage.
- Upper and Lower Doors equipped with a safety switch that will stop motor when opened.
- Column Blade Guard equipped with a safety switch that will stop motor when removed.
- Motor equipped with an overload protection switch to prevent it from overheating
- ETL Listed and ETL Sanitation Listed (Conforms to NSF 8, UL 763 and CSA Std. C22.2 No. 195) Standards



SKEX
MEAT AND BONE SAW



Extra blades available for purchase:

SB99584TPI
Hard Saw Blade 99" Long 5/8"
Wide 4T per Inch

ILLUSTRATIVE PHOTO, ACTUAL PRODUCTS AND ACCESSORIES ARE SUBJECT TO CHANGE WITHOUT NOTICE.



Skyfood Equipment LLC
175 SW 7th Street, Ste 2416
Miami, FL 33130

Toll Free:
1-800-503-7534
sales@skyfood.us

www.skyfood.us



Follow us to keep up to date with the latest news and offers

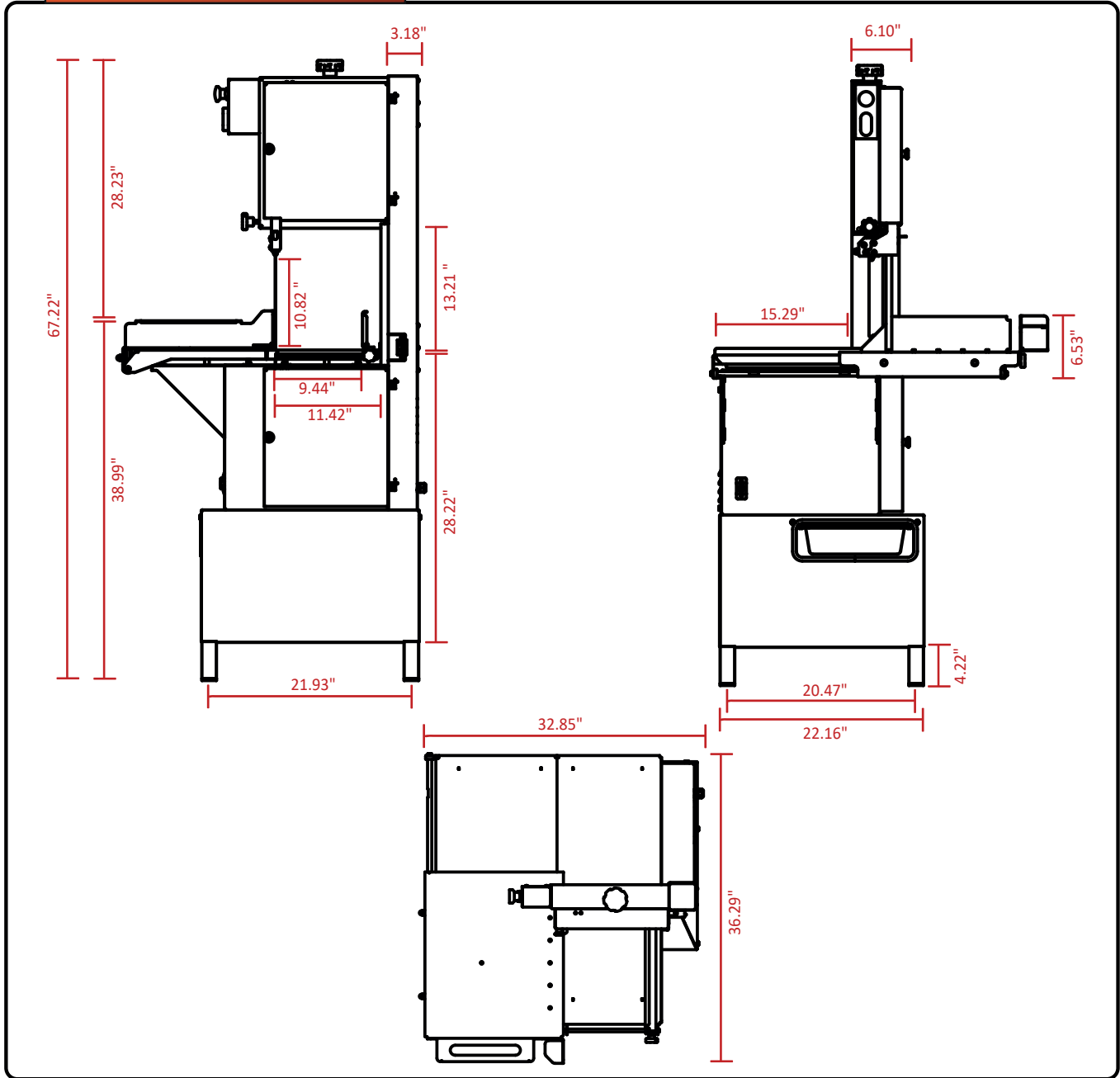
/SkyfoodEquipment

/SkyfoodEquipment

/SkyfoodEquipment



DIMENSIONS



WARRANTY 01 YEAR PARTS AND LABOR VALID IN THE CONTINENTAL UNITED STATES.



PLUG
NEMA 5-20P



MADE IN BRAZIL

Item	Voltage	Power Rating	Amps	Blade (L x W)	Dimensions (W x D x H)	Weight (Net x Ship)	Cutting Area (W x H)	PLUG
SKEX	115 V	1 HP / 730 W	14	99" x 5/8"	32.85" x 36.29" x 67.22"	229 lb x 332 lb	9.44" x 10.88"	NEMA 5-20P



Skyfood Equipment LLC
175 SW 7th Street, Ste 2416
Miami, FL 33130

Toll Free:
1-800-503-7534
sales@skyfood.us

www.skyfood.us

