



MODULAR HOT TOP RANGE

TITAN MODULAR HOT TOP RANGE



JMRH-2HT-A
(shown without legs)

MODEL NO.	DESCRIPTION
<input type="checkbox"/> JMRH-1HT-A	12" ONE HOT TOP SECTION
<input type="checkbox"/> JMRH-1HT	18" ONE HOT TOP SECTION
<input type="checkbox"/> JMRH-2HT-A	24" TWO HOT TOP SECTIONS
<input type="checkbox"/> JMRH-2HT	36" TWO HOT TOP SECTIONS
<input type="checkbox"/> JMRH-3HT	36" THREE HOT TOP SECTIONS
<input type="checkbox"/> JMRH-4HT	48" FOUR HOT TOP SECTIONS
<input type="checkbox"/> JMRH-5HT	60" FIVE HOT TOP SECTIONS
<input type="checkbox"/> JMRH-6HT	72" SIX HOT TOP SECTIONS

STANDARD FEATURES

- Highly polished reinforced cast iron plates
- One 35,000 BTU/hr burner per section
- Variable size multi-point gas connection—see utility information for details
- 14 gauge all welded body construction
- Stainless steel gas tubing throughout
- Stainless steel front, sides and stub back
- Stainless steel 6" plate shelf
- 3/4" gas regulator (shipped loose, must be installed for proper operation)

AVAILABLE OPTIONS

- Stainless steel high riser
- Stainless steel double high riser
- Stainless steel high shelf
- Stainless steel double high shelf
- Stainless steel tubular high shelf
- Stainless steel tubular double high shelf
- Common plate shelf with Item(s) Model(s) _____
- Cap and cover manifold. Left Right
- Floor length legs

ACCESSORIES

- 6" casters, front two locking (5" diameter wheel)
- 36" flex hose with quick disconnect (3/4" connection)
- 48" flex hose with quick disconnect (3/4" connection)
- 1" gas pressure regulator (specify gas type)
- 1-1/4" gas pressure regulator (specify gas type)



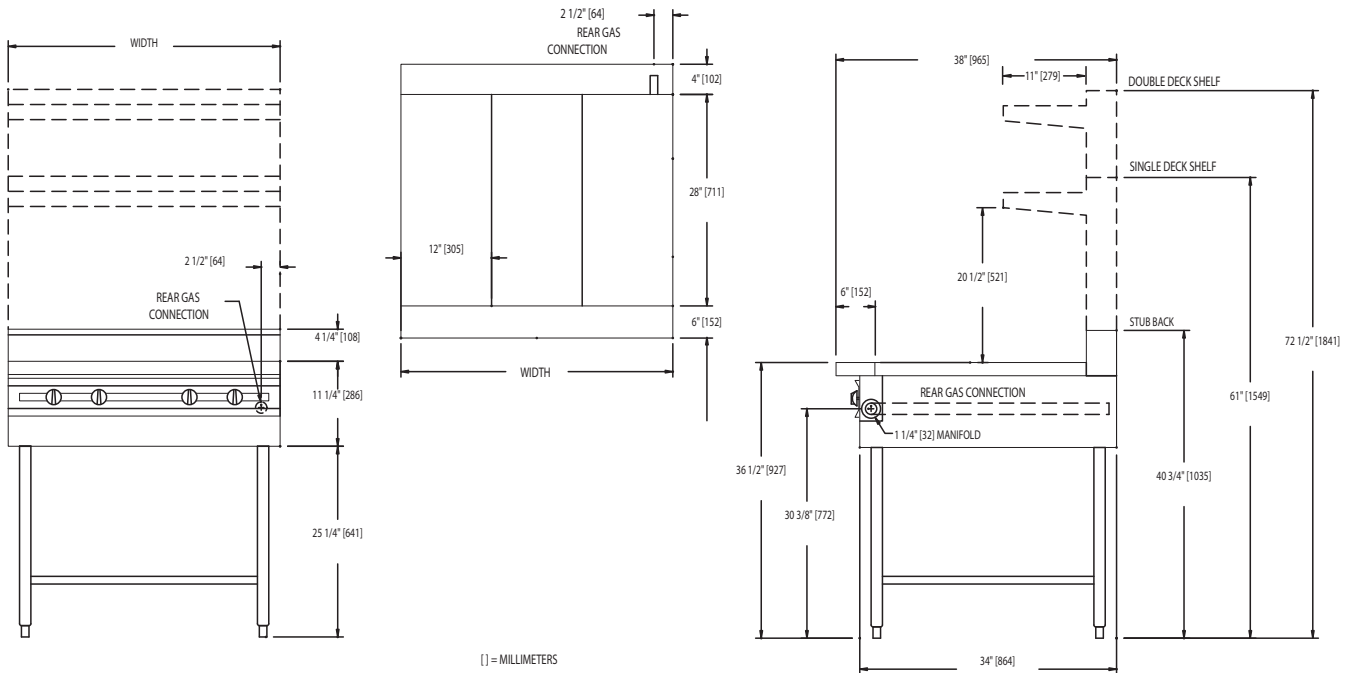
WWW.JADERANGE.COM

JADE RANGE, LLC., A MIDDLEBY COMPANY • 2650 Orbiter Street • Brea, CA 92821 • PHONE: 800-884-5233 FAX: 714-961-2550
Note: In line with their policy to continually improve products, Jade reserves the right to change materials and specifications without notice. PRINTED IN USA





MODULAR HOT TOP RANGE



MODEL	BTUS	WIDTH	DEPTH	HEIGHT	APPX. SHP. WT.
JMRH-1HT-A	35,000	12"	38"	SEE DRAWING	130 LBS.
JMRH-1HT	35,000	18"	38"	SEE DRAWING	210 LBS.
JMRH-2HT-A	70,000	24"	38"	SEE DRAWING	205 LBS.
JMRH-2HT	70,000	36"	38"	SEE DRAWING	400 LBS.
JMRH-3HT	105,000	36"	38"	SEE DRAWING	410 LBS.
JMRH-4HT	140,000	48"	38"	SEE DRAWING	540 LBS.
JMRH-5HT	175,000	60"	38"	SEE DRAWING	615 LBS.
JMRH-6HT	210,000	72"	38"	SEE DRAWING	690 LBS.

DESCRIPTION:

Heavy duty modular hot top range. To be model # JMRH _____ manufactured by Jade Range. Top sections to consist of highly polished reinforced cast iron plates. Provide with 35,000 BTU/hr. per burner section, controlled by infinite gas valves. To have 14 gauge all welded body with stainless steel front and sides. All gas tubing to be stainless steel throughout. To have 6" stainless steel adjustable legs.

SPECIFY TYPE OF GAS WHEN ORDERING.

SPECIFY ALTITUDE WHEN ABOVE 2,000 ft.

UTILITY INFORMATION (GAS):

- Ranges are supplied with 1-1/4" front manifold connection and a 1" or 3/4" capped rear manifold connection. For rear manifold connection, remove cap. Ranges are supplied with 3/4" gas pressure regulator. For 1-1/4" or 1" gas pressure regulator, see accessories. (Specify required front manifold cap and cover when ordering.)
- Required operating pressure:
 Natural Gas 5" W.C. minimum
 Propane Gas 10" W.C. minimum
 14" W.C. maximum

Note: This unit must be connected with the gas appliance regulator supplied.



WWW.JADERANGE.COM

JADE RANGE, LLC., A MIDDLEBY COMPANY • 2650 Orbiter Street • Brea, CA 92821 • PHONE: 800-884-5233 FAX: 714-961-2550
 Note: In line with their policy to continually improve products, Jade reserves the right to change materials and specifications without notice. PRINTED IN USA