

High capacity,  
small  
footprint

MCC Hot self serve  
3 levels



## The Modular Convenience Counters offer you the best, in every aspect



Highest capacity on a small footprint: Up to 30%\* more display surface



Up to 75%\* more product visibility due to transparent sides and top



Maximum food safety, extended shelf life and less waste



Unlimited possibilities and combinations with other MCC models



Low total cost of ownership & environmental friendly green technologies

\*Compared to competition according to global ISO standards - TDA ISO 23953

### MCC Hot self serve open display

- 3 level heated self serve open display cabinet
- Designed for packaged products
- 24, 36 or 48 inches wide
- Unlimited possibilities in combining hot and cold side-by-side
- Available as solid back or pass-through model (for backloading, with soft closing sliding glass doors on the operator side)
- Can be part of an island setup with other MCC SS units.
- Available as floor model or as drop-in adaptable to any store design
- Ready to plug in for quick and easy installation
- Underframe floor model available in any RAL colour
- Slim shelves with adjustable angle
- LED lighting with natural colour reproduction on each shelf
- Patented Hot Blanket holding technology keeps products at  $\geq 150^{\circ}\text{F}$
- Energy saving hot airflow recirculation technology
- Thermo pane glass - increased insulation
- Point-of-sales price strips included
- Total presentation area:
  - MCC 24-3: 7.8 ft<sup>2</sup>
  - MCC 36-3: 12.4 ft<sup>2</sup>
  - MCC 48-3: 17.0 ft<sup>2</sup>
- Also available as:
  - MCC Hot full serve humidified
  - MCC Hot self serve humidified with doors on customer side



Three presentation levels



Hot Blanket holding technology



Optimal visibility

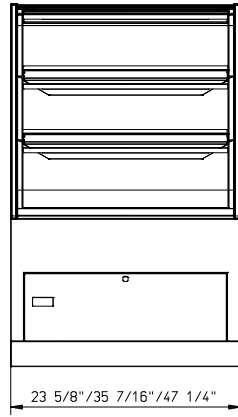
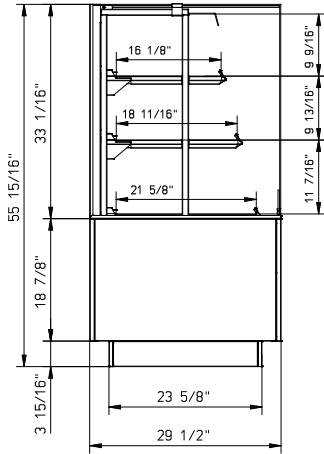


Floor model or drop-in version

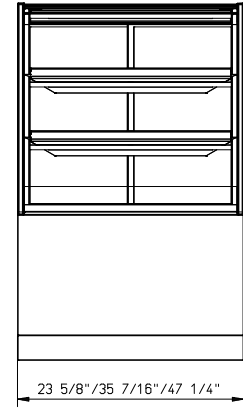
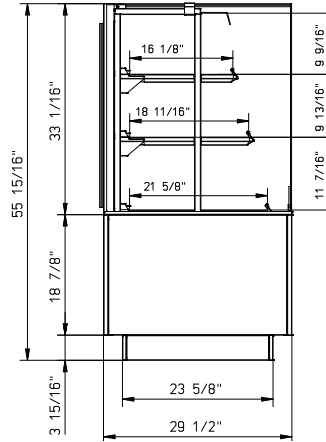
	MCC 24-3 Hot SS	MCC 36-3 Hot SS	MCC 48-3 Hot SS
Width	23 5/8"	35 7/16"	47 1/4"
Depth	29 1/2"	29 1/2"	29 1/2"
Height on stand	55 7/8"	55 7/8"	55 7/8"
Height drop-in	33 1/16"	33 1/16"	33 1/16"
Voltage	1~ 208 V	1~ 208 V	3~ 208 V
Frequency	50/60 Hz	50/60 Hz	50/60 Hz
Power	2.1 kW	3.01 kW	4.01 kW

## MCC Hot SS on stand

### Solid back

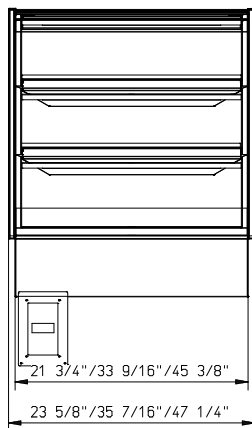
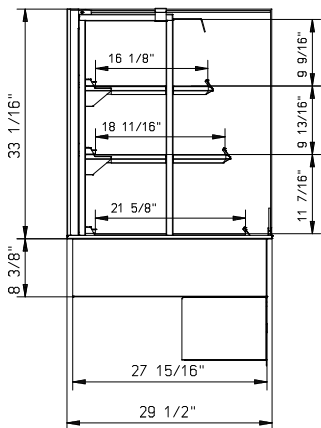


### Pass-through

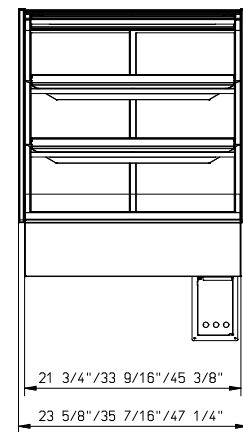
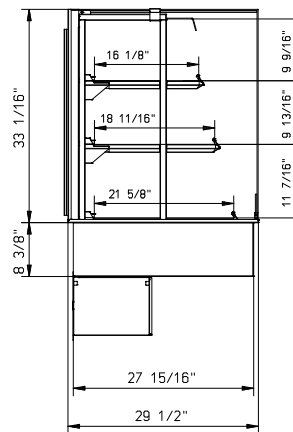


## MCC Hot SS drop-in

### Solid back



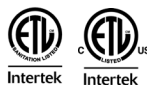
### Pass-through



Specifications and technical data are subject to amendment without notice.

These are basic drawings. For more detailed technical information, please refer to the installation manual at [www.frijado.com](http://www.frijado.com).

The MCC Hot SS is ETL listed (meets UL standard 197, NSF standard 4 and CSA standard C22.2 no. 109).



Fri-Jado Inc.  
1401 Davey Road  
Suite 100  
Woodridge IL 60517  
Toll free 877-374-5236  
e-mail [us.info@frijado.com](mailto:us.info@frijado.com)  
[www.frijado.com](http://www.frijado.com)