



YOU CAN TRUST

# CHARCOAL BARBECUE GRILLS

## CH-26TEPRM - CH-38TEPRM



**CH-26TEPRM**  
Gas Barbecue Grill  
26 Skewers

**CH-38TEPRM**  
Gas Barbecue Grill  
38 Skewers

### STANDARD FEATURES

Unlock the secret to effortless barbecue flavor with the Tomasi Gas Barbecue Grill. Our powerful infrared burners provide consistent, high heat, ensuring perfectly cooked and delicious results every time. Enjoy the authentic taste of a Brazilian barbecue without the hassle of smoke. Experience the quality and reliability of a Tomasi Gas Barbecue Grill and elevate your grilling game.

Construction: AISI 430 brushed stainless steel.

Burners: Each infrared burner generates a heat output of 8932 BTUs (2250 Kcal) and consumes 0.55 lb of fuel per hour.

Gas Pressure: The required gas pressure varies depending on the type of gas used. Natural gas: 2.00 Kpa / 200 MMCA. Propane gas: 2.80 Kpa / 280 MMCA.

Gas inlet: Natural gas: 1". Propane gas: 3/4".

Gas Valves: Each gas valve controls two burners, allowing for some level of zonal cooking or heat control.

Insulation: Rock wool thermal insulation. It effectively traps heat inside the grill, leading to more efficient cooking and potentially faster preheating times and it prevents the exterior surfaces from becoming excessively hot.

Motor: Equipped with a 1/4 HP geared motor for an effortless skewer rotation.

Speed reducer: A 1:50 speed reducer reduces the motor's output speed by a factor of 50. This results in a slower, more controlled rotation suitable for evenly grilling food.



**Skyfood Equipment LLC**  
175 SW 7th Street, Ste 2416  
Miami, FL 33130

**Toll Free:**  
1-800-503-7534  
sales@skyfood.us

[www.skyfood.us](http://www.skyfood.us)



Follow us to keep up to date with the latest news and offers

/SkyfoodEquipment

/SkyfoodEquipment

/SkyfoodEquipment

ILLUSTRATIVE PHOTO, ACTUAL PRODUCTS AND ACCESSORIES ARE SUBJECT TO CHANGE WITHOUT NOTICE.



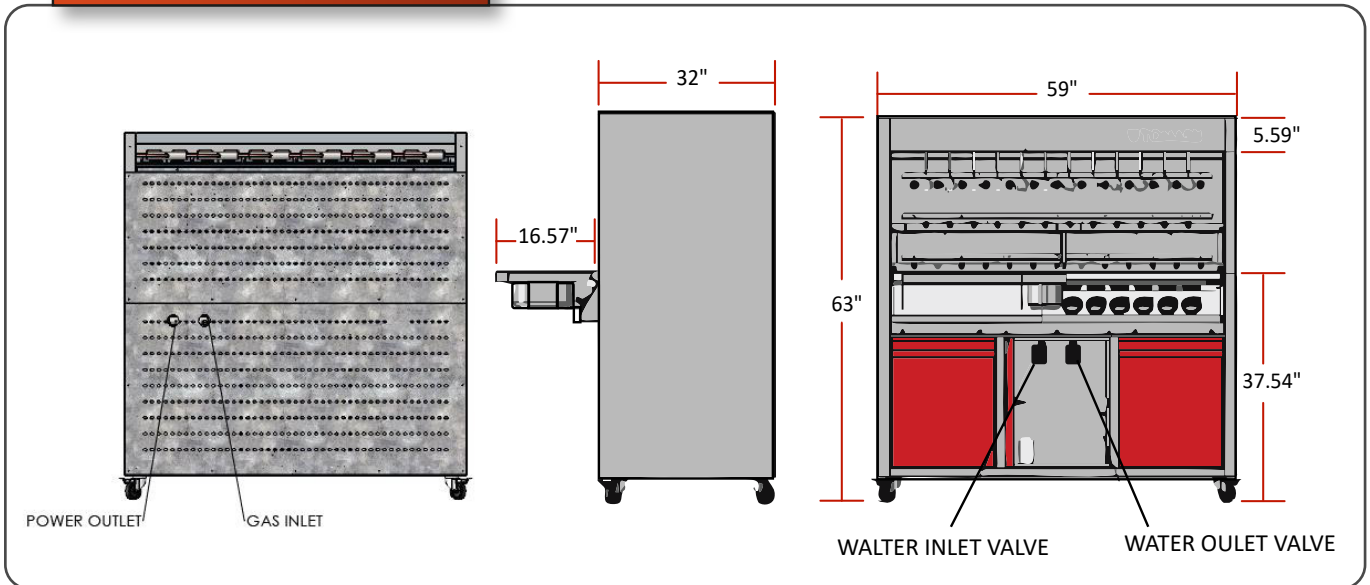
YOU CAN TRUST

## GAS BARBECUE GRILLS

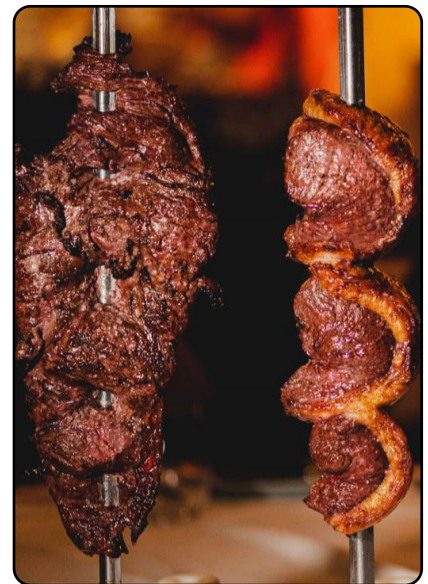
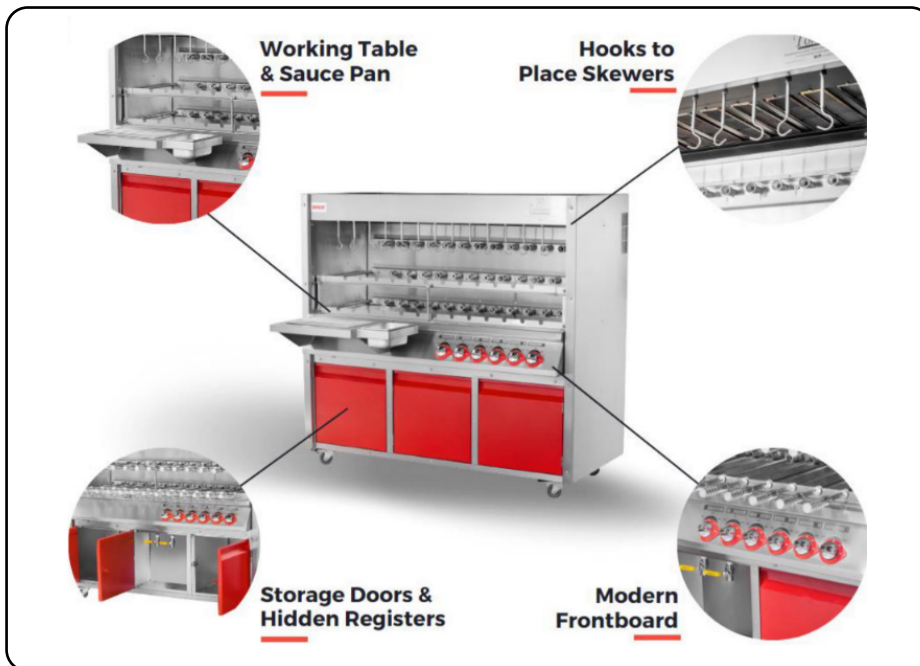
CH-26TEPRM - CH-38TEPRM



### DIMENSIONS



### 5" CASTERS FOR EASY MAINTENANCE AND DISPLACEMENT OF THE GRILL



 **MADE IN BRAZIL**

**WARRANTY 01 YEAR PARTS AND LABOR VALID IN THE CONTINENTAL UNITED STATES.**



| Item       | Electrical  | Quantity of Skewers | Grill Dimensions (LxWxH) | Rotative Levels | Quantity of Burners* | BTUs*   | Gas Consumption* | Net Weight | Gross Weight | PLUG       |
|------------|-------------|---------------------|--------------------------|-----------------|----------------------|---------|------------------|------------|--------------|------------|
| CH-26TEPRM | 127V / 60HZ | 26                  | 43 x 32 x 63 in          | 3               | 10                   | 89.320  | 5.51 lbs/hr      | 570 lbs    | 658 lbs      | NEMA 5-15P |
| CH-38TEPRM | 127V / 60HZ | 38                  | 59 x 32 x 63 in          | 3               | 12                   | 107.184 | 6.61 lbs/hr      | 751 lbs    | 840 lbs      | NEMA 5-15P |




**Skyfood Equipment LLC**  
175 SW 7th Street, Ste 2416  
Miami, FL 33130

**Toll Free:**  
1-800-503-7534  
sales@skyfood.us

[www.skyfood.us](http://www.skyfood.us)



Follow us to keep up to date with the latest news and offers

 /SkyfoodEquipment

 /SkyfoodEquipment

 /SkyfoodEquipment

ILLUSTRATIVE PHOTO, ACTUAL PRODUCTS AND ACCESSORIES ARE SUBJECT TO CHANGE WITHOUT NOTICE.