



Grease Trap with 50 lbs. capacity

TEM: 48140

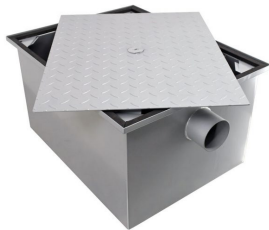


Prevent grease from entering into plumbing system, septic fields, and wastewater facilities.

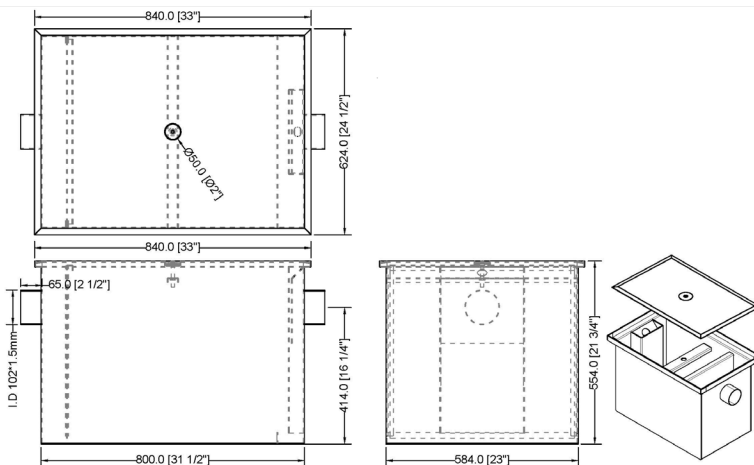
These grease traps are built to last; made from 11-gauge cold rolled steel with an oven-cured and acid-resistant baked gray epoxy coating. Ideal use for cooking or prep sinks, pot sinks, or commercial dishwashers in various types of commercial food service operations. It may be recess-mounted or floor-mounted.

FEATURES:

- 11-gauge cold rolled steel with an oven-cured and acid-resistant baked gray epoxy coating
- 25 GPM flow rate
- 50 lb. grease capacity
- threaded inlet & outlet



TECHNICAL DRAWING



TECHNICAL SPECIFICATION

Item	48140
Grease Capacity	50 lb. (23 kg.)
Flow Rate (Gallons per Min.)	25Gal/min (94.6 L/min)
Inlet & Outlet Size	4"
Net Weight	173.8lb (79kg)
Net Dimensions (WDH)	33" x 24.5" x 21.75" (838 x 622 x 552.5 mm)
Gross Weight	178.2lb (81kg)
Gross Dimensions (WDH)	33.9" x 25.4" x 22.6" (860 x 645 x 575 mm)

