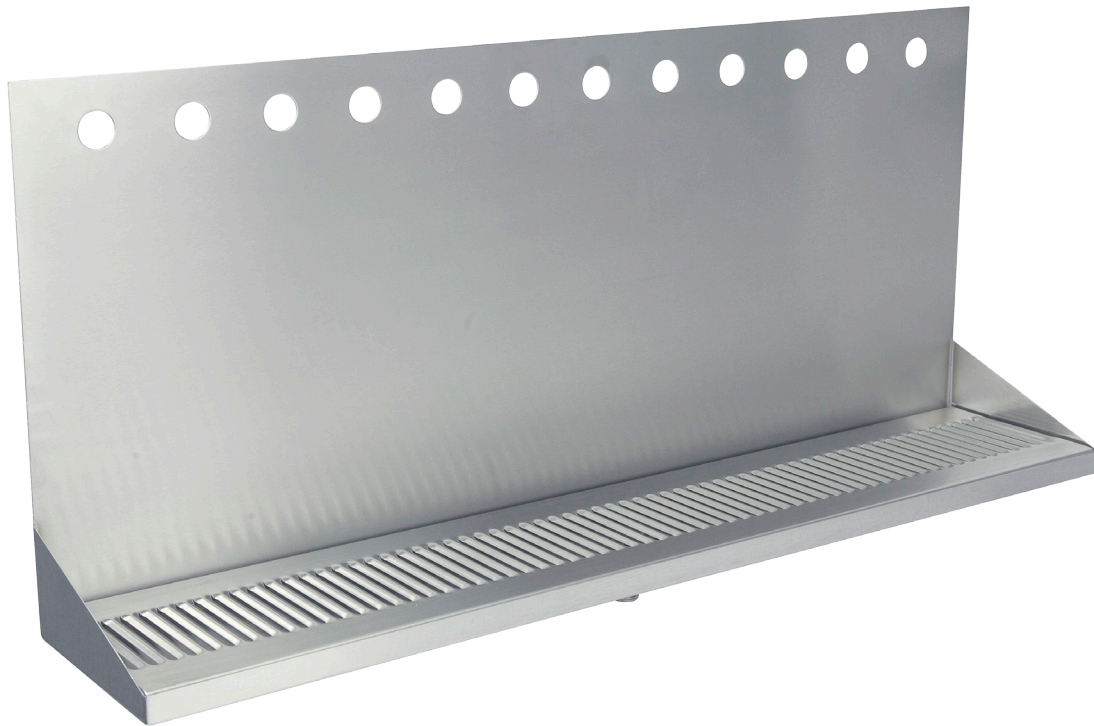




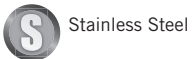
DRIP TRAY

WALL MOUNT SERIES – 12 HOLE

- Easy installation: beverage shanks mount through and secure tray to wall.
- Robust 18 gauge stainless steel construction.
- Welded corners, finished smooth for safety and appearance.
- Fast draining, precision louvered screen.



DP-332ELD-12-3



Part No.	Faucets	Finish	Shipping Weight	Box Dimensions
DP-332ELD-12-3	12	Brushed Stainless Steel	TBD	TBD

Dimensions

