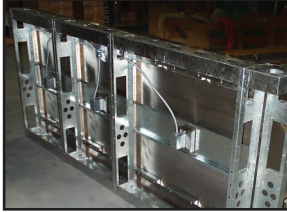


Modular Bar Die System

Installation Guidelines

INSTALLATION INSTRUCTIONS:

Step 1: Uncrate & Set Into Place



Step 2: Bolt Together w/ Self-Tapping Screws



Step 3: Level System w/ Shims



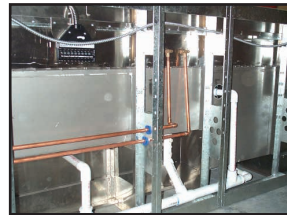
Step 4: Secure System To Floor



Step 5: Silicone Seams



Step 6: Install Plumbing, Electrical & Soda Lines



Assembled And Divided Into Sections For Shipment • Arrive To Job Site Ready For Installation

MILLWORK* ASSEMBLY SUGGESTIONS:

- Millwork pieces can be pre-fabricated and installed after bar die installation is completed.
- Millwork can be applied directly to the bar structure or clips, that slide onto a horizontal anchor, can be attached to the front panel.
- Outside panels (located in a channel under the top of the bar) slide out.
- Milled panels attached at the bottom using clips on the provided vertical hat channels, leaving easy access to plumbing.

*Millwork to be supplied by others.

Bar Top And Drink Rail Can Be Fabricated From Equipment Drawings Ahead Of Time.

