



Profit from the Eagle Advantage®

# Specification Sheet

## Short Form Specifications

Eagle Hand Sink, model HSA-10-FTWS. Constructed of type 304 stainless steel all-welded with deep-drawn positive drain sink bowl, basket drain, inverted "V" edge to prevent spillage, tubular mounting brackets, and splash mounted gooseneck faucet.



#HSA-10-FTWS

## Options / Accessories

- P-trap
- Tail piece
- End splashes
- Side mount wall bracket
- Soap & towel dispenser
- MICROGARD® antimicrobial protection

## EAGLE GROUP

100 Industrial Boulevard, Clayton, DE 19938-8903 USA  
 Phone: 302-653-3000 • 800-441-8440 • Fax: 302-653-2065  
[www.eaglegrp.com](http://www.eaglegrp.com)  
[www.eaglegrpnews.com](http://www.eaglegrpnews.com)  
[www.eaglemhc.com](http://www.eaglemhc.com)

For custom configuration or fabrication needs, contact our **SpecFAB® Division**.  
 Phone: 302-653-3000 • Fax: 302-653-2065 • e-mail: [quotes@eaglegrp.com](mailto:quotes@eaglegrp.com)

Item No.:	_____
Project No.:	_____
S.I.S. No.:	_____

# Hand Sink\* with Tubular Wall Support

## MODEL:

- HSA-10-FTWS

## Design & Construction Features

- Type 304 stainless steel construction.
- Inverted "V" edge rim retards spillage.
- All-welded construction.
- Positive drain bowl.
- One-piece, deep-drawn, seamless bowl.
- 1" (25mm)-diameter tubular wall brackets included for added strength.
- Includes 1½" (38mm) NPS stainless steel basket drain and splash mounted gooseneck faucet.
- Water inlet: ½" (13mm) NPS.

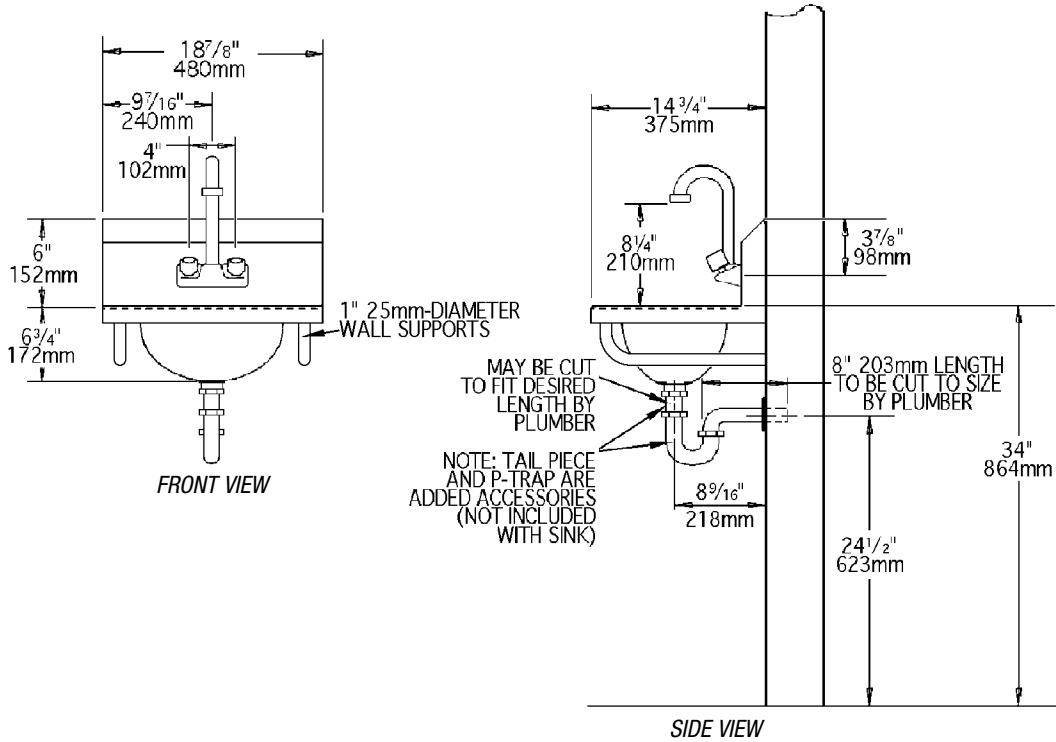
\* Non-electric. We offer sinks with electric soap dispenser and faucets.

Certifications / Approvals



Item No.: \_\_\_\_\_  
 Project No.: \_\_\_\_\_  
 S.I.S. No.: \_\_\_\_\_

# Hand Sink with Tubular Wall Support



model #	bowl size		overall size		weight			
	width	length x depth	width x length x height	in.	mm	lbs.	kg	
HSA-10-FTWS	9 <sup>3</sup> / <sub>4</sub> "	13 <sup>1</sup> / <sub>2</sub> " x 6 <sup>3</sup> / <sub>4</sub> "	248 x 343 x 173	14 <sup>3</sup> / <sub>4</sub> "	18 <sup>7</sup> / <sub>8</sub> " x 12 <sup>3</sup> / <sub>4</sub> "	376 x 480 x 324	30	13.6

**EAGLE GROUP**  
 100 Industrial Boulevard, Clayton, DE 19938-8903 USA  
 Phone: 302-653-3000 or 800-441-8440 • Fax: 302-653-2065  
 www.eaglegrp.com • www.eaglegrpnews.com • www.eaglehmc.com

Printed in U.S.A.  
 ©2023 by Eagle Group  
 Rev. 01/23

Spec sheets available for viewing, printing or downloading from our online literature library at our websites

Although every attempt has been made to ensure the accuracy of the information provided, we cannot be held responsible for typographical or printing errors. Information and specifications are subject to change without notice. Please confirm at time of order.