

Commercial Sinks

Sinks



CS-1818-LR-LF



CS-2424-LR-LF



CS-1818-L-LF



CS-1818-R-LF



CS-2424-2-LR-LF



CS-1818-3-LR-LF

Standard Features

- 304 stainless steel construction
- Includes integrated drainboards
- Welded bowls for added durability
- 18 gauge stainless steel
- 304 stainless steel legs with plastic bullet feet

Specifications

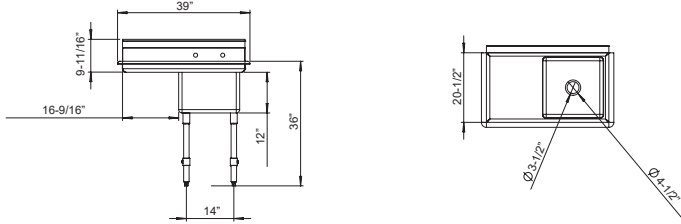
Material	<ul style="list-style-type: none"> ▪ 304 stainless steel ▪ 18 gauge stainless steel
Drain	<ul style="list-style-type: none"> ▪ 4-1/2" drain
Bowl Size	<ul style="list-style-type: none"> ▪ CS-1818: 18" x 18" ▪ CS-2424: 24" x 24"
Backsplash Height	<ul style="list-style-type: none"> ▪ 9-11/16"

Model	Length	Depth	# of Sinks	Height
CS-1818-L-LF	39"	24"	1	43"
CS-1818-R-LF	39"	24"	1	43"
CS-1818-LR-LF	54"	24"	1	43"
CS-1818-3-LR-LF	90"	24"	3	43"
CS-2424-LR-LF	72"	30"	1	43"
CS-2424-2-LR-LF	96"	30"	2	43"

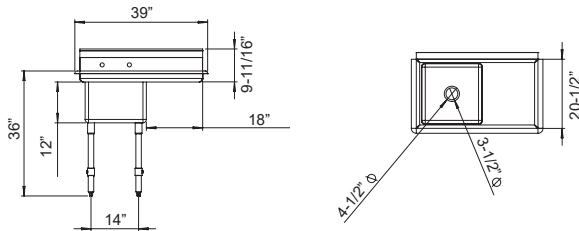
Commercial Sinks

Sinks

39" Sink with Left Side Intergraded Drain Pan CS-1818-L-LF

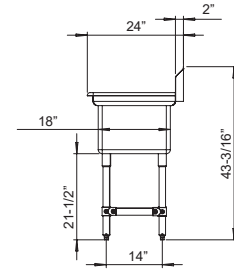


39" Sink with Right Side Intergraded Drain Pan CS-1818-R-LF

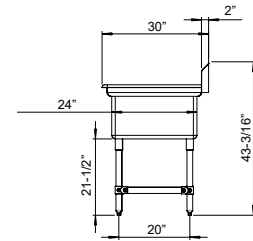


Sink Side View

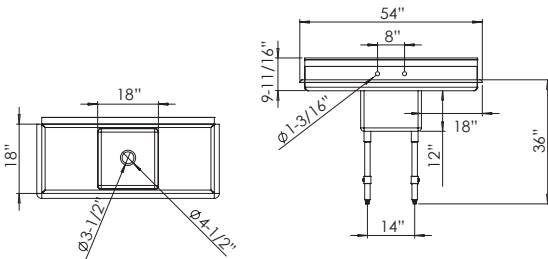
Applies to all CS-1818 Models



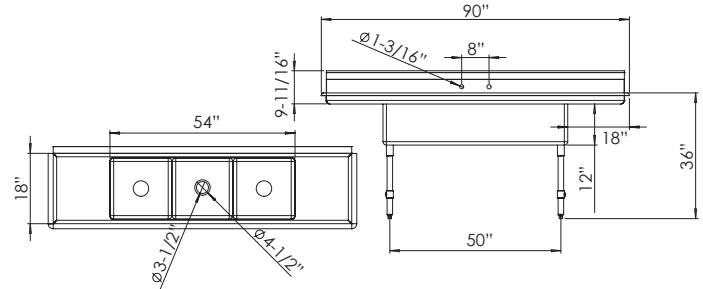
Applies to all CS-2424 Models



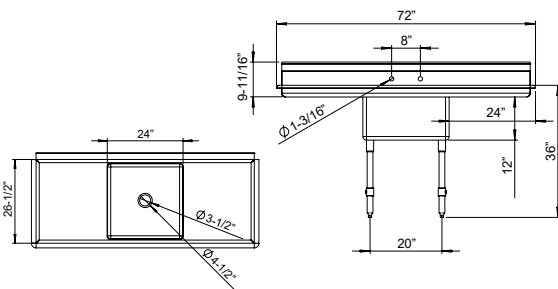
54" Sink with Intergraded Drain Pans CS-1818-LR-LF



90" Sink with Intergraded Drain Pans CS-1818-3-LR-LF



72" Sink with Intergraded Drain Pans CS-2424-LR-LF



96" Sink with Intergraded Drain Pans CS-2424-2-LR-LF

