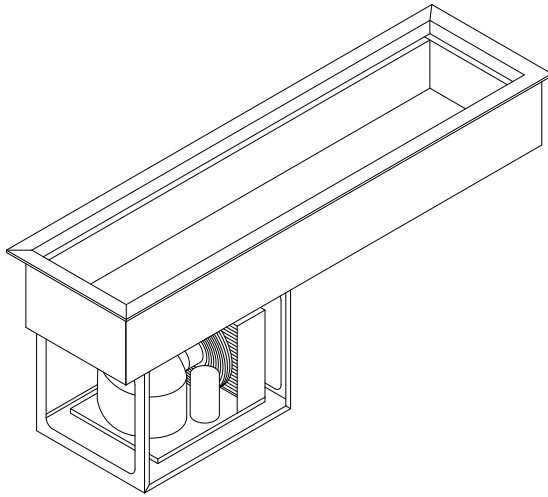




Job _____ Item No. _____

Slim Line Refrigerated Cold Pans

RCP-200SL RCP-300SL



Model: RCP-300SL shown

DESCRIPTION

Wells Refrigerated Slim Line Drop-In Cold Pans are designed for narrow counters and hold pre-chilled food products at cold, fresh, and safe serving temperatures. All models are completely self-contained in two or three-well models, are CFC free and include an 8 ft. 115V cord and plug.

SPECIFICATIONS

Exterior - One-piece top flange and coved-corner interiors constructed of 18 gauge stainless steel. Exterior body constructed of heavy gauge, corrosion resistant steel. Condensing unit mounted on corrosion resistant frame below the cold pan.

Interior - CFC free foamed-in-place insulation through-out, 1" drain located in the center for easy cleaning, and recessed ledge for pan support.

Refrigeration - Air cooled, type R-513A CFC free refrigerant system featuring wrapped coil construction on both sides and bottom, individual thermostats, on/off switch, 8 ft. cord and plug set NEMA 5-15P. Condensing unit may be easily removed for service.

STANDARD FEATURES

- Self contained, drop-in design
- Hold standard 12" by 20" food pans and fractional sized pans
- Stainless steel top and liner for maximum strength and durability
- 1" drain for ease of cleaning
- On-off switch with 8 ft cord & plug for ease of installation and operation
- Type R-513A CFC free refrigerant
- Fully insulated, CFC free, foamed-in place insulation keeps food cold while saving energy
- Recessed ledge for pan support and colder, fresher products
- Limited 1 year parts & labor warranty

OPTIONS & ACCESSORIES

- 5-year compressor warranty
- Perforated bottom strainer plate
- Adapter bars for fractional sized pans
- Remote on/off switch
- Remote models without compressors or condensing units
- Pan rails
- 2nd year parts & labor warranty

CERTIFICATIONS



WELLS MANUFACTURING INTERNATIONAL INC.

265 Hobson Street • Smithville, Tennessee 37166
Telephone 800 264 7827 • www.wells-mfg.com

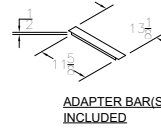
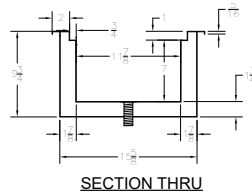
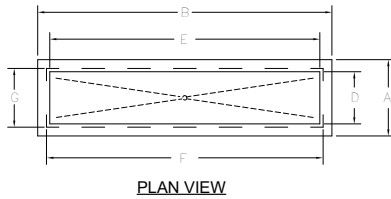
Printed in the U.S.A. • 2M-Z26246 REV - (12-24)
Specifications are subject to change without notice
and are not intended for installation purposes.



Job _____ Item No. _____

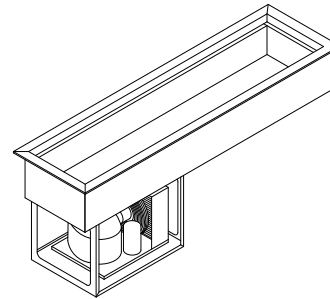
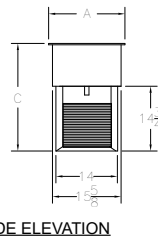
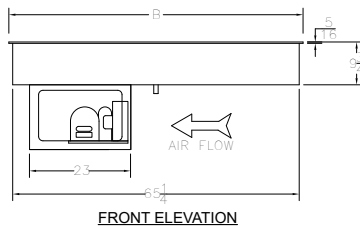
Slim Line Refrigerated Cold Pans

RCP-200SL RCP-300SL



NOTE:
Specifications are subject to change without notice and are not intended for installation purposes. See installation instructions prior to installing the unit.

RCP-300SL shown
COUNTER CUTOUT
65 1/2" X 15 7/8"



SK3254 REV - (12-24)

SPECIFICATIONS								SHIPPING INFORMATION						
Model Number	OVERALL DIMENSIONS			INTERIOR DIMENSIONS		CUT OUT DIMENSIONS		WEIGHTS		CARTON DIMENSIONS			CRATE SIZE	
	A Front to Back Inches (MM)	B Left to Right Inches (MM)	C Height Inches (MM)	D Front to Back Inches (MM)	E Left to Right Inches (MM)	F Front to Back Inches (MM)	G Left to Right Inches (MM)	SHIPPING WEIGHT POUNDS (KG)	INSTALLED WEIGHT POUNDS (KG)	WIDTH Inches (MM)	DEPTH Inches (MM)	HEIGHT Inches (MM)	CUBIC FEET	CUBIC METERS
RCP-200SL	17-3/8 (441)	46-1/4 (1175)	24-1/2 (622)	11-7/8 (302)	40-3/4 (1035)	15-7/8 (403)	44-3/4 (1137)	182 (83)	176 (80)	27 (686)	32 (813)	32 (813)	16	0.45
RCP-300SL	17-3/8 (441)	"67 (1702)"	24-1/2 (622)	11-7/8 (302)	61-1/2 (1562)	15-7/8 (403)	65-1/2 (1664)	194 (88)	187 (85)	27 (686)	46 (1168)	32 (813)	23	0.65

POWER SUPPLY						
Model Number	VOLTS	HP	AMPS	PHASE	POWER SUPPLY	Refrigerant
RCP-200SL	115	1/4	5	1	NEMA 5-15P	R-513A
RCP-300SL	115	1/4	5	1	NEMA 5-15P	R-513A

Due to periodic changes in designs, methods, procedures, policies and regulations, the specifications contained in this sheet are subject to change without notice. While Star Manufacturing exercises good faith efforts to provide information that is accurate, we are not responsible for errors or omissions in information provided or conclusions reached as a result of using the specifications. By using the information provided, the user assumes all risks in connection with such use.



WELLS MANUFACTURING INTERNATIONAL INC.

265 Hobson Street • Smithville, Tennessee 37166
Telephone 800 264 7827 • www.wells-mfg.com

Printed in the U.S.A. • 2M-Z26246 REV - (12-24)
Specifications are subject to change without notice and are not intended for installation purposes.