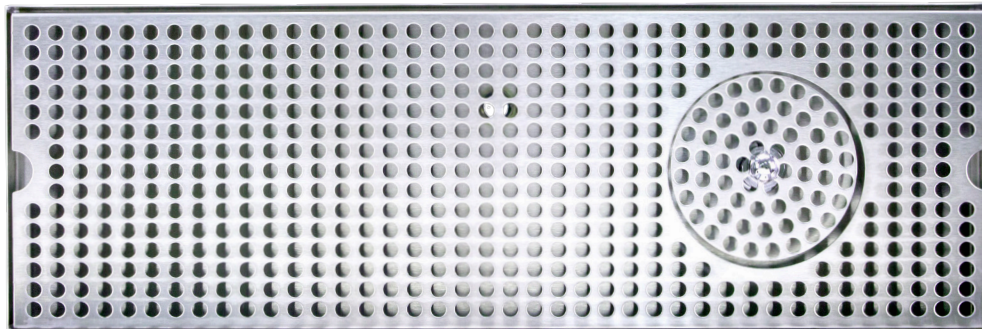
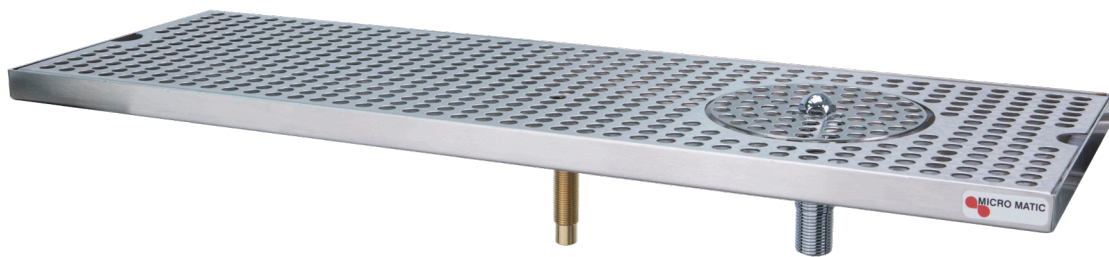




DRIP TRAY

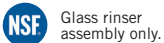
SURFACE MOUNT SERIES 8" X 30"

- Add European style while creating dispense excitement.
- Condition the glass before pouring – invert glass, push down on sprayer for cold water rinsing.
- More space with 8" width, robust 18 gauge stainless steel construction.
- Welded corners, finished smooth for safety and appearance.



DP-820D-30GR

Brushed Stainless Steel



Glass rinser
assembly only.

www.micromatic.com • 1 (866) 327-4159

8" WIDTH TRAY WITH GLASS RINSER

Job Number: _____ Location: _____

Part No.	Dimensions	Description	Shipping Weight
 DP-820D-30GR	8"W x 30"L x 3/4"H	Stainless Steel Drip Tray includes a pipe thread drain nipple (3 1/2" x 5/8 -18) 1/2" I.D. drain hose will attach to drain nipple.	TBD

Rinser Water Inlet Installation

- Always check local plumbing codes first.
- Install in-line water regulator set at 15 PSI from the street water supply.
- Install a shutoff on the rinser water supply.

NOTE: It is recommended a licensed plumber connect the glass rinser to the water supply line. Always use an in-line shut-off and water pressure regulator. Micro Matic shall not be held liable for damage caused by improper installation.

Dimensions

