



Universal Casters



E: INFO@SAPPHIREMANUFACTURING.COM | P: 718.543.2111 | SAPPHIREMANUFACTURING.COM

Universal Swivel Stem Caster **Work Table & Equipment Stand**



4 pc. Caster Set

SM-CS229

(Replaces SMTC-5)

6 pc. Caster Set

SM-CS229-6

Features:

- Works with 1-1/2" to 1-5/8" tubular legs
- 5" diameter Polyurethane Wheel
- 250lbs. Wheel Load Capacity
- Adds 6" to height

4 CASTER SET

PACKAGING:

- 4 casters, 2 with locks per set in color retail box.
- 6 Boxes per master carton

6 CASTER SET

PACKAGING:

- 6 casters, 3 with locks per set in color retail box.
- 6 Boxes per master carton

Universal Swivel Snap - In Stem Caster **For Wire Shelving**



SM-CS251

Features:

- 5" diameter Polyurethane Wheel
- Snap-in Stem Caster has 0.85" diameter pin
- 250lbs. Wheel Load Capacity
- Adds 6" to height

4 CASTER SET

PACKAGING:

- 4 casters, 2 with locks per set in color retail box.
- 6 Boxes per master carton

Universal Swivel Threaded Stem Caster



Features:

- (1/2"-13) and (3/4"-10)
- 5" diameter Polyurethane Wheel
- 250lbs. Wheel Load Capacity
- Adds 6" to height

4 CASTER SET PACKAGING:

- 4 casters with locks per set in color retail box.
- 6 Boxes per master carton

1/2"-13 Thread

SM-CS241

3/4"-10 Thread

SM-CS246

Universal Swivel Square Plate Caster



Features:

- Square Plate available in two plate sizes
- 5" diameter Polyurethane Wheel
- 250lbs. Wheel Load Capacity
- Adds 6" to height

4 CASTER SET PACKAGING:

- 4 casters with locks per set in color retail box.
- 6 Boxes per master carton

4" x 4"

SM-CS207

3-1/2" x 3-1/2"

SM-CS211

Universal Swivel Rectangular Plate Caster



SM-CS213

Features:

- Rectangular Plate (2-3/8 x 3-5/8")
- 5" diameter Polyurethane Wheel
- 250lbs. Wheel Load Capacity
- Adds 6" to height

4 CASTER SET

PACKAGING:

- 4 casters with locks per set in color retail box.
- 6 Boxes per master carton

Universal Swivel Heavy Duty Triangular Plate Caster

4 CASTER SET PACKAGING:

Features:

- Triangular Plate (5-3/8" x 7-1/2" x 5-3/8")
- 5" diameter Polyurethane Wheel
- 500lbs. Wheel Load Capacity
- Adds 6" to height

- 4 casters with locks per set in color retail box.
- 6 Boxes per master carton

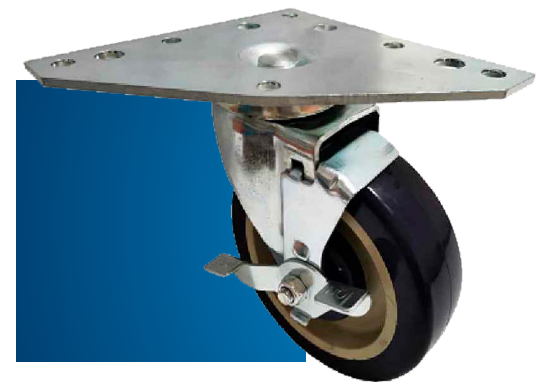


SM-CS261

Universal Convection Oven Caster

Features:

- Triangular Plate (6"x6" x 1" x 3-1/2" x 3-1/2" x 1")
- 5" diameter Polyurethane Wheel
- 500lbs. Wheel Load Capacity
- Adds 6- 1/4" to height



SM-CS266