

ES-(30,40) SKILLET WITH SLIDING DRAIN PAN (S-SDP-2)

 ES-30 with S-SDP-2

 ES-40 with S-SDP-2


S-SDP-2

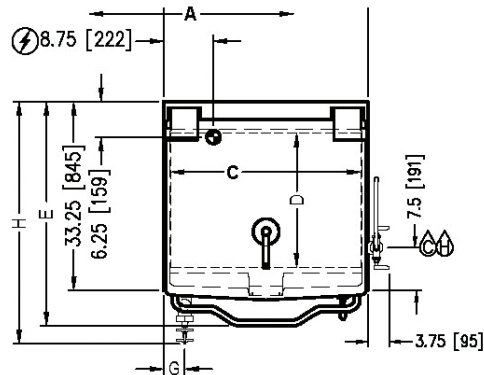
STANDARD CONSTRUCTION SPECIFICATIONS

Crown model ES-(30,40) skillet with optional sliding drain pan (S-SDP-2).

All stainless steel construction 1-1/4" square tubular frame, removable drain drawer with roller action slides, high front flip up splash shield, removable splash diffusing drawer bottom for added splash control and stationary drain connection.



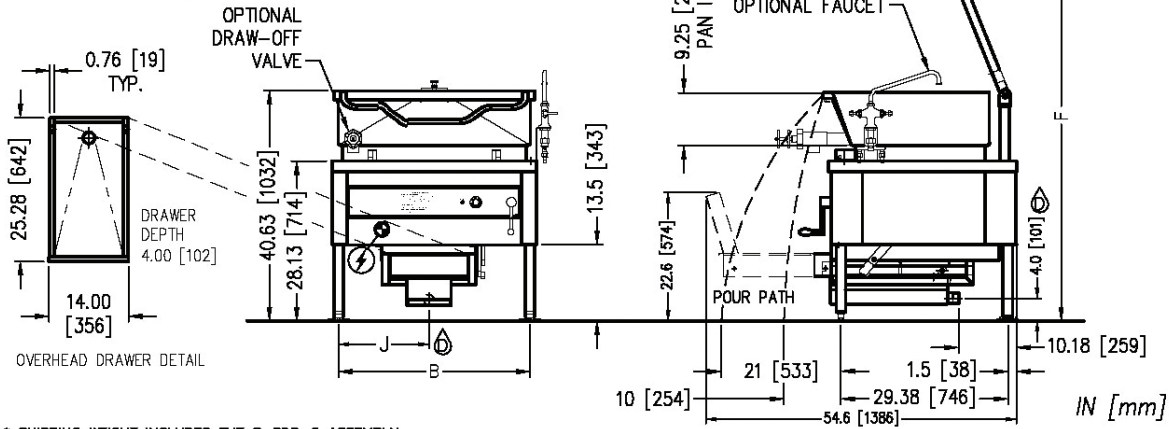
Approval Notes: _____



DIMENSIONS ARE IN INCHES [MM]

MODEL	SHIPPING WEIGHT	MINIMUM CLEARANCE *	
		Sides	0
ES-30	585 lbs. [2265 kg]	Sides	0
ES-40	750 lbs. [340 kg]	Back	0

FLANGED FEET DETAIL
 4 EQUALLY SPACED
 Ø7/16" [11mm] HOLES
 ON 2.83" [72mm] B.C.



* SHIPPING WEIGHT INCLUDES THE S-SDP-2 ASSEMBLY.

8643R1

SERVICE CONNECTIONS

- ELECTRICAL CONNECTIONS: to be specified on data plate
- COLD WATER: 3/8" O.D. tubing to faucet (OPTIONAL)
- HOT WATER: 3/8" O.D. tubing to faucet (OPTIONAL)
- DRAIN: 1-1/2"-11-1/2" NPT (OPTIONAL)

DIMENSIONS

MODEL	CAPACITY	A	B	C	D	E	F	G	H		J
									Ø2	Ø3	
ES-30	30 Gallons (114 liters)	36" (914)	33.63" (854)	33.5" (851)	23.5" (597)	38.88" (987)	72.38" (1838)	3.75" (95)	42.63" (1083 mm)	46.5" (1181 mm)	15.9 (404)
ES-40	40 Gallons (152 liters)	48" (1219)	45.63" (1159)	43.5" (1105)	23" (584)	39.38" (1000)	71.88" (1826)	4.75" (121)	2.63" (1083 mm)	46.5" (1181 mm)	22.8 (580)

UTILITY INFORMATION

MODEL	kW	PHASE	AMPS PER LINE					
			208V	220V	240V	380V	415V	480V
ES-30	12	1	57.7 A	54.5 A	50.0 A	N/A	N/A	N/A
		3	33.3 A	31.5 A	28.9 A	18.2 A	16.7 A	14.4 A
ES-40	18	1	86.5 A	81.8 A	75.0 A	N/A	N/A	N/A
		3	50.0 A	47.2 A	43.3 A	27.3 A	25.0 A	21.7 A

**INTENDED FOR COMMERCIAL USE ONLY.
 NOT FOR HOUSEHOLD USE.**

