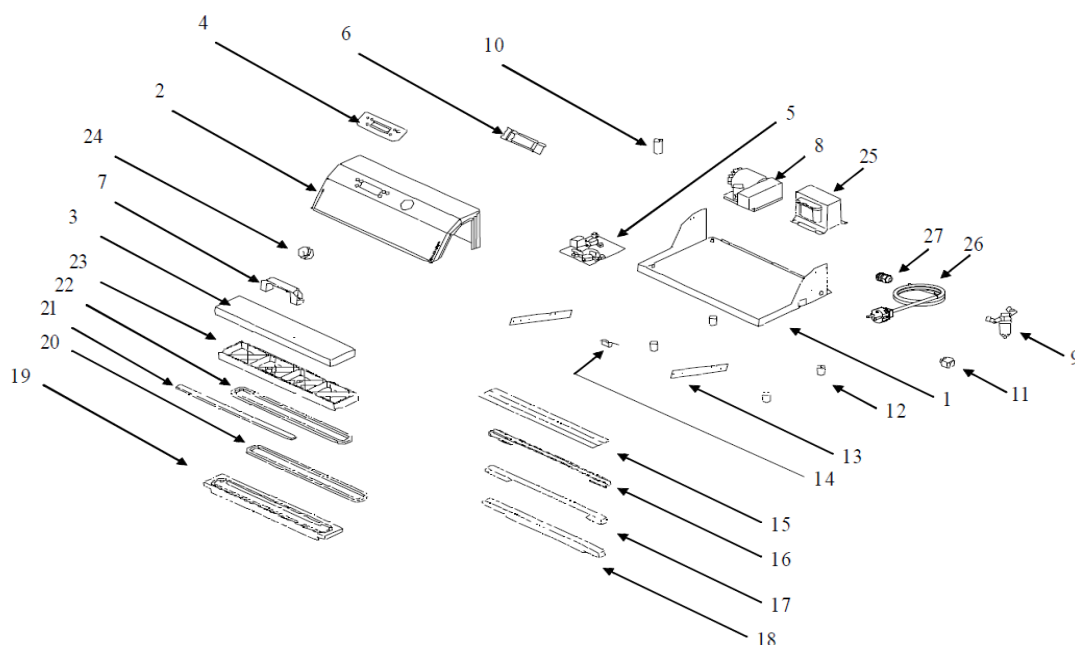
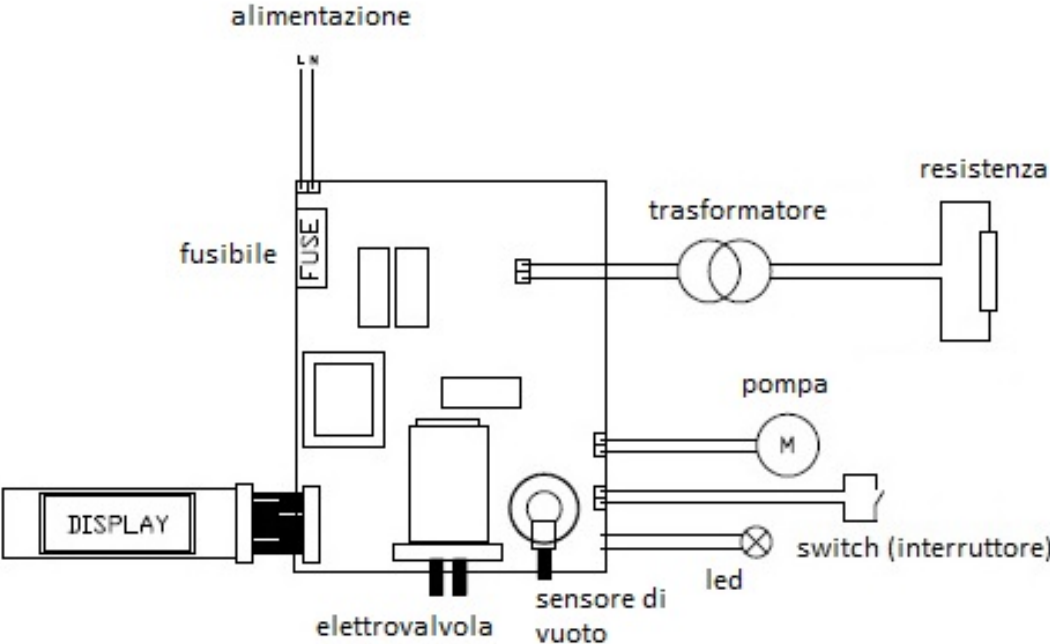


EXPLODED VIEW MISTRAL - SIROCCO



REF	DESCRIPTION	QUANTITIES	MOQ
1	BASE	1	PC
2	STRUCTURE	1	PC
3	LID	1	PC
4	ADHESIVE LEXAN	1	PC
5	POWER ELECTRONIC BOARD + TRANSFORMER MISTRAL	1	PC
5	ELECTRONIC BOARD	1	PC
6	DISPLAY BOARD	1	PC
7	HANDLE	1	PC
8	PUMP MISTRAL	1	PC
8	PUMP SIROCCO	1	PC
9	FILTER	1	PC
10	SILENCER	1	PC
11	SWITCH BUTTON I-O	1	PC
12	FOOT	4	PCS
13	LID SUPPORT LEVER	2	PCS
14	START MICROSWITCH	1	PC
15	UPPER WELDING BAR TEFLON	1	MT
16	RESISTENCE	1	MT
17	LOWER WELDING BAR TEFLON	1	MT
18	WELDING BAR SUPPORT	1	PC
19	LOWER DECOMPRESSION CHAMBER MISTRAL	1	PC
19	LOWER DECOMPRESSION CHAMBER SIROCCO	1	PC
20	LOWER GASKET MISTRAL	1	PC
20	LOWER GASKET SIROCCO	1	MT
21	RED COUNTERBAR	1	MT
22	UPPER GASKET MISTRAL	1	PZ
22	UPPER GASKET SIROCCO	1	MT
23	UPPER DECOMPRESSION CHAMBER MISTRAL	1	PC
23	UPPER DECOMPRESSION CHAMBER SIROCCO	1	PC
24	VACUUM GAUGE	1	PC
25	TRANSFORMER MISTRAL	1	PC
25	TRANSFORMER SIROCCO	1	PC
26	POWER CABLE	1	PC
27	CABLE GLAND	1	PC

SIMPLIFIED ELECTRIC SCHEME MISTRAL - SIROCCO



TECHNICAL DATA

Model: MISTRAL

Dimensions	420x300x180 h mm
Voltage	230 volt 50 Hz
Welding bar	330 mm
Pump	20 l/min
Bodywork	stainless steel
Weight	8,5 kg
Vacuum creation	with sensor
Sealing	Electronic 11 variable settings
Automatic cooling/Timer system	
Control panel	digital LCD display 5 languages
Air re-entry	with electro-valve
Start up	with micro switch
Vacuum creation	bags, containers, pots

Model: SIROCCO

Dimensions	520x300x180 h mm
Voltage	230 volt 50 Hz
Welding bar	2x430 mm
Pump	20 l/min
Bodywork	stainless steel
Weight	12 kg
Vacuum creation	with sensor
Sealing	Electronic 11 variable settings
Automatic cooling/Timer system	
Control panel	digital LCD display 5 languages
Air re-entry	with electro-valve
Start up	with micro switch
Vacuum creation	bags, containers, pots