

TRAY SLIDE NO 1 (26)

INSTALLATION MANUAL

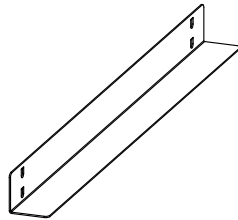
ITEM ①



H26R104560
(POST TRAY SLIDE NO 1)

X 4 EACH

ITEM ②



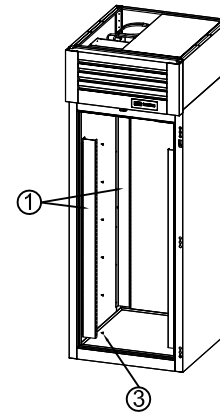
H26R104460
(TRAY SLIDE NO 1)

X 16 EACH

ITEM ③

7142401303
(SCREW M4*13 DELTA COATING #8 1/2)

X 24 EACH

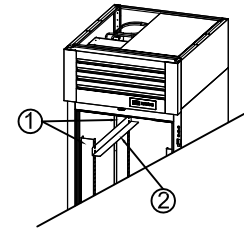


1 INSTALLING POSTS

INSTALL ITEM 1 WITH ITEM 3 TO BOTH SIDES OF CABINET LINER

TWO POST ON EACH SIDE FACING INWARD AS SHOWN

THERE ARE PRE-DRILLED HOLES TO INSTALL POST



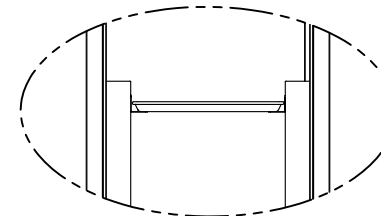
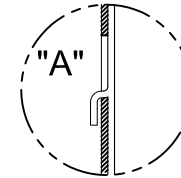
2 INSTALLING TRAY SLIDES

INSTALL ITEM 2 INTO ITEM 1 AS SHOWN.

TRAY SLIDE HOOKS SHOULD BE POSITIONED INSIDE OF RECTANGLE OPENING (SEE "A")

TRAY SLIDE ALIGNMENT (ON EACH POST) SHOULD BE ON THE SAME RECTANGLE OPENING

REPEAT INSTALLMENT OF TRAY SLIDES 8 SETS



3 INSTALLING BUN PANS

TRAY SLIDES NO 1 USE
18" X 26" BUN PANS
18" X 14" BUN PANS