

Dis-assembling | CLEANING | Re-assembling

For more detailed information on operation and cleaning, go to www.citrusamerica.com/training



1. Turn off and **unplug** machine.



2. Empty **fruit supply tunnel**. Ensure that no oranges remain in the **fruit supply tunnel** or juicing area.



3. Unscrew **front cover screws** and remove **front cover**. **CAUTION! HANDWASH ONLY!**



4. Loosen **cross holder screw** and remove **cross holder**.



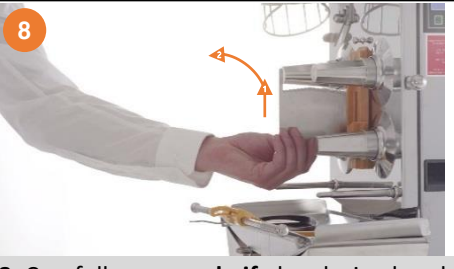
5. Remove **upper pressing elements**.



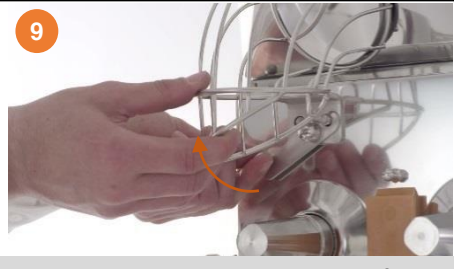
6. Remove **peel ejectors**.



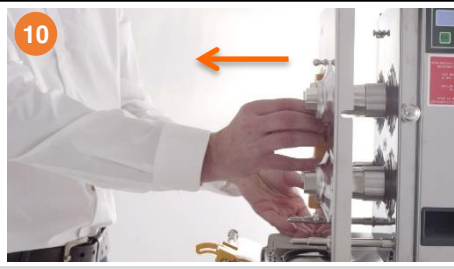
7. Remove **lower pressing elements**.



8. Carefully remove **knife** by placing hand on the bottom, moving it upward and then pulling it out. **CAUTION: KNIFE IS SHARP!**



9. Open **locking lever** and remove **fruit supply tunnel**.



10. Remove **double cover**.



11. Remove **fruit sieve support** with **MTS**. Remove **peel bucket**.



12. If cabinet-mounted, remove **peel chute** and **blue waste bucket**.

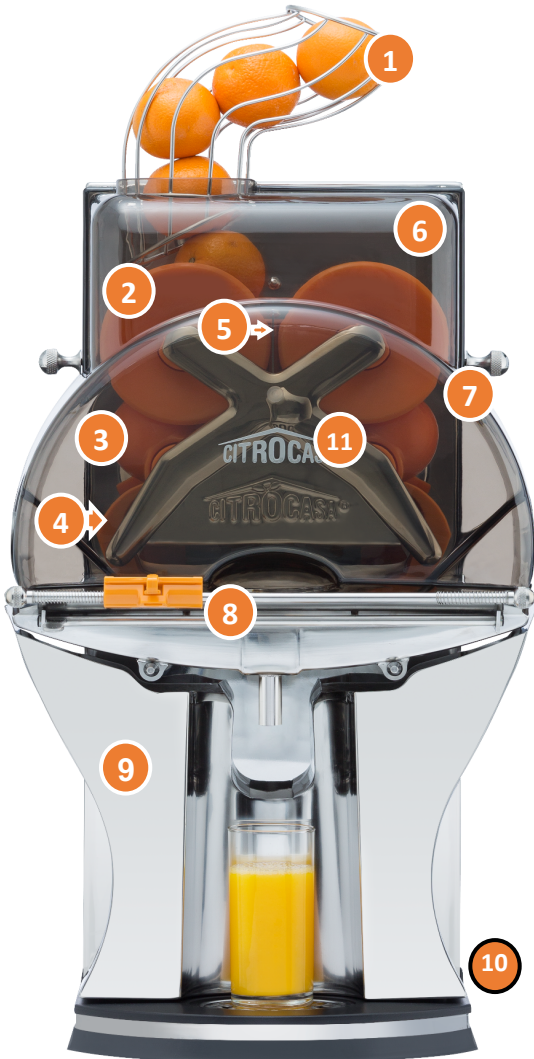
1. BEFORE CLEANING **SWITCH OFF AND UNPLUG JUICER.**

2. CLEAN JUICER AT LEAST 1X DAY!

3. ENSURE THAT ALL PARTS ARE MOUNTED PROPERLY AFTER REASSEMBLY

4. IF YOUR JUICER DOES NOT START AFTER INPUT FROM ON/OFF SWITCH, REFER TO THE CONTROL PANEL.

5. KEEP THESE INSTRUCTIONS NEAR JUICER!



- ① Fruit supply tunnel with locking lever
- ② 2x Upper pressing elements, left and right
- ③ 2x Lower pressing elements, left and right
- ④ 2x Peel ejectors, left and right
- ⑤ SCS Knife
- ⑥ Double cover (stainless)
- ⑦ Front cover (acrylic) with front cover screws (stainless), left and right
- ⑧ Fruit sieve support with fruit sieve and MTS
- ⑨ Peel bucket (Peel chutes when cabinet-mounted)
- ⑩ Main power switch
- ⑪ Cross holder with cross holder screw



ALL PARTS EXCEPT FOR THE ACRYLIC FRONT COVER ARE DISHWASHER SAFE.



USE A NON-ABRASIVE DETERGENT AND A SOFT TOWEL FOR CLEANING.

DO NOT SPRAY OR HOSE DOWN THE MACHINE. ONLY WIPE DOWN.

TECH SUPPORT:

1-855-MY-CITRO

(1-855-692-4876)

For more detailed information on operation and cleaning, go to www.citrusamerica.com/training