

Dis-assembling | CLEANING | Re-assembling

For more detailed information on operation and cleaning, go to www.citrusamerica.com/training



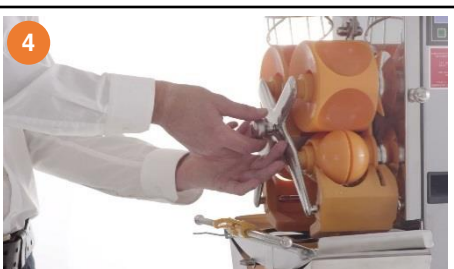
1. Turn off and unplug juicer.



2. Remove fruit basket and lift out the 2-level rotation plate. CAUTION! DO NOT HOSE DOWN JUICER!



3. Unscrew front cover screws and remove front cover. CAUTION! HANDWASH ONLY!



4. Loosen cross holder screw and remove cross holder.



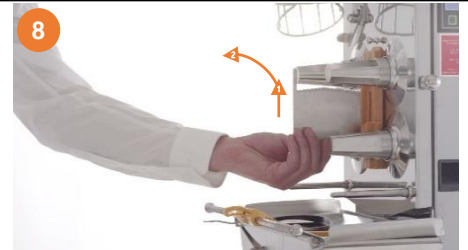
5. Remove upper pressing elements.



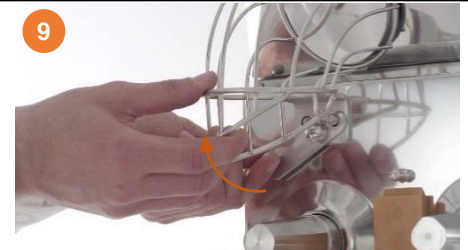
6. Remove peel ejectors.



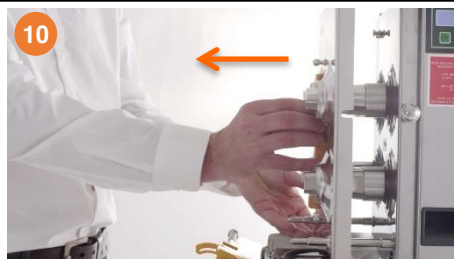
7. Remove lower pressing elements.



8. Carefully remove knife by placing hand on the bottom, moving it upward and then pulling it out. CAUTION: KNIFE IS SHARP!



9. Open locking lever and remove fruit supply tunnel.



10. Remove double cover.

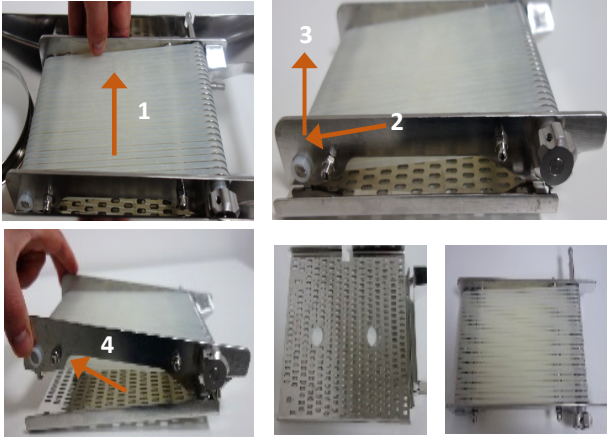


11. Remove fruit sieve support with MTS. Remove peel bucket.



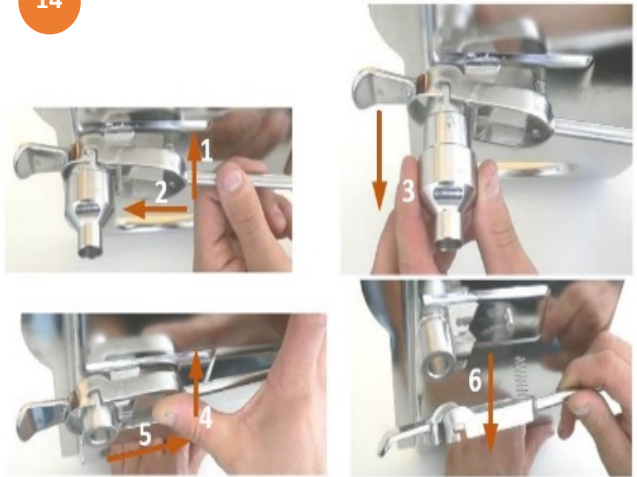
12. If cabinet-mounted, remove peel chute and blue waste bucket.

13



13. Disassemble the **ATS** in the shown order.

14



14. Disassemble the **Self-Service Tap** in the order shown.



1. **BEFORE CLEANING SWITCH OFF AND UNPLUG JUICER.**
2. **CLEAN JUICER AT LEAST 1X DAY!**
3. **ENSURE THAT ALL PARTS ARE MOUNTED PROPERLY AFTER REASSEMBLY**
4. **IF YOUR JUICER DOES NOT START AFTER INPUT FROM ON/OFF SWITCH, REFER TO THE CONTROL PANEL.**
5. **KEEP THESE INSTRUCTIONS NEAR JUICER!**

- ① Fruit basket, fruit supply tunnel, and hopper
- ② Upper pressing elements, left and right
- ③ Lower pressing elements, left and right
- ④ Peel ejectors, left and right
- ⑤ SCS Knife
- ⑥ Double cover (stainless, separates housing and juicing area)
- ⑦ Front cover (acrylic) with front cover screws (stainless), left and right
- ⑧ Cross holder with cross holder screw
- ⑨ Fruit sieve support with ATS
- ⑩ SB tap
- ⑪ Peel bucket (Peel chutes when cabinet-mounted)
- ⑫ Main power switch



ALL PARTS EXCEPT FOR THE ACRYLIC FRONT COVER ARE DISHWASHER SAFE.

USE A NON-ABRASIVE DETERGENT AND A SOFT TOWEL FOR CLEANING.

DO NOT SPRAY OR HOSE DOWN THE MACHINE. ONLY WIPE DOWN.

TECH SUPPORT:

1-855-MY-CITRO

(1-855-692-4876)

For more detailed information on operation and cleaning, go to www.citrusamerica.com/training