

Dis-assembling | CLEANING | Re-assembling

For more detailed information on operation and cleaning, go to www.citrusamerica.com/training



1

Ensure that **no fruit** remain in the fruit supply tunnel or the pressing elements.



2

Ensure that the lower pressing elements are in a horizontal position.



3

Loosen the **Front Cover Screws** and remove **Front Cover**.
CAUTION! WASH ONLY BY HAND.



4

Remove the **Cross Holder** by loosening and pulling the screw.



5

Remove the **Upper Pressing Elements**.



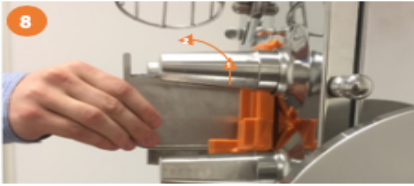
6

Remove the **Peel Ejectors**.



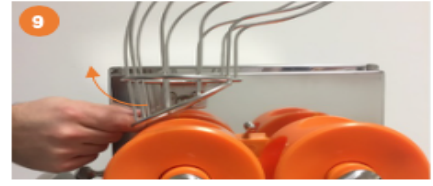
7

Remove the **Lower Pressing Elements**.



8

Remove the **SCS knife** by moving it upward and pulling it off.
CAUTION! RISK OF INJURY!



9

Remove the **Fruit Supply Tunnel** by opening the fixation lever.



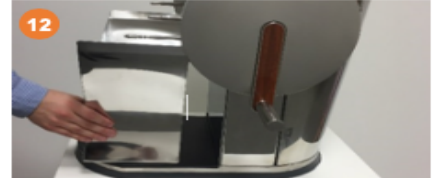
10

Remove the **Double Cover**. Clean juicer with warm, clean water and damp cloth.



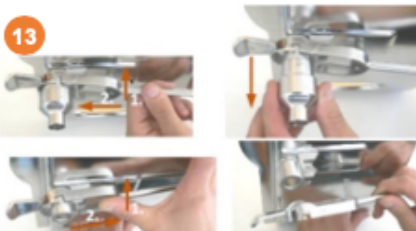
11

Remove the **MTS-System and Sieve Support** (fruit sieve, fruit sieve holder, MTS slider)



12

Remove the **Peel Bucket** from the machine.



13

Disassemble the **Self-Service Tap** in the shown order.

1. BEFORE CLEANING **SWITCH OFF AND UNPLUG JUICER.**

2. CLEAN JUICER AT LEAST 1X DAY!

3. ENSURE THAT ALL PARTS ARE MOUNTED PROPERLY AFTER REASSEMBLY

4. IF YOUR JUICER DOES NOT START AFTER INPUT FROM ON/OFF SWITCH, REFER TO THE CONTROL PANEL.

5. KEEP THESE INSTRUCTIONS NEAR JUICER!



- ① Fruit Supply Tunnel
- ② Upper Pressing Elements
- ③ Lower Pressing Elements
- ④ Peel Ejectors
- ⑤ SCS Knife
- ⑥ Double Cover
- ⑦ Cross holder
- ⑧ Front Cover
- ⑨ Fruit Sieve Support
- ⑩ Peel Bucket
- ⑪ SB-Tap
- ⑫ Flywheel
- ⑬ Handle



ALL PARTS EXCEPT FOR THE ACRYLIC FRONT COVER ARE DISHWASHER SAFE.



USE A NON-ABRASIVE DETERGENT AND A SOFT TOWEL FOR CLEANING.

DO NOT SPRAY OR HOSE DOWN THE MACHINE. ONLY WIPE DOWN.

TECH SUPPORT:

1-855-MY-CITRO

(1-855-692-4876)