



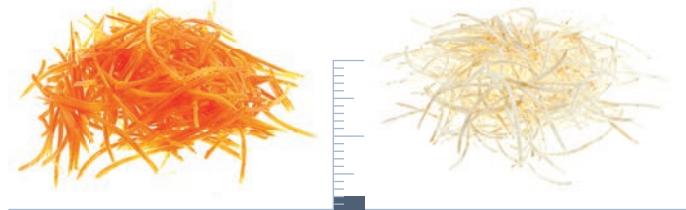
Cutting guide

& stainless
steel discs



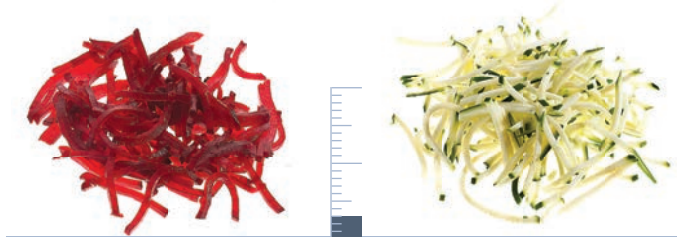
Julienne

5/64" (2 mm) to 3/8" (10 mm)



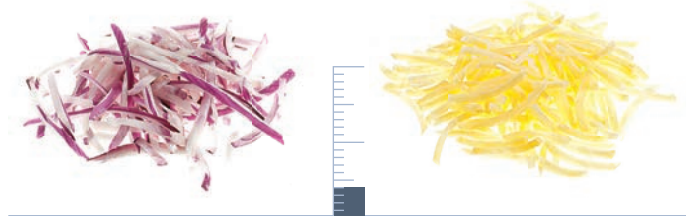
AS2XX
650166

5/64" (2 mm)



AS3XX
650167

1/8" (3 mm)



AS4XX
650077

5/32" (4 mm)



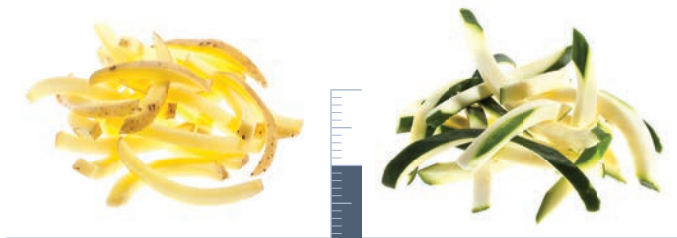
AS6XX
650078

1/4" (6 mm)



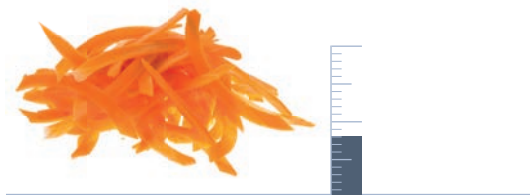
AS8XX
650079

5/16" (8 mm)



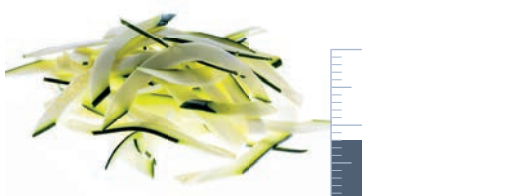
AS10XX
650080

3/8" (10 mm)



AS2X8X
650158

5/64" x 5/16"
(2x8 mm)



AS2X10X
650159

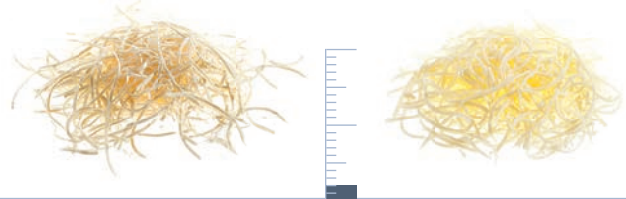
5/64" x 3/8"
(2x10 mm)





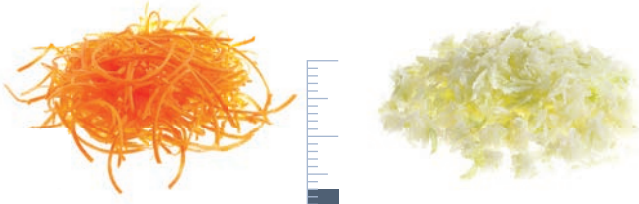
Graters

5/64" (2 mm) to 23/64" (9 mm)



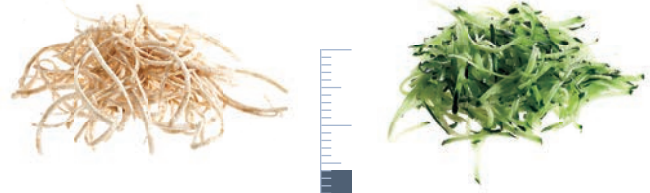
J2X
653773

5/64" (2 mm)



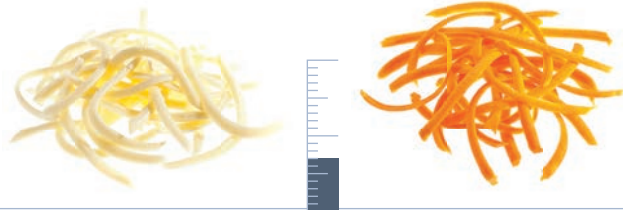
J3X
653774

1/8" (3 mm)



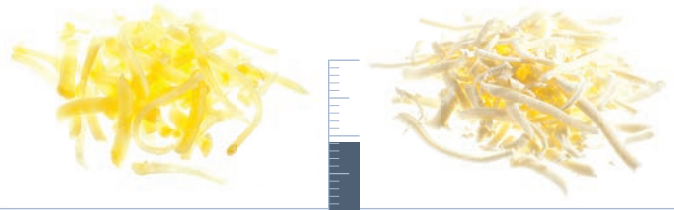
J4X
653775

5/32" (4 mm)



J7X
653776

9/32" (7 mm)



J9X
653777

11/32" (9 mm)



KX
653778

for breadcrumbs/potatoes



PX
653779



for parmesan/chocolate



Slicers

0.6 mm to 33/64" (13 mm)

All slicers can be combined with **dicing grids (MT)** and **grids for chips (FT)**



C06SX
650081

0.6 mm



C1SX
650082

1/32" (1 mm)



C2SX
650083

5/64" (2 mm)



C3SX
650084

1/8" (3 mm)



C4SX
650085

5/32" (4 mm)



C5SX
650086

3/16" (5 mm)



C6SX
650087

1/4" (6 mm)



C8SX
650088

5/16" (8 mm)



C10SX
650160

3/8" (10 mm)



C12SX
650161

15/32" (12 mm)



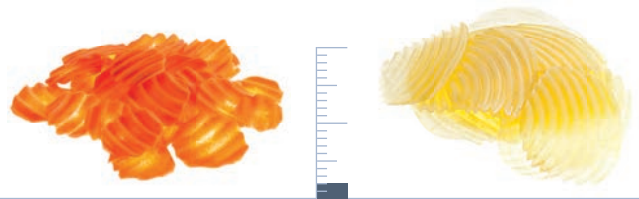
C13SX
650165

33/64" (13 mm)



Wavy slicers

5/64" (2 mm) to 3/8" (10 mm)
All wavy slicers can be combined with **dicing grids (MT)** and **grids for chips (FT)**



C2WX
650089

5/64" (2 mm)



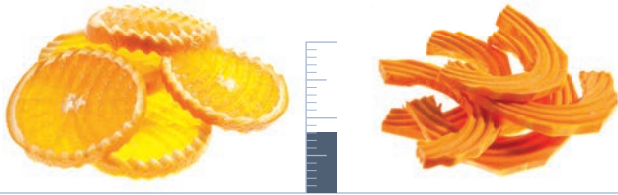
C3WX
650090

1/8" (3 mm)



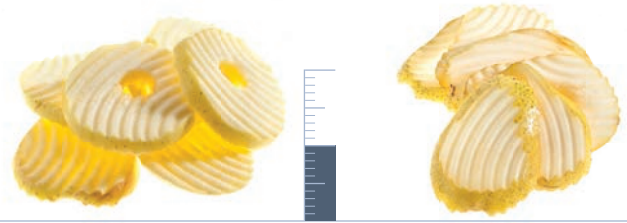
C6WX
650091

1/4" (6 mm)



C8WX
650162

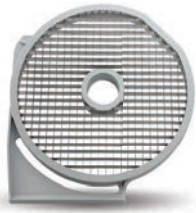
5/16" (8 mm)



C10WX
650164

3/8" (10 mm)





Dicing grids

3/16" x 3/16" (5x5 mm) to 25/32" x 25/32" (20x20 mm)
to be combined with **slicers (C)** and **wavy slicers (CW)**



C5SX+MT05T 3/16" x 3/16" x 3/16"
650086+653566 (5x5x5 mm)



C8SX+MT08T 5/16" x 5/16" x 5/16"
650088+653567 (8x8x8 mm)



C10SX+MT10T 3/8" x 3/8" x 3/8"
650160+653568 (10x10x10 mm)



C12SX+MT12T 15/32" x 15/32" x 15/32"
650161+653569 (12x12x12 mm)



C10WX+MT20T 3/8" x 25/32" x 25/32"
650164+653570 (10x20x20 mm)



C2WX+MT20T 5/64" x 25/32" x 25/32"
650089+653570 (2x20x20 mm)



C13SX+MT20T 33/64" x 25/32" x 25/32"
650165+653570 (13x20x20 mm)



C4SX+MT20T 5/32" x 25/32" x 25/32"
650085+653570 (4x20x20 mm)



C3WX+MT12T 1/8" x 15/32" x 15/32"
650090+653569 (3x12x12 mm)



C6WX+MT10T 1/4" x 3/8" x 3/8"
650091+653568 (6x10x10 mm)





Grids for chips

1/4" (6 mm), 5/16" (8 mm) and 3/8" (10 mm)
to be combined with **slicers (C)** and **wavy slicers (CW)**



C6SX+FT06

650087+653571
1/4" x 1/4"
(6x6 mm)



C8SX+FT08

650088+653572
5/16" x 5/16"
(8x8 mm)



C10WX+FT10

650164+653573
3/8" x 3/8"
(10x10 mm)



C2SX+FT10

650083+653573
5/64" x 3/8"
(2x10 mm)



C3WX+FT10

650090+653573
1/8" x 3/8"
(3x10 mm)



ELECTROLUX PROFESSIONAL
North American Headquarters

10200 David Taylor Drive
Charlotte, NC 28262

Phone: 1.866.449.4200
Fax: 704.547.7401



Visit the website and view the
interactive cutting guide
www.electroluxusa.com/professional

Follow us on    

Excellence with the environment in mind

- ▶ All our factories are ISO 14001-certified
- ▶ All our solutions are designed for low consumption of water, energy, detergents and harmful emissions
- ▶ In recent years over 70% of our product features have been updated with the environmental needs of our customers in mind
- ▶ Our technology is ROHS and REACH compliant and over 95% recyclable
- ▶ Our products are 100% quality tested by experts

