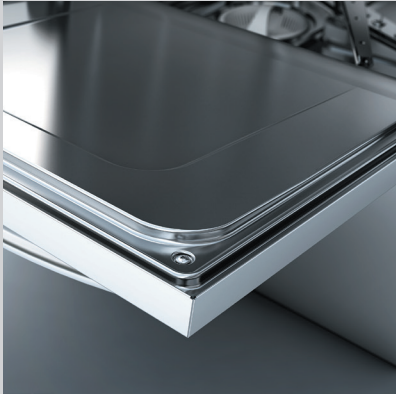
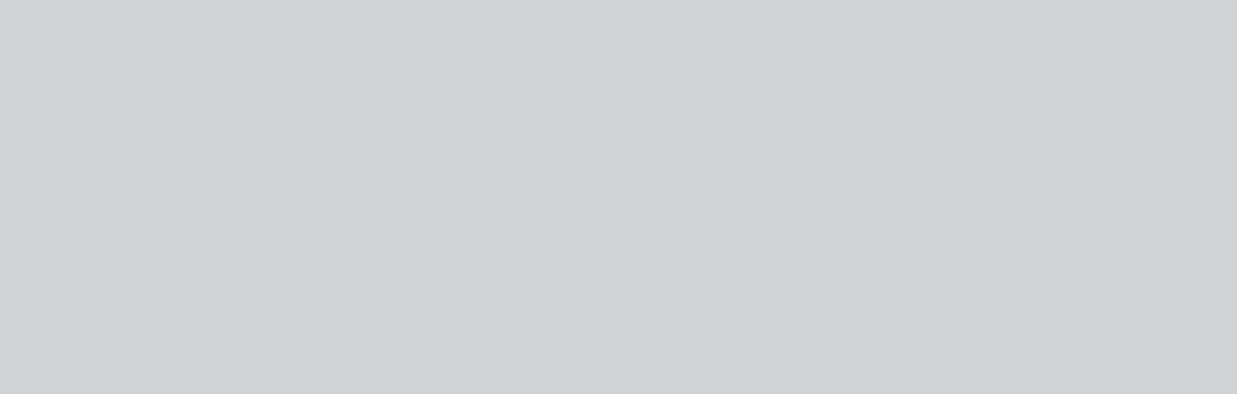




Dishwashing
E-VO Generation





Dishwashing

E-VO Generation

E-VO Generation.....	3
CONCEPT +	8
Hoodtype	10
Undercounter	11
CONCEPT.....	12
Undercounter	14
Glasswasher	15
ACCESSORIES.....	16
TECHNICAL DATA	17

**INNOVATIVE
IDEAS**

**INVEST IN
THE FUTURE.**



eVO
GENERATION

from EVOLUTION...
efficiency, efficacy,
ecology, ergonomics,
economy, excellence...



An innovative and revolutionary idea revolves around the new generation of Fagor dishwashers: to combine in a single family all the features the industry requires, even at the most demanding levels.

This is the Fagor philosophy, we propel progress and evolution through our products by designing washing machines from two different points of view: product and usability. On the one hand, we focused on the product to be more efficient, effective and environmentally-friendly. On the other hand, its usability: simpler, easier to maintain and clean.

A new generation with three different ranges that adapt to and cover all the requirements of a dishwashing area and which are committed to design, efficiency, robustness and reliability.

A new path for investing in the future and offering a new way of understanding dishwashing to the global market. Fagor is continuously evolving, changing and reinventing itself. **Always.**

One body, three ranges

New **E-VO** Generation is a dream come true, something more than one step further: it is a different and innovative generation... Revolutionary.

Because **E-VO** is built on a unique basic idea: create a single body structure that offers common benefits for its three different ranges: **E-VO ADVANCE**, **E-VO CONCEPT+** and **E-VO CONCEPT**.

Three ranges which cover not only the specific needs of each client (restaurants, bars, cafes, pubs, schools, hotels, etc.), but create a smarter and simpler product at the same time; revolutionizing the commercial dishwashing world.

evo **ADVANCE**

A NEW WAY OF UNDERSTANDING EXCLUSIVITY.
Machines designed for those who want the best of the best, but with simple operation, easy to maintain and highly efficient.

- HOOD TYPE
- UNDERCOUNTER

evo **CONCEPT +**

MAKE IT SIMPLE. MAKE IT POSSIBLE.
E-VO CONCEPT+ range the perfect solution for those locations with low pressure water network and though high production requirements. CONCEPT+ has arrived, simply possible.

- HOOD TYPE
- UNDERCOUNTER

evo **CONCEPT**

HIGH TECHNOLOGY AFFORDABLE FOR EVERYONE.
For those who believe that technology and simplicity can go hand in hand, E-VO CONCEPT has landed.

- UNDERCOUNTER
- GLASSWASHER

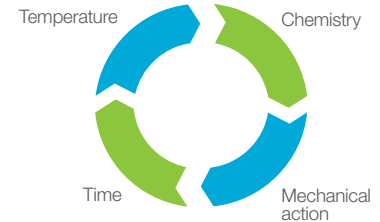
Features

EFFI WASH

EFFI-WASH

Newly optimized hydraulic system provides a strong mechanical action combined with the optimum clean water in the tank, and the balanced power to keep the perfect temperature during the whole sanitation cycle of the wash. And all that, assuring the promised productivity.

A powerful system which assures one of the most important factors of the Sinner's cycle: mechanical action, saving high quantities of chemicals.



SINNER'S CYCLE

EFFI RINSE

EFFI-RINSE

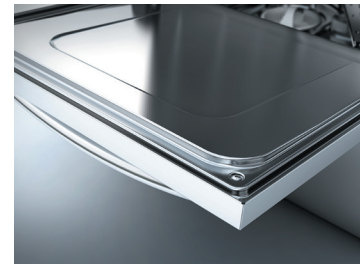
EFFI-RINSE system assures a perfect hygienic result with a linear 180°F full rinsing cycle thanks to its incorporated rinsing pump and air brake system design. It also works with low input water pressure; becoming the perfect system when the installation water network does not reach the minimum recommended PSI. EFFI-RINSE green light displays when the system is taking care of your machine.

EFFI RINSE SYSTEM

EFFI SILENT

EFFI-SILENT

Full Double skin body to isolate machine's noise from the environment, making the atmosphere more peaceful. The door has double skin with special pressed insulation material, and stamped finishing to improve noise insulation. Keeps the heat inside the machine for even greater energy savings. The door system is designed to have a smooth and quiet close with top quality finishing.



MULTI CONNECTION BOX

MULTI-CONNECTION BOX

No need to remove covers or panels to install or check the network connectivity. Low risk to have problems during the electrical installation.

Designed to improve accessibility and reduce maintenance costs. Make single or three phases connection by only opening the small cover.



MULTI POWER

MULTIPOWER

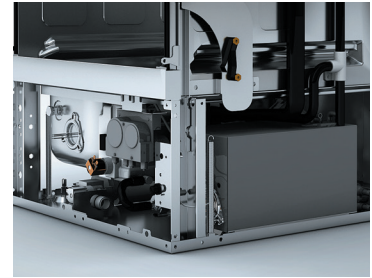
Get the highest power to maximize machine's productivity, by just connecting the machine easily from outside (i.e. 9kW boiler). If you prefer a lower consumption, you can make the proper connection (i.e. 3kW boiler).



**SOFT
START**

SOFT-START

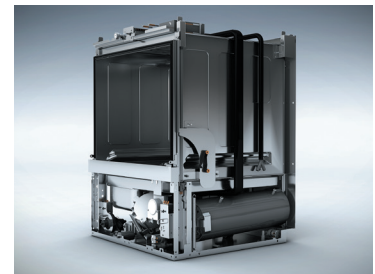
It assures a low noise level of the bar or restaurant where it is installed and prevents the glasses and ware from moving inside the rack, protecting them from damage and improving the washing cycle of all the ware. It consists in a wash-pump power control during its first stage.



**ECO
FILL**

ECO FILL

The NEW Thermostatic water tank filling system: allows to speed up drastically the start-up time of the machine, because the wash tank is filled in with hot water previously heated in the boiler.



**ROCK
COUNTER-
BALANCED
DOOR**

ROCK COUNTERBALANCED DOOR

Double spring and stainless steel hinge system tested to resist the strongest usage of the market, with more than 360.000 openings.

It also protects the user from burnings with steam thanks to the 3-step design: (1) remove steam, (2) check rack, and (3) remove/place rack.



**STAMPED
PHILOSOPHY**

STAMPED PHILOSOPHY

A fully new stainless steel body and structure made to resist even to the strongest usage of the market. An evolved generation with stamped new door design, stamped wash tank and rack guides, stamped control panel... We bet for this philosophy because it reduces your running costs (you spend less time cleaning) and increases machine's lifetime. If you win, we win.



**IPX4
HUMIDITY
PROOF**

IPX4 HUMIDITY- PROOF

Designed to have a stronger protection IPX4 against water hose cleaning and external humidity.



Benefits



ECONOMY

In line with Fagor Green Evolution, E-VO offers a significant amount of running cost savings compared to standard and high range machines on the market, becoming in a very competitive and profitable generation for you.

More than 28%(*) reduction of water consumption in Hood-Type, and up to 50% reduction of electricity consumption with real working conditions compared to previous generations and reference competitors.

But Undercounter models do not get stuck there! Improvement of more than 24%(*) in daily water consumption from previous generations and standard machines in the market. Because less tank volume, less rinse water consumption per cycle and an optimized hydraulic system means also less chemicals, and finally a pure success in your washing results... and in your pocket.

No doubt. Designed and built thinking of your economy. As you can see, running costs are reduced drastically in every range! Because we know that you need it, and there you have it!

(*) Assumed daily: 55 racks (Undercounter) and 90 racks (Hood type).



ECOLOGY

For a sustainable planet, optimization of the world's resources is a must. In Fagor we know it. For that reason, E-VO Generation represents a 50% improvement of recyclability ratio of the machines by substituting materials with more efficient and ecologic alternatives. A fully new design thought to optimize running costs and environment impact. Because we take care of our environment. Finally, an EVO-lution new way of THINKING GREEN...



SANITATION

Because a dishwasher is born to wash... E-VO Generation provides a MAGNI-EFFICIENT washing performance while maximizing cleanliness of your wares and your working area. A perfect scientific balance accomplishing SINNER'S CYCLE. Definitely, pure physics, pure science. "IT IS BORN TO WASH, IT IS THE BEST ON IT".



SIMPLICITY, ROBUSTNESS... RELIABILITY

Simplicity is our ultimate design philosophy. Simplification of body parts through stamped parts, reducing the amount of manual welding and screws, introducing automatic robot welding, increasing components accessibility, reducing the amount of components, and therefore increasing machine's final reliability.

With FAGOR'S E-VO Generation you will experience a fully new stainless steel body and structure made to resist and resist to the strongest usage of the market, allowing a long machine's lifetime and at the end of the day, saving you money.

And we are not the only ones to suggest it... "Simplicity is the ultimate sophistication" (Leonardo Da Vinci).



VERSATILITY & FLEXIBILITY

Three full ranges, multiple models, versions, plug & play kits, and a wide variety of features. E-VO generation gives you a unique versatility and flexibility.

The highest door and hood clearance that would only be offered in much more expensive models in the marketplace, but from the very basic range. A big useful height allows to wash trays with an undercounter machine and also a hood type one (sheet pan, for example), increasing the generation's versatility and minimizing the need for special extra equipment to wash big pots, trays and dishes.



SAFETY

Safety Efficacy is a priority. Safe for the user, safe for the technician, safe for the environment, safe for the machine...

Ok. How? No burnings when manipulating filters and trays, no burnings with steam thanks to the 3 steps door opening system; a stamped philosophy allowing rounded edges with less welding operations inside; less screws inside to avoid fingers damage while cleaning the tank; high water protection IPX4; safe accessibility to components for maintenance operations.



ERGONOMICS

E-VO generation has been designed to make life easier for anyone who interacts with these machines. With a natural and robust touch in its handles, comfortable spring action closing systems, stamped rounded edges parts, straight forward service accessibility to components, and much more... it assures a friendly and pleasant washing experience.

Nowadays everyone demands easy to use, easy to operate, easy to clean, easy to maintain, easy to repair... You will never experience another dishwasher as easy as EVO! Touch it. Feel it. Spread the word.

Features by range

RANGE	E-VO CONCEPT+		E-VO CONCEPT	
	HOOD-TYPE	UNDER-COUNTER	UNDER-COUNTER	GLASSWASHERS
EFFI-WASH	•	•	•	•
EFFI-RINSE	•	•	-	-
EFFI-SILENT	-	•	•	-
MULTIPOWER	-	-	•	-
SOFT-START	•	•	•	•
ECO FILL	•	•	-	-
ROCK COUNTERBALANCED DOOR	-	•	•	-
SOFT-LIFT	•	-	-	-
STAMPED PHILOSOPHY	•	•	•	-
IPX4 HUMIDITY-PROOF	•	•	•	•
MULTI-CONNECTION BOX	•	•	•	-
MULTIVOLTAGE	•	•	•	-

• Standard - Not applicable

Features vs Benefits

FEATURES	SANITATION	ECOLOGY	ECONOMY	SAFETY	ERGONOMICS	VERSATILITY & FLEXIBILITY	ROBUSTNESS, SIMPLICITY, RELIABILITY...
EFFI-WASH	•	•	•	•			
EFFI-RINSE	•	•	•	•			
EFFI-SILENT		•	•				
MULTIPOWER				•	•	•	•
SOFT-START		•	•	•			
ECO-FILL	•	•	•	•			
ROCK COUNTERBALANCED DOOR				•	•		•
SOFT-LIFT				•	•		•
STAMPED PHILOSOPHY	•			•	•	•	•
IPx4 HUMIDITY-PROOF				•			•
MULTI-CONNECTION BOX				•	•	•	

eVO CONCEPT +

Make it simple. Make it possible.

It seems impossible, but it is real. Finally there is a machine capable of gathering all the benefits and features from high-end ranges. Built in durable stainless steel with electromechanical components and simple digital controls for a user-friendly operation.

CONCEPT+ range offers a highly efficient and effective washing and rinsing system (EFFI-WASH & EFFI-RINSE) becoming the perfect solution for those locations with low pressure water network and high production requirements. **CONCEPT+** has arrived, simply possible.



*ENERGY SAVINGS

SPECIFICATIONS

Model	Hood type	Undercounter
	COP-174W	COP-504W
Dimensions (inches)	26 x 30 1/8 x 60 5/8	23 5/8 x 23 5/8 x 32 3/4
Rack size (inches)	20 x 20	20 x 20
Clearance (inches) = max ware height	17 3/8	15 1/4
Production (racks / hour)	60	37
Total Power (kW)	17.7	6.5
Wash pump (HP)	(2) 3/4	3/4
Water consumption (gallons/cycle)	0.63	0.63
Multipower	-	•
Pressure pump + air brake	•	•
Drain pump	-	•
Rinse aid dispenser	•	•
Detergent dispenser	•	•
Double skin body and door	-	•
Double wash and rinsing arms AISI-304 stainless st	•	•
IPX4	•	•
Stainless Steel tray filters on the tank	•	•
Magnetic switch for door or hood	•	•
Hot water assurance	•	•

• Standard - Not applicable

FEATURES

HOOD-TYPE

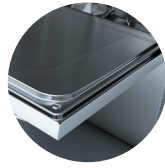


UNDERCOUNTER





01. SIMPLICITY & ROBUSTNES:
from its main "face".



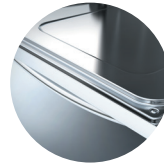
02. STAMPING PHILOSOPHY:
stamped everywhere...



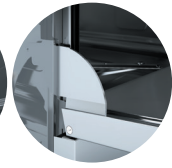
03. EFFI-WASH:
Wash efficacy and efficiency everywhere.



04. EFFI-RINSE:
Green light... Perfect rinse, perfect sanitation, simply perfect!



05. EFFI-SILENT:
Shhhhhh..... Double Skin, Rock counterbalanced door, SOFT-lift... shhhh...



COP-174W



COP-504W



07. VERSATILITY:
High clearance = High capacity.



08. MULTIPOWER:
Versatility and accessibility.

(*) Assumed daily use: 55 racks (Undercounter) and 90 racks (Hood type), 2 wash tanks. Theoretical values calculated and comparing older generation with new E-VO generation and other reference competitors from the same category.

Hood type dishwasher

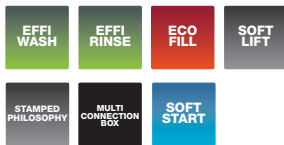
COP-174W

Specifications	COP-174W
Dimensions (inches)	26 x 30 1/8 x 60 5/8
Rack size (inches)	20 x 20
Clearance (inches) = max ware height	17 3/8
Production (racks/hour)	60
Cycles (seconds)	55 - 75 - 120
Wash pump motor (HP)	(2) 3/4
Water consumption (gallons/cycle)	0.63
Tank capacity (gallons)	9
Tank heating elements (kW)	4.5
Boiler capacity (gallons)	2.37
Boiler heating elements (kW)	12
Water pressure pump (kW)	0.26
Total power (kW)	17.7
Detergent pump	•
Rinse aid dispenser	•
Hot water assurance	•
Stainless steel tray filters on the tank	•
Magnetic switch for hood opening	•
Electronic control panel and digital display	•



COP-174W

FEATURES



STANDARD

- * 1 All purpose flat rack
- * 1 Peg rack
- * 1 Cutlery container



ACCESSORIES (*)

- * RACKS FOR DISHES
- * RACKS FOR GLASSES
- * RACKS FOR TRAYS
- * CUTLERY CONTAINERS



(*) see "Accessories" section at the end of this chapter

ELECTRONIC CONTROL PANEL



VOLTAGES

MULTIVOLTAGE: 208 V - 220 V - 240 V
1Ph - 3Ph
60 Hz

Undercounter dishwasher

COP-504W

Specifications	COP-504W
Dimensions (inches)	23 5/8 x 23 5/8 x 32 3/4
Rack size (inches)	20 x 20
Clearance (inches) = max ware height	15 1/4
Production (racks / hour)	37*
Cycles (seconds)	90 - 120 - 180
Wash pump motor (HP)	3/4
Water consumption (gallons/cycle)	0.63
Tank capacity (gallons)	5.28
Tank heating elements (kW)	2.8
Boiler capacity (gallons)	1.85
Boiler heating elements (kW)	2.8 - 3.7 - 5.6*
Water pressure pump (kW)	0.26
Total power (kW)	6.5*
Detergent pump	•
Rinse aid dispenser	•
Drain pump	•
Hot water assurance	•
Stainless steel tray filters on the tank	•
Magnetic switch for door opening	•
Electronic control panel and digital display	•

* Factory setting



COP-504W

FEATURES



EQUIPMENT

- * 1 All purpose flat rack
- * 1 Peg rack
- * 1 Cutlery container



ACCESSORIES (*)

- * RACKS FOR DISHES
- * RACKS FOR GLASSES
- * RACKS FOR TRAYS
- * BASE STAND, 16"
- * BASE STAND, 6"



(*) see "Accessories" section at the end of this chapter

ELECTRONIC CONTROL PANEL



VOLTAGES

MULTIVOLTAGE: 208 V - 220 V - 240 V
1Ph - 3Ph
60 Hz



High technology affordable for everyone.

For those who believe that technology and simplicity can go hand in hand, **E-VO CONCEPT** has landed. A winner in its category that combines features and benefits that only high-end ranges are offering, establishing a product easy to use and efficient, with the most effective and robust technology prepared for the strongest usage of the market.

SPECIFICATIONS

Model	Undercounter	Glasswasher
	CO-502W	CO-402W
Dimensions (inches)	23 5/8 x 23 5/8 x 32 3/4	18 1/2 x 20 1/2 x 28 3/8
Basket size (inches)	20 x 20	16 x 16
Clearance (inches) = max ware height	15 1/4	10 7/8
Production (racks/ hour)	30	22
Total Power (kW)	3.5	3.2
Wash pump motor (HP)	3/4	1/3
Water consumption (gallons/cycle)	0.63	0.53
Pressure gauge	•	•
Drain pump	•	•
Detergent pump	•	•
Rinse aid dispenser	•	•
Double skin body and door	•	DOOR
Double wash and rinsing arms in AISI-304 stainless steel	•	-
IPX4-Proof	•	•
Stainless steel tray filters on the tank	•	-
Magnetic switch for door or hood	•	•
Hot water assurance	•	-

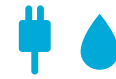
• Standard - Not applicable

FEATURES

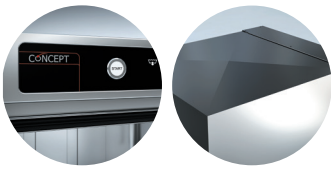
UNDERCOUNTER



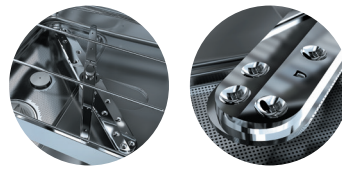
GLASSWASHER



*ENERGY SAVINGS



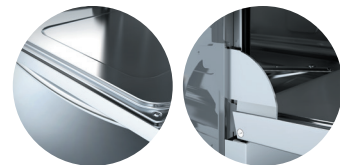
01.
SIMPLICITY & ROBUSTNES:
from its main "face".



03.
EFFI-WASH:
Wash efficacy and efficiency
everywhere.



02.
STAMPING PHILOSOPHY:
stamped everywhere...



04.
EFFI-SILENT:
Double Skin, Rock counterbalanced
door, SOFT-lift... shhhh...



05.
VERSATILITY:
High clearance = High capacity.



CO-502W

CO-402W

(*) Assumed daily use: 55 racks (Undercounter)
, 2 wash tanks. Theoretical values calculated
and comparing older generation with new E-VO
generation and other reference competitors from
the same category.

Undercounter dishwasher

CO-502W

Specifications	COP-502W
Dimensions (inches)	23 5/8 x 23 5/8 x 32 3/4
Rack size (inches)	20 x 20
Clearance (inches) = max ware height	15 1/4
Production (racks / hour)	30
Cycles (seconds)	90 - 120 - 180
Wash pump motor (HP)	3/4
Water consumption (gallons/cycle)	0.63
Tank capacity (gallons)	5.28
Tank heating elements (kW)	2.8
Boiler capacity (gallons)	1.85
Boiler heating elements (kW)	2.8
Total power (kW)	3.5
Detergent pump	•
Rinse aid dispenser	•
Pressure gauge	•
Drain pump	•
Hot water assurance	•
Stainless Steel tray filters on the tank	•
Magnetic switch for door opening	•
Electronic control panel and digital display	•



CO-502W

FEATURES



STANDARD

- * 1 All purpose flat rack
- * 1 Peg rack
- * 1 Cutlery container
- * 1 Power cord



ACCESSORIES (*)

- * RACKS FOR DISHES
- * RACKS FOR GLASSES
- * RACKS FOR TRAYS
- * CUTLERY CONTAINERS
- * BASE STAND, 16"
- * BASE STAND, 6"



(*) see "Accessories" section at the end of this chapter

ELECTRONIC CONTROL PANEL



with wash and rinse temperatures and thermostat

VOLTAGES

MULTIVOLTAGE: 208 V - 220 V - 240 V
1Ph
60 Hz

Undercounter Glasswasher

CO-402W

Specifications	CO-402W
Dimensions (inches)	18 1/2 x 20 1/2 x 28 3/8
Rack size (inches)	16 x 16
Clearance (inches) = max ware height	10 7/8
Production (racks / hour)	22
Cycles (seconds)	90 - 120 - 180
Wash pump motor (HP)	1/3
Water consumption (gallons/cycle)	0.53
Tank capacity (gallons)	3.43
Tank heating elements (kW)	2
Boiler capacity (gallons)	1.05
Boiler heating elements (kW)	2.8
Total power (kW)	3.2
Detergent pump	•
Rinse aid dispenser	•
Pressure gauge	•
Drain pump	•
Magnetic door switch	•
Cool down function	•
Electronic control panel and digital display	•



CO-402W

FEATURES



STANDARD

- * 2 All purpose flat racks
- * 1 Supplement for dishes
- * 1 Cutlery container
- * 1 Power cord



ELECTRONIC CONTROL PANEL



with wash and rinse temperatures

ACCESSORIES (*)

- * RACKS
- * SUPPLEMENTS FOR DISHES
- * COMPARTMENT DIVIDERS
- * CUTLERY CONTAINERS
- * BASE STAND, 16"
- * BASE STAND, 6"

(*) see "Accessories" section at the end of this chapter

Accessories

Stands for undercounters and glasswashers - 16" height / 6" height

Made of stainless steel.

Improve ergonomics by raising the dishwasher to a more convenient level for operation.

16" high models can be used to store the containers of detergent and rinse aid.

6" high allows for easy cleaning under the unit.

16" Models	Reference	Valid for models:	Capacity	Dimensions inch
EVPL-60	19004660	COP-504W/ CO-502W	3 racks 20"x 20"	23 5/8 x 23 5/8 x 15 3/4
EVPL-47	19031298	CO-402W	2 racks 16" x 16"	18 1/2 x 17 3/4 x 15 3/4

6" Models	Reference	Valid for models:	Dimensions inch
BSD-6	ED18101055M	COP-504W/ CO-502W	23 5/8 x 23 5/8 x 6
BSG-6	ED35010763	CO-402W	18 1/2 x 17 3/4 x 6



EVPL-60



CP-16/18



CB-7 GN



CT-10 + 6 CU



CV-16/105

Racks for undercounters and hood-type dishwashers

Made of polypropylene.

	Model	Reference	Type of rack	max inch	Capacity Product	Dimensions inch
	CT-10	19000484	ALL PURPOSE	Dishes and cutlery/glasses		20 x 20 x 4 1/3
	CB-7 GN	19031197	TRAYS	-	7	20 x 20 x 4 1/3
	CP-16/18	19000487	DISHES	Ø 9" Ø 7 1/2"	16 / 18 (*) 25 / 27 (*)	20 x 20 x 4 1/3
	CU	19000792	CUTLERY		15 (**)	4 1/6 x 4 1/6 x 5 1/8
	CV-16/155	19000489	GLASSES	Ø 4	16	20 x 20 x 7 1/2
	CV-25/155	19000492	GLASSES	Ø 4	25	20 x 20 x 7 1/2
	CV-36/155	19000495	GLASSES	Ø 4	36	20 x 20 x 7 1/2

Remarks: (*) It depends of the position of the dishes in the rack.

(**) To guarantee a correct washing of the cutlery, it is not recommended to introduce more units

Racks and dividers for glasswasher CO-402W

	Reference	Description
	12025069	ALL PURPOSE 16" x 16"
	12025030	SUPLEMENT FOR DISHES
	12025242	CUTLERY GRID
	19000792	CUTLERY CONTAINER - CU



Technical data

RANGE	E-VO CONCEPT+		E-VO CONCEPT		
	MACHINE TYPE	HOOD TYPE	UNDER COUNTER	UNDER COUNTER	GLASSWASHERS
MODEL	COP-174W	COP-504W	CO-502W	CO-402W	
Wash Cycles (seconds)	55-75-120	90-120-180	90-120-180	90-120-180	
Continuous cycle	●	-	-	-	
Electronic control panel and digital display	●	●	●	●	
Max Productivity (*)					
Racks/hour	60	37	30	22	
Dishes/hour	1500	925	750	550	
Glasses/hour	2160	1332	1080	792	
Standard Rack size (inches)	19 3/4 x 19 3/4	19 3/4 x 19 3/4	19 3/4 x 19 3/4	15 3/4 x 15 3/4	
Able for 12 x 20 pans	●	●	●	-	
Dimensions (inches)					
Width	26	23 5/8	23 5/8	18 1/2	
Depth	30 1/8	23 5/8	23 5/8	20 1/2	
Height	60 5/8	32 3/4	32 3/4	28 3/8	
Useful Loading Height (clearance)	17 3/8	15 1/4	15 1/4	10 7/8	
Open Hood Height	81 1/3	-	-	-	
Capacity (gallons)					
Wash Tank	8.98	5.4	5.4	4	
Boiler	2.37	1.85	1.85	1.05	
Water consumption per cycle	0.63	0.63	0.63	0.53	
Wash pump motor (units x HP)	(2) 3/4	3/4	3/4	1/3	
Power (kW)					
Tank heating element	4.5	2.8	2.8	2.1	
Boiler/Booster heating element	12	2.8-3.7-5.6 (**)	2.8	2.8	
Wash pump(s)	(2) 0.6	0.6	0.6	0.26	
Water pressure pump	0.26	0.26	-	-	
Total power	17.7	6.5	3.5	3.2	
Working Temperature (°F)					
Washing	150	150	150	150	
Rinsing	180	180	180	180	
Multipower	-	●	-	-	
Multitension (208-240 V/ 1-3 Ph/ 60 Hz.)	●	●	●	-	
Water Protection Rating	IPx4	IPx4	IPx4	IPx4	
Noise level (dBA)	<65	<65	<65	<70	
Rinse Aid Dispenser	●	●	●	●	
Drain Pump	-	●	●	●	
Detergent Pump	●	●	●	●	
Water Pressure Pump	●	●	-	-	
Pressure Gauge	-	-	●	●	
Double Skin Door	-	●	●	●	
Double Skin Body	-	●	●	-	
Wash & Rinse Arms - AISI-304	●	●	●	-	
AISI-304 Filter trays in the wash tank	●	●	●	-	
Hot water assurance	●	●	●	-	

● Standard - Not applicable

(*) Assumed 25 dishes and 36 glasses per 20"x 20" rack / 30 glasses per 16 x 16 rack.

(**) Factory setting

Fagor reserves all rights to modify the data included in this catalogue.

SERVICE CONNECTIONS:

- Water inlet 3/4" female hose connector on 5' long flexible hose supplied with machine. Adaptor for 3/4" female garden hose fitting also supplied. 120°-140°F optimum water temperature; 20 -25 psi flow rinse pressure.
- Drain 5' long, 1/2" I.D. flexible hose. Maximum 26 3/4" drain height permitted. Indirect connection to drain pump.



FAGOR COMMERCIAL

FAGOR COMMERCIAL INC
13105 NW 47th Ave.
Miami, FL (USA), 33054
T. +1 (305) 779 0170
F. +1 (305) 779 0173
info@fagorcommercial.com

www.fagorcommercial.com



ISO 9001



ONNERA GROUP