

INSTRUCTION MANUAL

SANDWICH GRILL - MODEL: SASL-10224-804

ATTENTION:

- PLEASE read these instructions carefully before operating this appliance.
- The temperature is thermostatically controlled between the range of 50°C to 300°C (122° F to 572°F). A signal lamp adjacent to the thermostat indicates when the heating elements are energized.

IMPORTANT:

- These units are designed to operate on alternating current (A.C.) only.
- DO NOT CONNECT TO DIRECT CURRENT (D.C.).
- Care should be taken when operating this appliance as HOT SURFACES may cause burns.
- Ensure that the power supply cord does not come into contact with hot surfaces.
- Do not leave unit in operation without an attendant.
- When not in use for long period unplug the appliance.

INSTALLATION AND OPERATION:

- Check if voltage of your power system corresponds to the same specified on the machine label.
- Before using the appliance for the first time, turn the control knob to 300°C (572°F), close the lid and allow the appliance to heat for + / - 30 minutes. You will notice smoke appearing due to the internal insulation burning, which is normal.
- After 30 minutes heating, turn temperature control down to operating desired temperature, keep knob in this position until pilot light turns off, at this point the unit will be ready to be used.
- To turn off the unit turn knob completely towards left.

CLEANING PROCEDURE

- Always ensure that the appliance is disconnected from the main power supply before cleaning.
- After appliance has cooled clean cooking surface and body using only a damp cloth. Never use water jet or immerse appliance in water.
- Wipe off appliance with a dry cloth and wait at least half an hour before re-connecting to main power outlet.

The pictures/drawings are illustrations. All data can be changed without notification.



SASL

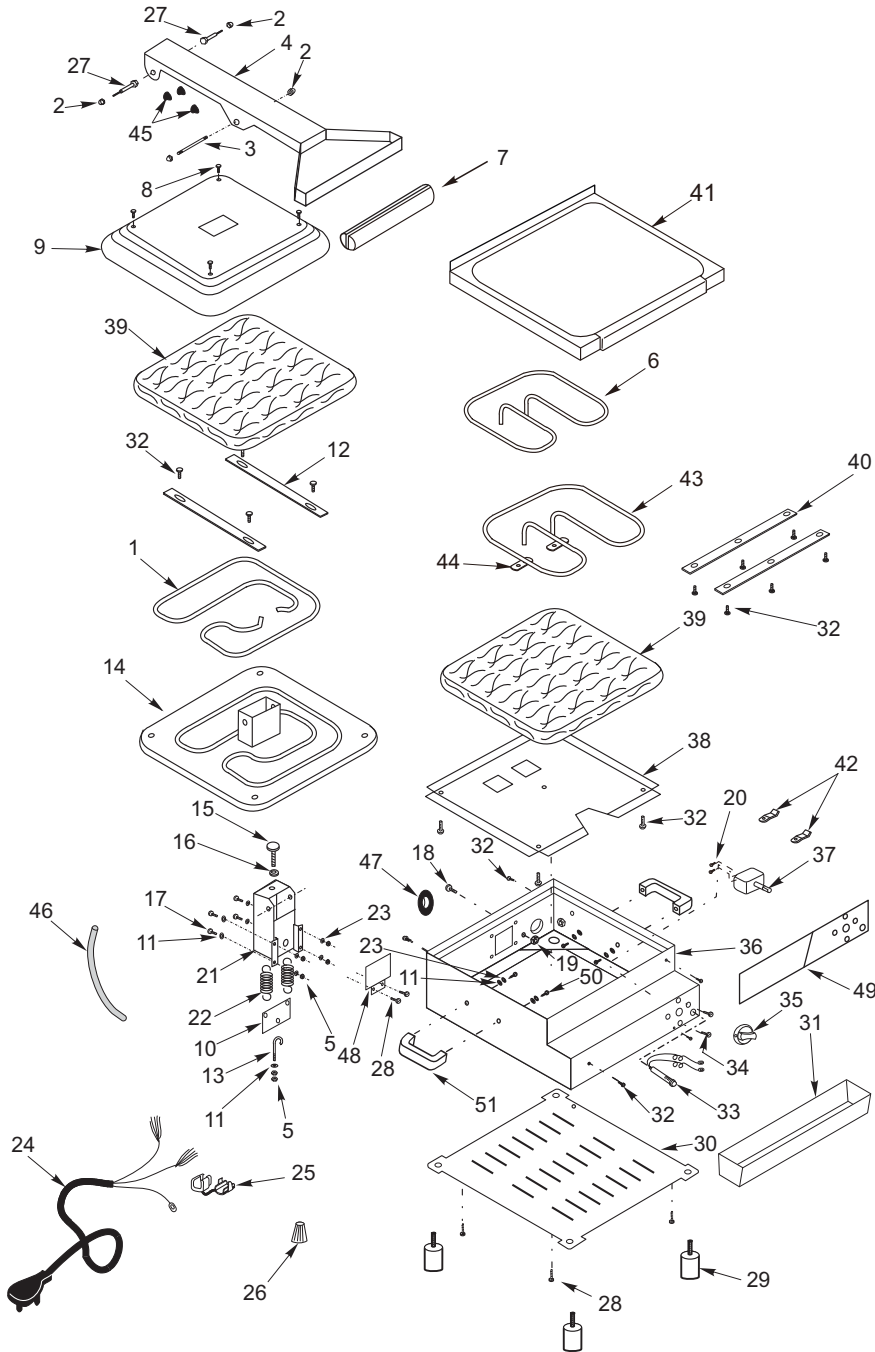
(STAINLESS STEEL ARM)



AMERICA PARTS & TOOLS, INC

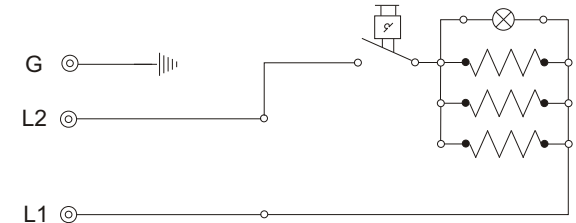
3705 NW, 115th Ave Unit 8
Doral, FL 33178
PH: +1-786-5369960
email: info@americapartstools.com

SASL-10224-804



| Item | Code | Description |
|------|----------|----------------------------------|
| 1 | 21.325-3 | Heating Element (550W) |
| 2 | 621 | Nut (1/4") |
| 3 | 2.646-3 | Shaft |
| 4 | 21.868-3 | Arm |
| 5 | 601 | Nut |
| 6 | 21.321-3 | Heating Element (450W) |
| 7 | 15.000-3 | Handle |
| 8 | 570 | Screw |
| 9 | 2.032-3 | Lid |
| 10 | 2.654-3 | Spring Support |
| 11 | 642 | Washer 1/4" |
| 12 | 2.036-3 | Heating Fixed |
| 13 | 2.631-3 | Spring Regulator |
| 14 | 40.023-3 | Upper Heating Plate |
| 15 | 2.467-3 | Lid Regulator |
| 16 | 2.466-3 | Regulator Locker |
| 17 | 332 | Screw 1/4" |
| 18 | 385 | Screw 3/16" |
| 19 | 604 | Nut 3/16" |
| 20 | 330 | Special Screw |
| 21 | 21.875-3 | Arm Support |
| 22 | 2.044-3 | Spring |
| 23 | 597 | Locker Washer (1/4") |
| 24 | 2.082-3 | Power Cord |
| 25 | 9.436-3 | Cord Retainer |
| 26 | 2.085-3 | Wire Connector |
| 27 | 15.024-3 | Shaft |
| 28 | 552 | Screw |
| 29 | 1.917-3 | Foot |
| 30 | 20.178-3 | Bottom Cover Plate |
| 31 | 1.970-3 | Grease Collector |
| 32 | 566 | Screw |
| 33 | 2.013-3 | Pilot Light |
| 34 | 329 | Screw |
| 35 | 2.009-B | Knob |
| 36 | 1.900-3 | Body |
| 37 | 2.009-3 | Thermostat |
| 38 | 2.057-3 | Heating Element Protection Plate |
| 39 | 2.073-3 | Insulation |
| 40 | 2.062-3 | Heating Element Retainer |
| 41 | 40.024-3 | Lower Heating Plate |
| 42 | 2.091-3 | Thermostat Bulb Retainer |
| 43 | 2.020-3 | Heating Element (550W) |
| 44 | 2.039-3 | Heating Element Connection |
| 45 | 2.113-3 | Rubber Protection |
| 46 | 2.604-3 | Protection Sleeve |
| 47 | 2.007-3 | Rubber Protector |
| 48 | 1.915-3 | Plate Protector |
| 49 | 20.618-3 | Label |
| 50 | 366 | Screw |
| 51 | 94.060-3 | Side Gap |

Wiring Diagram



Technical Data

| SASL-10224-804 | |
|------------------------------|-----------------------------------|
| Voltage (V) | 120 |
| Power (W) | 1,550 |
| Amperage (A) | 12.2 |
| Weight (kg/lbs) | 13.5/29.7 |
| Dimensions W x H x D (cm/in) | 33.7/13.3 x 36.3/14.3 x 49.5/19.5 |