



Features

Eco-Friendly Refrigerant

R290 refrigerant with a global warming potential (GWP) of 3

Cabinet Capacity

Internal area of 9.59ft³ with one (1) heavy-gauge wire shelf — adjustable in 1/2" increments using stainless steel pilasters

Easy to Clean

Aluminum interior with coved corners and finished edges, removable shelf, plus a top compartment crumb tray

Magnetic 'Thermo Rubber' Gaskets

Heavy-duty, stainless steel doors with magnetic Thermo Rubber gaskets ensure an airtight cabinet

Heavy-Duty Soft Casters

Secured to a 12-gauge steel base to ensure years of worry-free operation

Elevated Refrigerated Rail

Raise key ingredients closer to the crew for easy access — holds up to seven (7) 2-quart food jars

High-Efficiency Refrigeration System

Forced air circulation provides a uniform temperature throughout the cabinet

Refrigerated Countertop Compartment

Keep key ingredients always within reach — holds up to twelve (12) 3-1/2 quart food jars or ten (10) 1/6 size pans with pan adapters included

High-Strength Doors

Heavy-duty, stainless steel doors assembled using high-load brackets for long-lasting durability

Stainless Steel Exterior

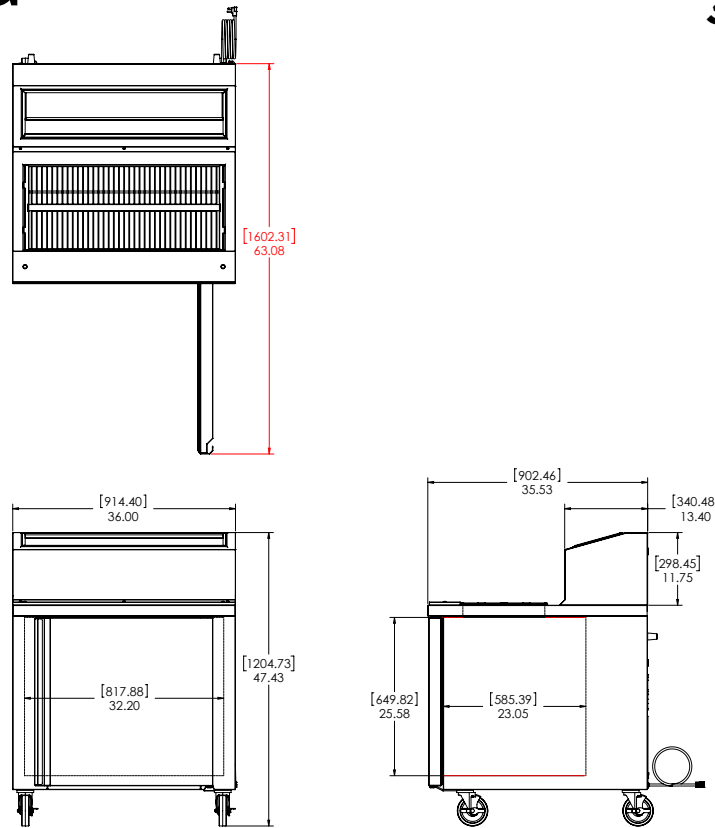
Galvanized back and bottom reduces the risk of corrosion

High-Density Insulation

Foamed-in-place, CFC-free polyurethane insulation for maximum strength, rigidity, and insulation

Cutting Board

Removable 5" polyethylene cutting board provides a large durable work surface



Technical Specifications

Electrical Requirements	115v/60hz/1ph/2.4A/NEMA 5-15P Plug
Product Dimensions	36"W x 47.43"H x 35.53"D (91.44cm x 120.47cm x 90.25cm)
Product Weight	255lbs (115.67kg)
Shipping Dimensions	41"W x 52"H x 42"D (104.14cm x 132.08cm x 106.68cm)
Shipping Weight	275lbs (124.74kg)
Shipping Cubic Dimensions	51.82ft ³ (1.47m ³)
Temperature Range	36 to 40 (2.2 to 4.4°C)
Refrigerant	R290
Insulation	Foamed-in-place, CFC-free polyurethane

Exterior Construction	Stainless steel exterior with galvanized back and bottom
Interior Construction	Aluminum interior with covered corners and finished edges
Doors	One (1) right-hand swing door
Pan Well Capacity	Twelve (12) 3-1/2 quart pans or ten (10) 1/6 size pans
Rail Capacity	Seven (7) 3-1/2 quart pans, adapters included
Internal Capacity	8.59ft ³
Rail Temperature	36 to 40°F
Door Gasket	Santoprene™
Shelves	One (1) heavy-gauge stainless steel wire shelf, removeable
Casters	Four (4) 5" heavy-duty soft casters, two (2) locking
Certifications	ETL Safety, ETL Sanitation
Warranty	1-year parts and labor, 5-year compressor (part only)

Model Number	Description
SKRN36-ESUS1	Fountainette, 36", 115v/60hz/1ph, single right-hand swing door, 5" cutting board, 5" heavy-duty casters (two locking), NEMA 5-15P

To learn more about **Silver King Refrigerator**, visit silverking.com