



Model: _____ Item #: _____ Date: _____

Project: _____ Qty: _____ Approved By: _____

Speed Multi-Stations

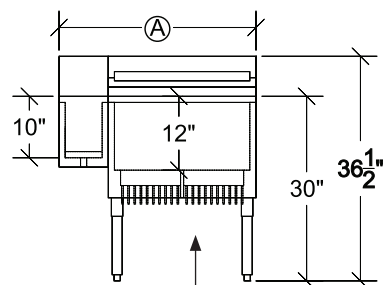
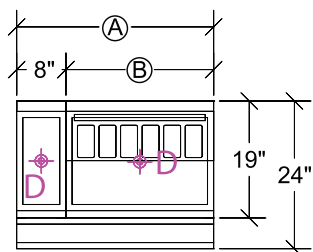
Royal Series Underbar



KR24-MS34C-7 shown

Cold Plate units supplied with 1/2" x 4" PVC tailpiece. 1/2" - 20 male threaded

Model KR-CPN4



Optional Built-In Cold Plate

Standard Features

- Removable garnish station with integrated cover
- Insulated 8" bin for storage of liquor bottles, cheater bottles, elixer bottles, etc.
- Adjustable ice bin dividers which allow for storage of different types of ice
- All multi-stations have 24" depth front-to-back
- Available on stainless legs or modular bar die
- 12" deep ice bin and insulated bin come with 1" drain (model 23-111)
- 1/2" drain (model 23-110) on ice bins with cold plates
- Built-in speed rail
- Ships as a complete station



Specifications

- Interior: 20 gauge stainless steel. 12" deep ice bin section. 10" deep bottle section
- Front Apron: 20 gauge stainless steel clad over 20 gauge galvanized steel
- Sides: 20 gauge stainless steel
- Backsplash: 20 gauge stainless steel
- Back & Bottom: 20 gauge galvanized steel

Materials

Drains & Plumbing

- 1" NPS Drain, Elixir section
- 1" IPS Drain, Ice bin
- 1/2" IPS Drain, Ice bin with Cold Plate. 4" PVC tailpiece provided. PVC tailpiece required to avoid condensation through metal to metal contact.

Cold Plate

- Cast aluminum post mix plate with 7 or 10 circuits depending on model. Plate is sealed into bottom. Each circuit is 5/16" OD stainless steel tubing. Two full with remainder to be half circuits. Bump and swedge fittings on ends.

Tubing

- 3/4" x 3-1/2" cutout in left side of backsplash (Cold Plate)

Insulation

- Foamed-in-place polyurethane

Backsplash

- 6-1/2"H x 1-1/2"D

Legs

- 1-5/8" tubular legs w/ grey plastic bullet foot

Model	Weight (lbs.)	Model with Cold Plate	Weight (lbs.)	Overall Size	Ice Bin Size	Ice Bin Location	Ice Capacity	Garnish Cups	Elixir Bottles	Liquor Bottles	Ice Bin Dividers
				(A)	(B)						
KR24-MS26R	117	KR24-MS26R-7	151	26"	18"	Right	55	5	10	7	0
KR24-MS26L	117	KR24-MS26L-7	151	26"	18"	Left	55	5	10	7	0
KR24-MS34C	163	KR24-MS34C-7	198	34"	18"	Center	55	5	20	9	0
KR24-MS32R	123	KR24-MS32R-10	218	32"	24"	Right	74	6	10	9	1
KR24-MS32L	123	KR24-MS32L-10	218	32"	24"	Left	74	6	10	9	1
KR24-MS40C	169	KR24-MS40C-10	264	40"	24"	Center	74	6	20	11	1
KR24-MS38R	138	KR24-MS38R-10	233	38"	30"	Right	92	8	10	10	2
KR24-MS38L	138	KR24-MS38L-10	233	38"	30"	Left	92	8	10	10	2
KR24-MS46C	184	KR24-MS46C-10	279	46"	30"	Center	92	8	20	13	2