



SHADOW BOX 14"

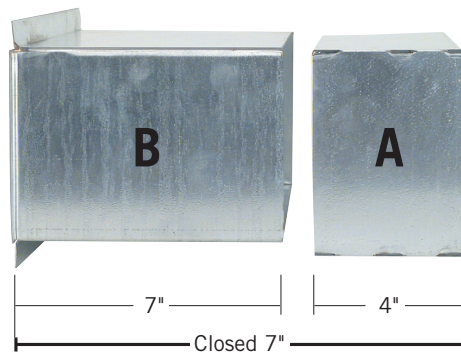
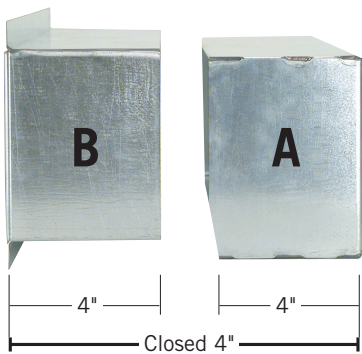
THRU-THE-WALL INSTALLATIONS

- Use to ensure beer shanks share the walk-in cooler temperature
- Covered by wall mount drip tray on the front
- Galvanized construction, easy to punch shank holes through



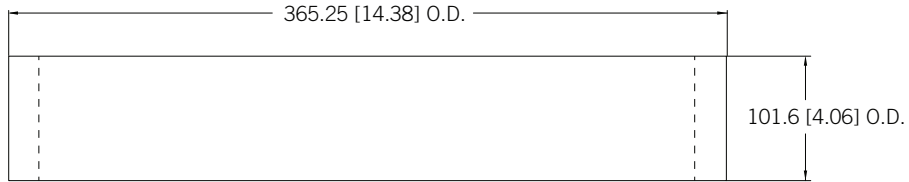
SB490L
Long Sleeve

SB490S
Short Sleeve

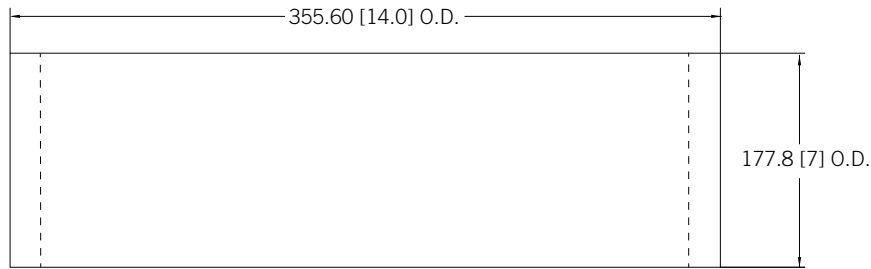


Part No.	Description	Sleeve	Length	Shipping Weight
☐ SB490L	Shadow box, galvanized	7"	14"	4 kg
				9 lbs
☐ SB490S	Shadow box, galvanized	4"	14"	3.6 kg
				8 lbs

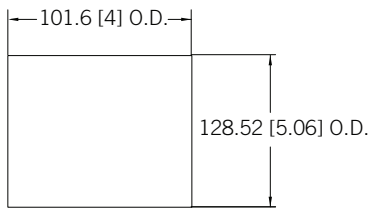
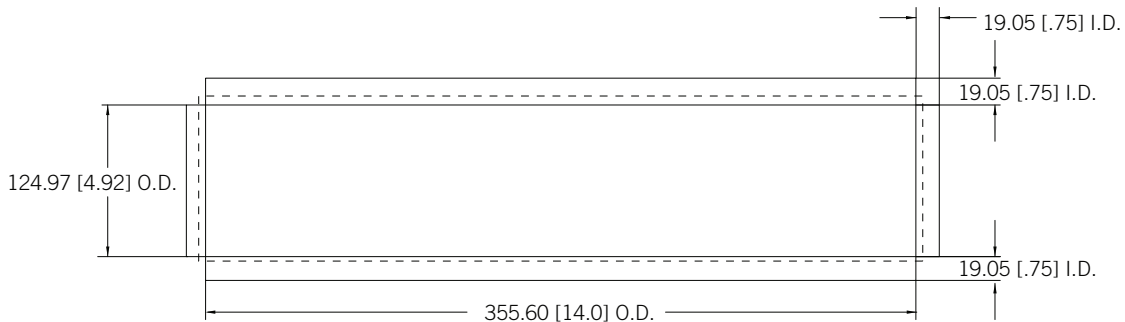
Dimensions



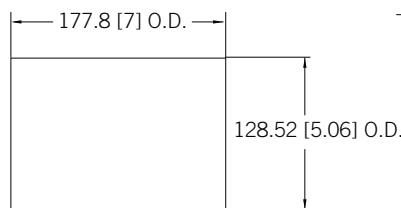
BOX



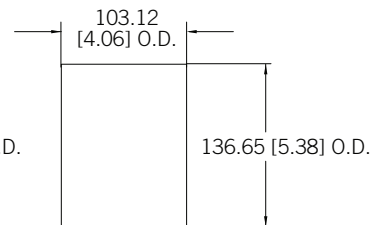
SLEEVE



SHORT SLEEVE



LONG SLEEVE



BOX