



# ROLL-IN RACK CONVECTION OVEN



**Signature Rotating Rack Oven, Gas or Electric, (2) Single Rack Capacity, (1) Double Rack Capacity, Side Loaded, Touchscreen Control, Advanced Programmable Controls, 8 Stage Baking, 99 Recipes, Front Mounted Panel, Standard Type II Hood, Variable Air Speed, Adjustable Air Flow, Reversible Door, Shot or Pulse Steam Injection, Stainless Steel Construction, NSF Certified**



PROJECT \_\_\_\_\_

ITEM NO. \_\_\_\_\_

NOTES \_\_\_\_\_

MODEL NUMBER: **SRO2E , SRO2G**



**FEATURES**

- Advanced Programmable Touchscreen Control
  - 99 Programmable Recipes
  - 8 Stage Baking
- Standard Type II Hood
- Digital Temperature Control up to 525°F (273°C)
- Rotating Rack System for Even Baking (1500 lb. capacity)
- Shot & Pulse Steam Capabilities
- Efficient Electric or Gas Heating
- Energy Saving Mode
- Advanced Moisture Evacuation System
- Interior Lights for Full Illumination

**CONSTRUCTION**

- Stainless Steel Construction
- Field Reversible Door
- Ships Knockdown or One Piece Standard
- Self Adjusting Slip Clutch on Rack
- Built in Rollers Allow for Easy Movement and Installation
- Four Adjustable Air Channels Designed for Perfect Bakes

**OPTIONS & ACCESSORIES**

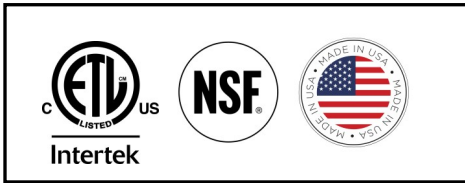
- Prison Package
- Roll-In Racks (# of Shelves: 8, 10, 12, 15 & 20)
- Water Filter

**CLEARANCES**

- 0" (0 mm) Side & Back
- 0" (0 mm) Bottom
- 36" (305 mm) Top

**WARRANTY**

- One Year Labor & Two Year Parts



Model	Crated Weight	Overall Dimensions			Interior Dimensions		
		W	D	H	W	D	H
SRO2E	1650	72"	53 3/8"	102 1/2"	40"	53"	73 1/2"
	(749)	(1828)	(1356)	(2603)	(1016)	(1346)	(1867)
SRO2G	1650	72"	53 3/8"	102 1/2"	40"	53"	73 1/2"
	(749)	(1828)	(1356)	(2603)	(1016)	(1346)	(1867)

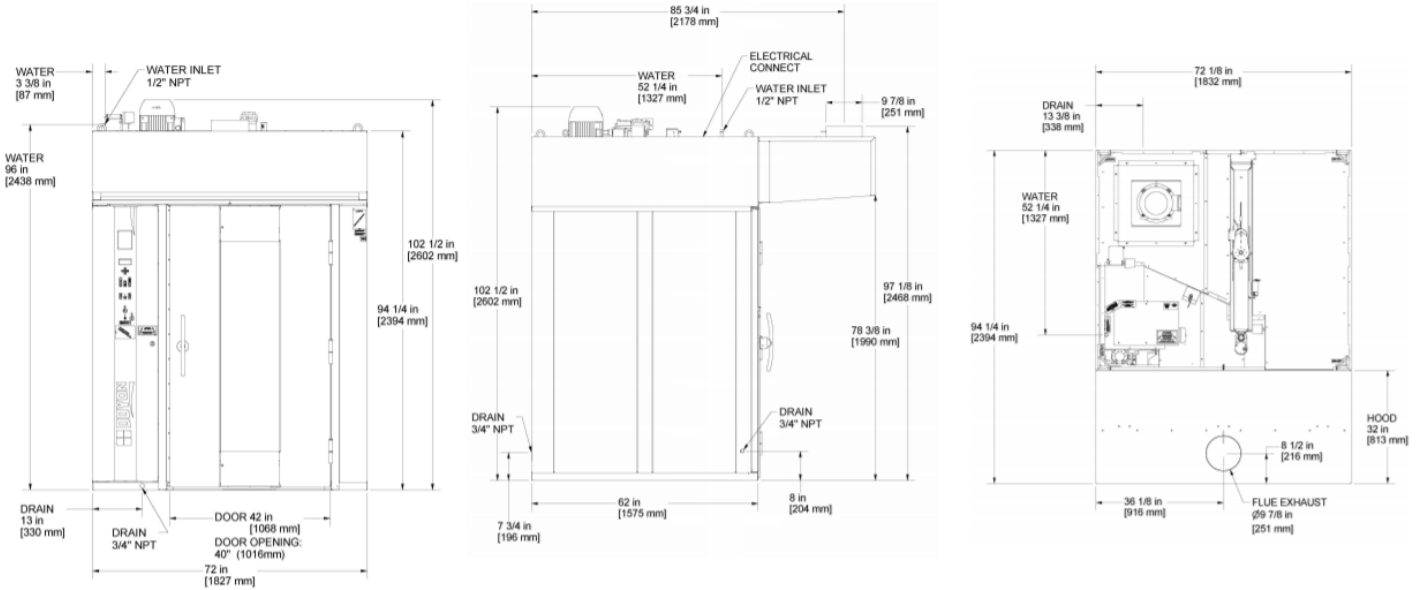




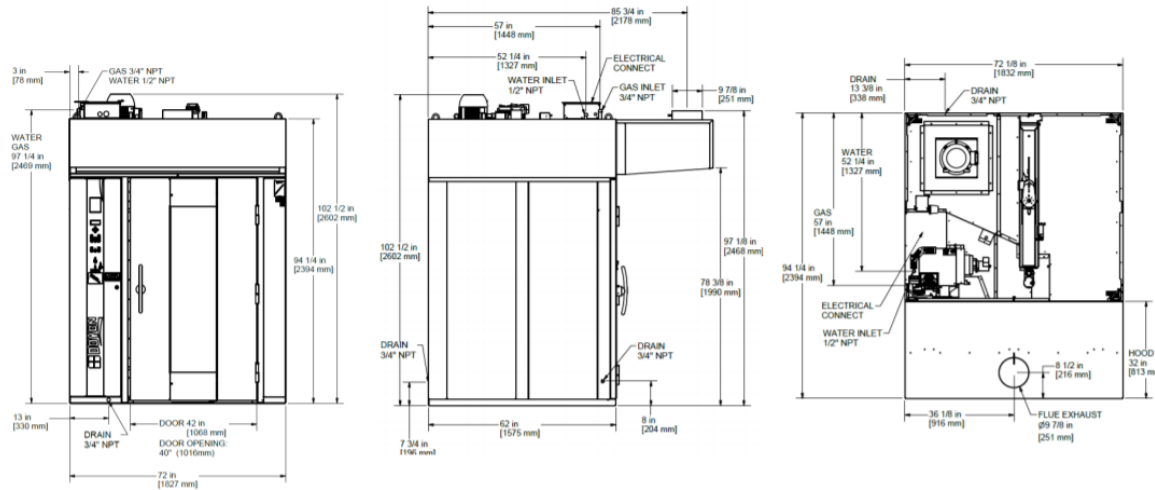
PROJECT \_\_\_\_\_  
 ITEM NO. \_\_\_\_\_  
 NOTES \_\_\_\_\_  
 MODEL NUMBER: **SRO2E, SRO2G**

**DRAWINGS**

**SRO2E**



**SRO2G**



Model	Gas System			Water Inlet	Electrical System *ground wire not included					
	BTU	D.H.	G.I.		Volts	Phases	Amps	kW	Wires*	Hz
SRO2E	-	-	-	1/2"	208	3	142	51	3	60
				(12)	240	3	123	51	3	60
					480	3	61	51	3	60
SRO2G	275,000	-	-	1/2" (12)	208/240	1	12	4	2	50/60

SPECIFICATIONS SUBJECT TO CHANGE WITHOUT NOTICE

KCL & REVIT DRAWINGS UPON REQUEST

REVISION B | 3/22/24

Follow Us



Doyon

5906 13th Street, Menominee, MI 49858

906.863.4401 | 800.338.9886 | www.doyonbaking.com