



MODULAR OPEN BURNER RANGE (18" SECTIONS)

TITAN MODULAR OPEN BURNER RANGE (18" SECTIONS)



JMRH-4



JMRH-2

MODEL NO.	DESCRIPTION
<input type="checkbox"/> JMRH-2	18" TWO OPEN BURNERS
<input type="checkbox"/> JMRH-4	36" FOUR OPEN BURNERS
<input type="checkbox"/> JMRH-8	72" EIGHT OPEN BURNERS

STANDARD FEATURES

- Individual lift-off steel top grates
- 35,000 BTU/hr cast iron open burners
- Variable size multi-point gas connection—see utility information for details
- One stainless steel pilot per burner
- 14 gauge all welded body construction
- Stainless steel gas tubing throughout
- Stainless steel front, sides, tray bed and stub back
- Stainless steel 6" plate shelf
- 3/4" gas regulator (shipped loose, must be installed for proper operation)

AVAILABLE OPTIONS

- Stainless steel high riser
- Stainless steel double high riser
- Stainless steel high shelf
- Stainless steel double high shelf
- Stainless steel tubular high shelf
- Stainless steel tubular double high shelf
- Common plate shelf with Item(s) Model(s) _____
- Cap and cover manifold. Left Right
- Floor length legs

ACCESSORIES

- 6" casters, front two locking (5" diameter wheel)
- 36" flex hose with quick disconnect (3/4" connection)
- 48" flex hose with quick disconnect (3/4" connection)
- 1" gas pressure regulator (specify gas type)
- 1-1/4" gas pressure regulator (specify gas type)



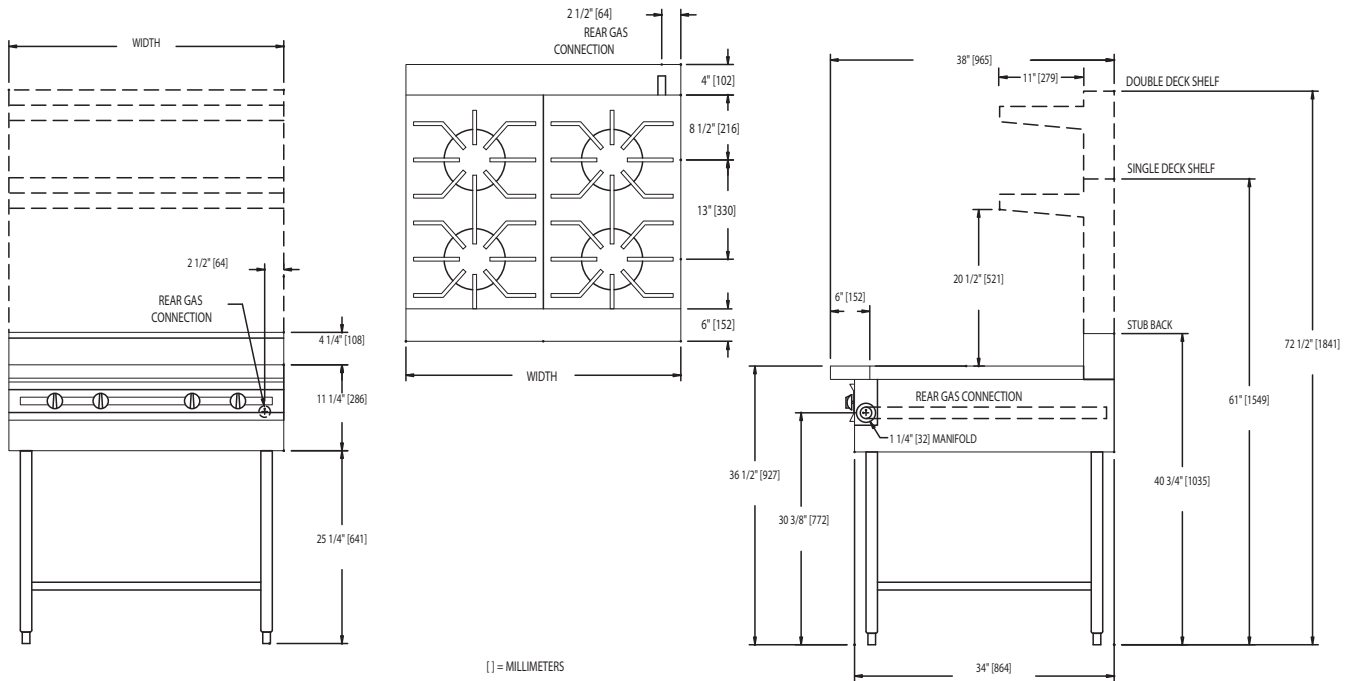
WWW.JADERANGE.COM

JADE RANGE, LLC., A MIDDLEBY COMPANY • 2650 Orbiter Street • Brea, CA 92821 • PHONE: 800-884-5233 FAX: 714-961-2550
Note: In line with their policy to continually improve products, Jade reserves the right to change materials and specifications without notice. PRINTED IN USA





MODULAR OPEN BURNER RANGE (18" SECTIONS)



MODEL	BTUS	WIDTH	DEPTH	HEIGHT	APPX. SHP. WT.
JMRH-2	70,000	18"	38"	SEE DRAWING	190 LBS.
JMRH-4	140,000	36"	38"	SEE DRAWING	395 LBS.
JMRH-8	280,000	72"	38"	SEE DRAWING	790 LBS.

DESCRIPTION:

Heavy duty modular 18" section open burner range. To be model #JMRH _____ manufactured by Jade Range. Steel top grates. Provide with (35,000 BTU/hr.) open burners controlled by infinite gas valves. To have 14 gauge all welded body with stainless steel front and sides. All gas tubing to be stainless steel throughout. To have 6" stainless steel adjustable legs.

SPECIFY TYPE OF GAS WHEN ORDERING.

SPECIFY ALTITUDE WHEN ABOVE 2,000 ft.

UTILITY INFORMATION (GAS):

- Ranges are supplied with 1-1/4" front manifold connection and a 1" or 3/4" capped rear manifold connection. For rear manifold connection, remove cap. Ranges are supplied with 3/4" gas pressure regulator. For 1-1/4" or 1" gas pressure regulator, see accessories. (Specify required front manifold cap and cover when ordering.)

- Required operating pressure:
 Natural Gas 5" W.C. minimum
 Propane Gas 10" W.C. minimum
 14" W.C. maximum

Note: This unit must be connected with the gas appliance regulator supplied.