

## Refrigeration Equipment 2-Door Refrigerated Work Top 61" Long

ITEM # \_\_\_\_\_

MODEL # \_\_\_\_\_

NAME # \_\_\_\_\_

SIS # \_\_\_\_\_

AIA # \_\_\_\_\_



738301 (KCHUCWT60R)

2-Door Refrigerated Work Top  
61" Long

### Short Form Specification

Item No. \_\_\_\_\_

2-door refrigerator counter top, with worktop, with exterior back panel, exterior bottom panel, and exterior top panel in galvanized steel, exterior side panel in 430 stainless steel; interior back, top and bottom panels in 304 stainless steel. Fin & tube condenser to improve the performances in high temperature environments. Automatic Defrost Cooling System and temperature control. Vinyl heavy duty adjustable, easy to handle and clean shelves. External temperature display.

R600a gas in refrigeration circuit.  
ETL Safety and Sanitation certified.  
3/5 Years warranty.

### Main Features

- External temperature display.
- Removable gasket for easy cleaning operations.
- Fin & Tube Condenser improves performance in high temperature environments.
- Automatic Defrost Cooling System provides worry-free performance.
- Electronic Temperature Control, quick and simple to set, with control display for easy monitoring.
- Heavy duty Vinyl coated steel shelves.
- Cabinet completely insulated with high density polyurethane for low environmental impact.

### Construction

- Self-closing door with 90-degree stay-open feature.
- Heavy duty casters.
- Pre-wired heavy duty power cord.
- Heavy duty door hinges.
- Magnetic gasket removable without tools for easy cleaning.

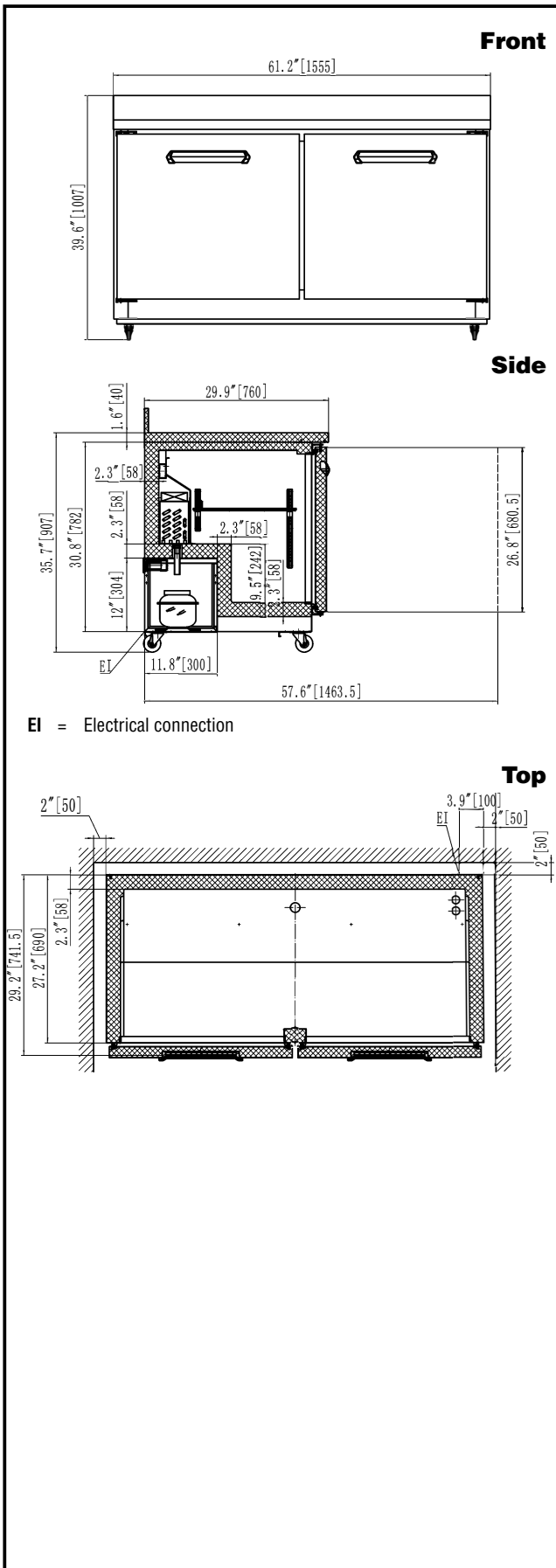
### Sustainability

- High efficiency components to minimize the energy consumption still guaranteeing the highest performances.
- CFC and HCFC free (ecological refrigerant type: R600a).

### Optional Accessories

- 1 ADJUSTABLE FOOT PNC 206445
- Drawer Kit for 60" Mega Top & Undercounter PNC 880617

APPROVAL: \_\_\_\_\_



## Electric

<b>Supply voltage:</b>	738301 (KCHUCWT60R)	115 V/1 ph/60 Hz
<b>Electrical power, max:</b>		0.31 kW
<b>Plug type:</b>		USA NEMA 5-15P

## Key Information:

<b>Door hinges:</b>	1 Left+1 Right
<b>Capacity:</b>	15.5 cu.ft.
<b>External dimensions, Width:</b>	61 1/4" (1555 mm)
<b>External dimensions, Depth:</b>	29 15/16" (760 mm)
<b>External dimensions, Height:</b>	39 5/8" (1007 mm)
<b>Number and type of doors:</b>	2 Full
<b>Internal Dimensions (depth):</b>	24 13/16" / (630 mm)
<b>Internal Dimensions (height):</b>	24 7/16" / (620 mm)
<b>Internal Dimensions (width):</b>	55 1/8" / (1400 mm)
<b>Shipping height:</b>	42 1/8" (1070 mm)
<b>Shipping weight:</b>	311 lbs (141 kg)
<b>Shipping volume:</b>	48.21 ft <sup>3</sup> (1.37 m <sup>3</sup> )
<b>Number and type of grids (included):</b>	2 - Vinyl-Coated Steel
<b>Type of external material:</b>	Stainless Steel
<b>Type of internal material:</b>	Polystyrene
<b>Warranty:</b>	3 / 5 years
<b>Approvals</b>	ENERGY STAR;ETL C&US;ETL SANITATION

## Refrigeration Data

<b>Compressor power:</b>	1/8 hp
<b>Operating temperature min.:</b>	32 °F
<b>Operating temperature max.:</b>	41 °F
<b>Condenser type:</b>	Fin & tube
<b>Defrost type:</b>	Auto Defrost

## Sustainability

<b>Current consumption:</b>	3 Amps
<b>Refrigerant type:</b>	R600a
<b>Refrigerant weight:</b>	80 g

