







SW78

Pot & Pan Washer

-  24 racks per hour | 39 pans per rack
-  Fully automatic operation with power on/off button
-  Hold down rack system for secure washing
-  Timed wash and rinse cycles

STANDARD FEATURES

- Wash tank heat: electric, gas, steam injection or steam coil
- Pressure regulator
- Single point electrical connection
- Low water cut-off
- Door safety switch
- Power on/off switch
- Power-on light (amber)
- Automatic fill
- Three position wash selector (Complete cycle times): Light (260 seconds), Medium (380 seconds), Heavy (500 seconds)
- Cycle start button
- Emergency cycle stop button
- Digital temperature controller for wash and rinse
- Pan washer clean-up hose and spray gun
- Detergent connection provision
- Pit or floor model
- Pressure regulator to maintain 20 psi rinse flow
- SureFire® Start-Up & Check-Out Service

OPTIONS

- Stainless steel steam coil tank heat
- Rack assortment: general utility, bake sheet, utensil basket
- Steam booster
- Electric booster
- Security package
- Totally enclosed motor
- Recommended option: power vent fan



SPECIFICATIONS

Capacity	Racks Per Hour	24
	Sheet Pans Per Hour	936
Heating & Venting	Wash Tank Heat	9 kW (3)
	Rinse Booster Heat	9 kW (3)
	Exhaust Hood Requirement	12" Steam Exhaust Vent
Water	Water Inlet Temperature	110°F
	Water Consumption (20 PSI)	311 gal/hr
	Wash Tank Capacity	160 gal
	Peak Drain Flow	16 gal/min
Steam	Steam Tank Consumption (Injected, 10-15 PSI)	125 lbs/hr
	Steam Tank Consumption (Coil, 10-15 PSI)	125 lbs/hr
Gas	BTUH Capacity	190,000
	Natural Gas Consumption (7" W.C. Minute)	186 CFH
	Propane Consumption (11" W.C. Minute)	78 CFH
Other	Wash Motor HP	25
	Shipping Weight	2500 lbs

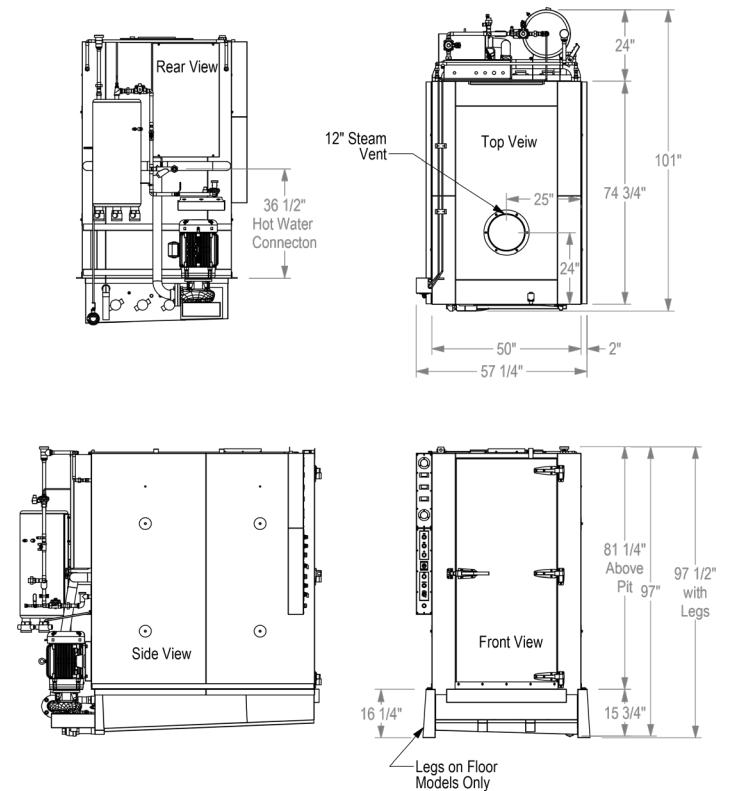
ELECTRICAL

		Electric	Steam	Gas
Electrical Options	208/60/3	216 amps	66.0 amps	144 amps
	230/60/3	195 amps	59.0 amps	129 amps
	460/60/3	98.1 amps	30.3 amps	64.4 amps

PROJECT BUILD FORM

Project Name	
Project Manager	
Configuration	Electric <input type="checkbox"/>
	Steam <input type="checkbox"/>
	Gas <input type="checkbox"/>
Electrical	208/60/3 <input type="checkbox"/>
	230/60/3 <input type="checkbox"/>
	460/60/3 <input type="checkbox"/>
Approval (Please Check One)	Approved <input type="checkbox"/>
	Approved as Noted <input type="checkbox"/>
	Rejected <input type="checkbox"/>
Signature	Date
Internal Info	Serial Number
	Configuration Code

TECHNICAL DRAWING



Contact Insinger Sales at 800-344-4802 for an installation drawing specific to your application.

Note: Due to product improvement we reserve the right to change information and specifications without notice.