



Profit from the Eagle Advantage®

# Specification Sheet

## Short Form Specifications

Eagle Hand Sink, model HSA-10-FTWS. Constructed of type 304 stainless steel all-welded with deep-drawn positive drain sink bowl, basket drain, inverted "V" edge to prevent spillage, tubular mounting brackets, and splash mounted gooseneck faucet.



#HSA-10-FTWS

## Options / Accessories

- P-trap
- Tail piece
- End splashes
- Side mount wall bracket
- Soap & towel dispenser
- MICROGARD® antimicrobial protection

**EAGLE GROUP**  
 100 Industrial Boulevard, Clayton, DE 19938-8903 USA  
 Phone: 302-653-3000 • Fax: 302-653-2065  
 www.eaglegrp.com

**Foodservice Division: Phone 800-441-8440**  
**MHC/Retail Display Divisions: Phone 800-637-5100**

For custom configuration or fabrication needs, contact our **SpecFAB® Division**.  
 Phone: 302-653-3000 • Fax: 302-653-2065 • e-mail: quotes@eaglegrp.com

Item No.: \_\_\_\_\_  
 Project No.: \_\_\_\_\_  
 S.I.S. No.: \_\_\_\_\_

# Hand Sink\* with Tubular Wall Support

**MODEL:**  
 **HSA-10-FTWS**

## Design & Construction Features

- Type 304 stainless steel construction.
- Inverted "V" edge rim retards spillage.
- All-welded construction.
- Positive drain bowl.
- One-piece, deep-drawn, seamless bowl.
- 1" (25mm)-diameter tubular wall brackets included for added strength.
- Includes 1½" (38mm) NPS stainless steel basket drain and splash mounted gooseneck faucet.
- Water inlet: ½" (13mm) NPS.

\* Non-electric. We offer sinks with electric soap dispenser and faucets.



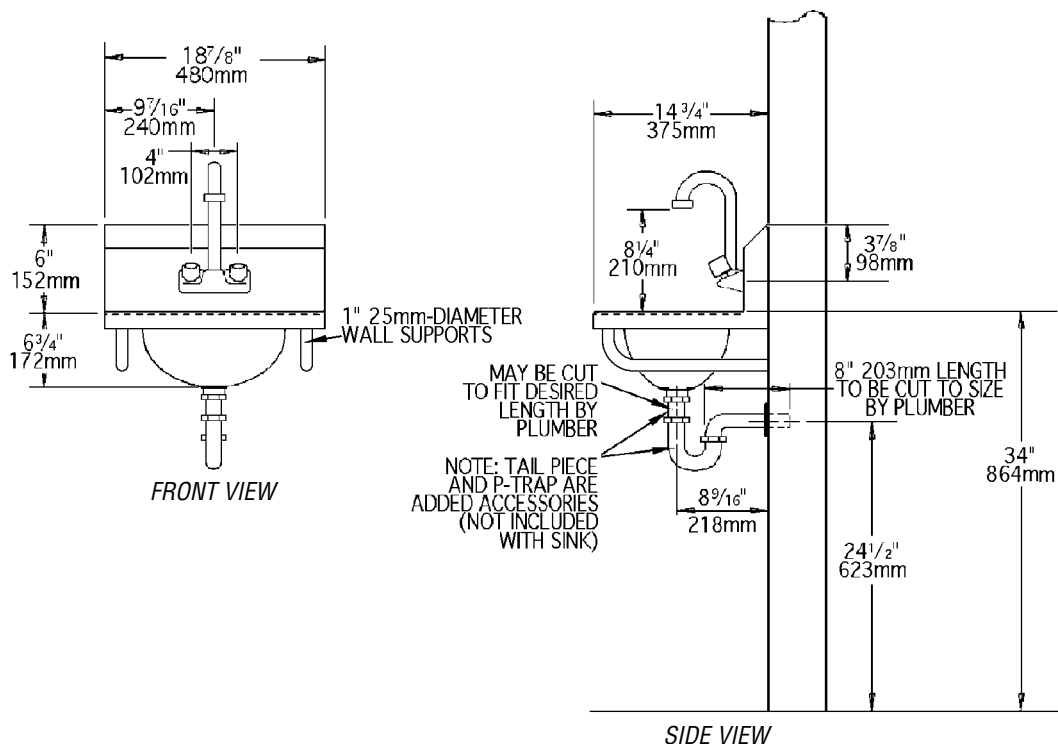
**Spec sheets available for viewing, printing or downloading from our online literature library at [www.eaglegrp.com](http://www.eaglegrp.com)**



Profit from the Eagle Advantage®

Item No.: \_\_\_\_\_  
 Project No.: \_\_\_\_\_  
 S.I.S. No.: \_\_\_\_\_

# Hand Sink with Tubular Wall Support



model #	bowl size			overall size			weight							
	width	length	depth	width	length	height	lbs.	kg						
	in.		mm	in.		mm								
HSA-10-FTWS	9 3/4"	13 1/2"	6 3/4"	248	343	173	14 3/4"	18 7/8"	12 3/4"	376	480	324	20	9.0

**EAGLE GROUP**  
 100 Industrial Boulevard, Clayton, DE 19938-8903 USA  
 Phone: 302-653-3000 • Fax: 302-653-2065  
 www.eaglegrp.com

Foodservice Division: Phone 800-441-8440  
 MHC/Retail Display Divisions: Phone 800-637-5100

Printed in U.S.A.  
 ©2018 by Eagle Group  
 Rev. 09/18

Spec sheets available for viewing, printing or downloading from our online literature library at [www.eaglegrp.com](http://www.eaglegrp.com)

Although every attempt has been made to ensure the accuracy of the information provided, we cannot be held responsible for typographical or printing errors. Information and specifications are subject to change without notice. Please confirm at time of order.