



# BEVERAGE-AIR®

Project: _____	AIA#
Item: _____	
Location: _____	SIS#
Approved: _____	

**DW64HC DEEP WELL SERIES: HORIZONTAL BOTTLE COOLERS**

## HORIZONTAL BOTTLE COOLERS

### DW64HC Frosty Brew Deep Well Series

### Hydrocarbon Series



**MODEL:**  
**DW64HC-B-29**



**7 Year Parts/Labor Warranty**  
**7 Year Compressor Warranty**

#### CABINET CONSTRUCTION

- Stainless steel exterior
- Galvanized steel interior and floor
- Full electronic control
- Tops include easy glide, stainless steel lids (2)
- Stainless steel countertop with integral glass stops
- Four (4) epoxy coated adjustable wire dividers
- Bottle opener and cap catcher standard
- Constructed with high cooling RPM fans to provide fast cooling

#### OPTIONS & ACCESSORIES

- Stainless steel interior
- Wire divider
- Lid locks
- 3" Casters or 6" adjustable leg with plate
- Remote option\* (see note on back on page)

#### REFRIGERATION SYSTEM

- Refrigeration system uses R290 refrigerant to comply with all environmental concerns
- Automatic, non-electric defrost
- Epoxy coated evaporator coil
- Forced air refrigeration system holds product between 30°-32°F



Please verify qualifying units by visiting:  
[www.energystar.gov/cfs](http://www.energystar.gov/cfs)

3779 Champion Blvd., Winston-Salem, NC 27105  
1-888-845-9800 Fax: 1-336-245-6453  
Beverage-Air.com Sales@bevair.com



# BEVERAGE-AIR

MODEL	DW64HC-S-29
<b>EXTERNAL DIMENSIONAL DATA</b>	
Width Overall	65"
Depth Overall	26 1/2"
Depth Overall with Cap Catcher	27 3/4"
Height Overall	33 3/4"
Number of Lids	2
<b>INTERNAL DIMENSIONAL DATA</b>	
NET Capacity (cubic ft.)	18.5
Internal Width Overall (in)	61"
Internal Depth Overall (in)	22 3/4"
Internal Height Overall at Step (in)	15 1/2"
Internal Height Overall (in)	26 3/4"
Number of Dividers	4
12 oz. Bottle Capacity	25 1/4 Cases
12 oz. Can Capacity	34 3/4 Cases
<b>ELECTRICAL DATA</b>	
Full Load Amperes	2.5
<b>REFRIGERATION DATA</b>	
Horsepower	1/4
Capacity (BTU/Hr)	1702
Heat Rejection (BTU/Hr)	2553
Charge (lbs/grams/ounces)	0.2314 / 105 / 3.71
<b>SHIPPING DATA</b>	
Gross Weight - Crated	332 lbs
Height - Crated	41"
Width - Crated	68"
Depth - Crated	30"

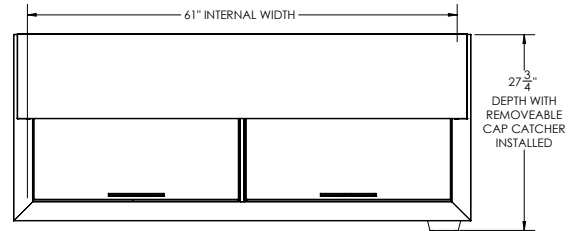
\*NOTE: Remote units are field wired and come with 6" legs.  
Refrigerant must be specified at time of order.

We reserve the right to change specifications and product design without notice. Such revisions do not entitle the buyer to corresponding changes, improvements, additions or replacements for previously purchased equipment. Dimensional tolerances +/- 1/4". Metric dimensions (MM).

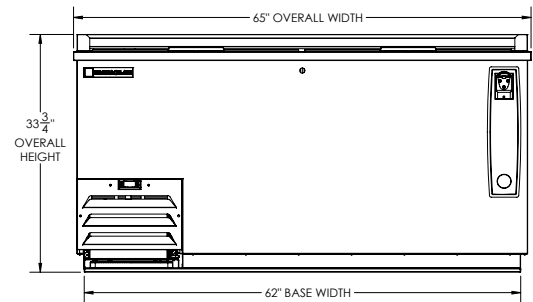
## FROSTY BREW Horizontal Bottle Coolers - Deep Well Model: DW64HC-S-29

### Model Views

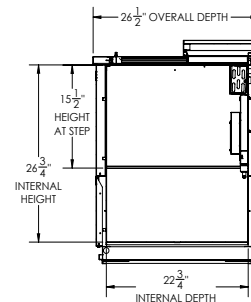
Required Clearance: 3" Sides & Rear



### PLAN VIEW



### ELEVATION VIEW



### SIDE VIEW



### ELECTRICAL CONNECTION



115/60/1  
NEMA 5-15P

Unit pre-wired at factory and include 8' long cord and plug set.