

MAXIMIZER

Gas Pizza Ovens

MODEL CW51P

General Features:

- **Quality Construction** for long life
- **Stainless Steel Front Standard**
Stainless top & sides available (T430)
- **Pizza Deck Standard**
Large 42"x32"x12" compartment
1" pizza stone
- **Center Wire Rack (optional)**
- **4-Cell "Power-Pak" Burner System** for better distribution of heat and better baking ability
- **Thermostat**
300° F - 650° F (149°C -343°C)
- **Space Saver**
Only 50" wide
- **Stackable**
Multiple options for flexibility
- **Aluminized Interior Standard**
- **Easily Serviceable**
Most controls can be replaced from the front of the unit
- **Power**
Gas - LP or NAT
- **Specific Features** of the CW51P listed on back

Warranty:

- One year parts and labor

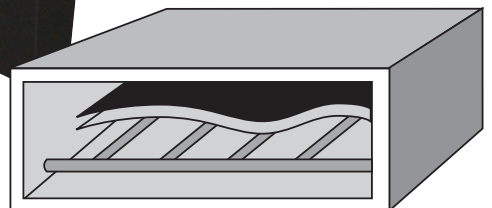


GAS FIRED



Pizza Deck / Wire rack optional

Hearth
Baffle
Burner



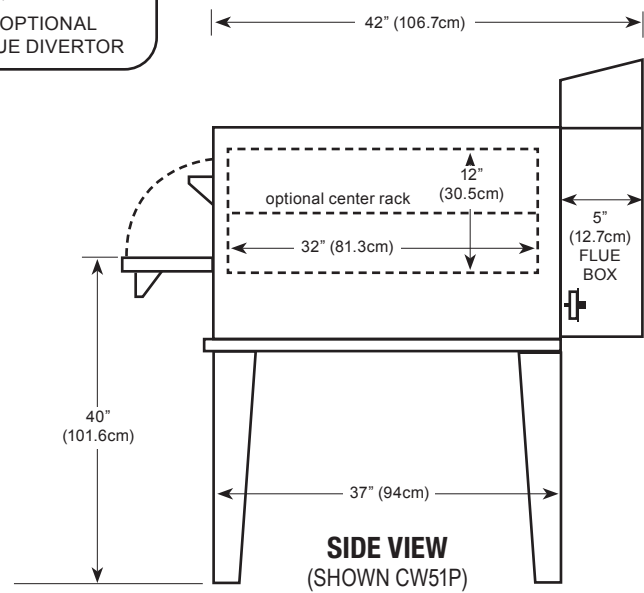
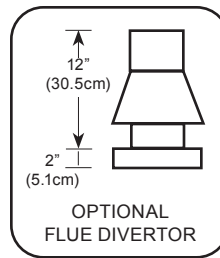
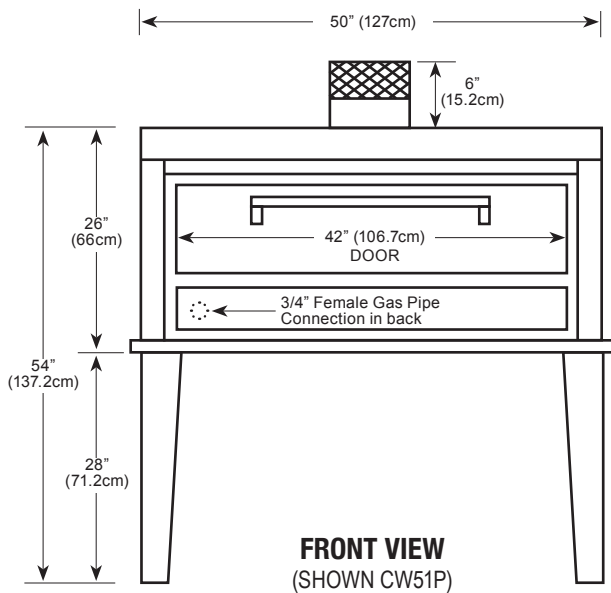
"Power-Pak" 4-Cell Burner System

MORE FOR LESS

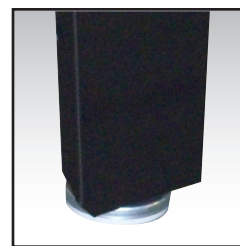
- More Cooking Space per Floor Space
- More Cooking Capacity per Sales Dollar
- More Performance per Gas Dollar



P.O. Box 859 • Sandusky, Ohio 44870 • (419) 625-4514 • FAX 625-4597



Floor space	50" (127cm) wide x 42" (106.7cm) deep x 54" (137.2cm) high
Shelf size	42" (106.7cm) wide x 32" (81.3cm) deep x 12" (30.5cm) high
Shipping weight	525 lbs (238kg)
Capacity	Six 12" (30.5cm) pizzas or four 16" (40.7cm) pizzas
Gas	Maximum 60,000 BTU input
Opening required for installation: 25" * Handle adds 2.5" (6.4cm) to depth	



Adjustable Legs

Durable Construction

The CW51P is built with *prime 20-gauge cold-rolled top and sides* with a 14-gauge base. The interior is made of *Armco Type 1, 20-gauge aluminized steel*. The CW51P comes standard with stainless steel front, or optional all stainless steel finish. The stainless steel is made of high quality, 18-gauge 430 stainless; the door interior is 18 gauge stainless.

Energy Efficiency

The CW51P features our *new energy-saving "Power-Pak" 4-cell burner system* and our *unique baffle system*. These make our ovens highly efficient and eliminate hot spots. The *heavily insulated walls*, coupled with our *special vent system*, reduces heat loss and keep your gas dollars from going up the stack. The CW51P is powered by 60,000 highly efficient BTUs which *increases its efficiency and recovery rate*.

Capacity

The CW51P deck size measures 42"x32"x12". Actual cooking capacity depends on the size of the pizza you are cooking. The CW51P will hold six (6) 12" pizzas or four (4) 16" pizzas. Cooking time will vary according to product, but will average between 8-10 minutes.

Space Saver

Because the controls are under the door, the CW51P requires *less installation space* than our competition. This enables you to free up valuable kitchen and/or hood space. The actual width needed is a mere 50" for a *42"x32" deck*, almost a foot less than the competition. The CW51P *can convert into a CW52P by stacking*, either initially or after your business grows. This option gives you two 42"x32" decks in only 50" of space.

Design Plus

The CW51P has the *controls in lower front for ease of operation and space savings*. This also places the controls in their own *air-conditioned area* so they are not affected by outside influences. In addition, the CW51P is *totally thermocoupled* and allows you to replace individual parts as opposed to throwing away the whole system.



P.O. Box 859 • Sandusky, Ohio 44870 • (419) 625-4514 • FAX 625-4597