



# BEVERAGE-AIR

Project: _____	AIA#
Item: _____	
Location: _____	SIS#
Approved: _____	

**CT96HC COUNTERTOP REFRIGERATOR**

## COUNTERTOP MERCHANDISER SERIES

### CT96HC Countertop Refrigerator

**MODEL:**  
CT96HC-1-B



**1 Year Parts/Labor Warranty**

#### CABINET CONSTRUCTION

- Exterior is heavy duty black textured steel
- Interior is heavy duty white epoxy coated steel
- Black plastic door frames
- Full electronic control with display
- LED lighting
- Double pane tempered glass door
- Door lock
- Three (3) epoxy coated shelves
- 2 Top shelves are adjustable
- 6' Cord and plug set included

#### OPTIONS & ACCESSORIES

- Custom Graphics
- Wire Shelves

#### REFRIGERATION SYSTEM

- Refrigeration system uses R600a refrigerant to comply with all environmental concerns
- Automatic, non-electric defrost
- Epoxy coated evaporator coil
- Maintains product temperature between 36°F and 38°F



  
Please verify qualifying units by visiting:  
[www.energystar.gov/cfs](http://www.energystar.gov/cfs)

3779 Champion Blvd., Winston-Salem, NC 27105  
1-888-845-9800 Fax: 1-336-245-6453  
Beverage-Air.com Sales@bevair.com



# BEVERAGE-AIR

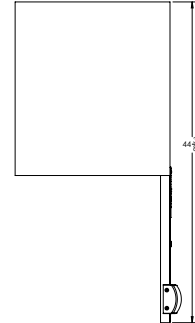
MODEL	CT96HC-1-B
<b>EXTERNAL DIMENSIONAL DATA</b>	
Width Overall	21 <sup>3</sup> / <sub>8</sub> "
Depth Overall	25 <sup>1</sup> / <sub>2</sub> "
Height Overall	37 <sup>1</sup> / <sub>2</sub> "
Number of Doors	1
Depth with Door Open 90°	44 <sup>3</sup> / <sub>8</sub> "
Door Opening (in)	18" x 31 <sup>1</sup> / <sub>4</sub> "
<b>INTERNAL DIMENSIONAL DATA</b>	
NET Capacity (cubic ft.)	5.9
Internal Width Overall (in)	18 <sup>1</sup> / <sub>4</sub> "
Internal Depth Useable (in)	Upper 19 <sup>1</sup> / <sub>8</sub> " Lower 12 <sup>1</sup> / <sub>4</sub> "
Internal Height Overall (in)	31 <sup>5</sup> / <sub>8</sub> "
Internal Height Useable (in)	24 <sup>1</sup> / <sub>8</sub> "
Number of Shelves	3
<b>ELECTRICAL DATA</b>	
Full Load Amperes 115/60/1	1.3
<b>REFRIGERATION DATA</b>	
Horsepower	1/5
<b>WEIGHT DATA</b>	
Gross Weight	125 lbs
Height - Crated	45"
Width - Crated	24"
Depth - Crated	27"

We reserve the right to change specifications and product design without notice. Such revisions do not entitle the buyer to corresponding changes, improvements, additions or replacements for previously purchased equipment. Dimensional tolerances +/- .1/4". Metric dimensions (MM).

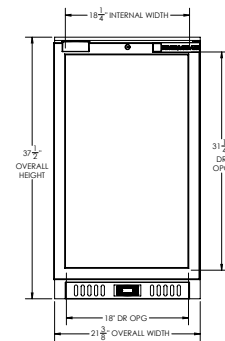
## Countertop Refrigerator Model: CT96HC-1-B

### Model Views

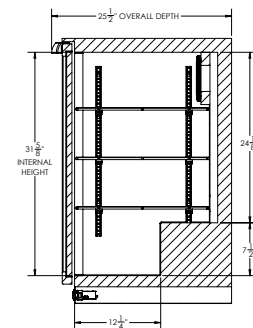
Required Clearance: 3" Rear



### PLAN VIEW



### ELEVATION VIEW



### SIDE VIEW

### ELECTRICAL CONNECTION



115/60/1  
NEMA 5-15P

Unit pre-wired at factory and include 6' long cord and plug set.



3779 Champion Blvd., Winston-Salem, NC 27105 1-888-845-9800 Fax: 1-336-245-6453 Beverage-Air.com Sales@bevoir.com

