



Model: \_\_\_\_\_ Item #: \_\_\_\_\_ Date: \_\_\_\_\_

Project: \_\_\_\_\_ Qty: \_\_\_\_\_ Approved By: \_\_\_\_\_

## Drainboard Corner Fillers

Royal Series Underbar

### Standard Features

- Designed to mount between two adjacent underbar units for bars that have inside or outside turns
- Can be mounted to adjacent stable surfaces
- Removable stainless perforated top with hemmed edges and welded corners

### Optional Accessories

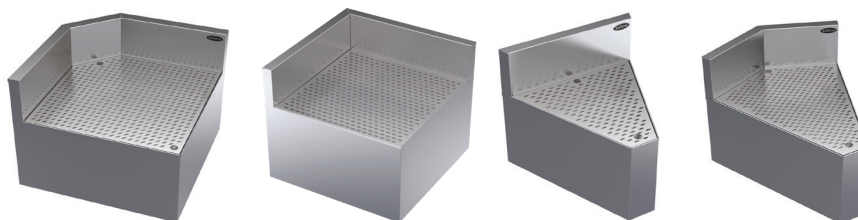
Model	Description
KR-204	3-1/2" Round Cutout
KR-702	Leg and Side Support
KR-704	Cutout with Chase (specify location)

### Specifications

- Drainboard**
- 20 gauge embossed stainless steel reinforced with welded braces every 6"
  - 3/4" radius on all vertical and horizontal edges
  - Includes perforated insert
- Material**
- Front Apron: 20 gauge stainless steel
  - Top: 20 gauge stainless steel
  - Backsplash: 20 gauge stainless steel clad over 20 gauge galvanized steel
- Plumbing**
- 1" IPS Drain Connection

### Rear Corner Drainboards

Model	Description	Wgt. (lbs.)
KR24-DR90	90° Straight Corner	65
KR24-DRC90	90° Full Corner	65
KR24-DR45	45° Straight Corner	55
KR24-DRC45	45° Angled Corner	55

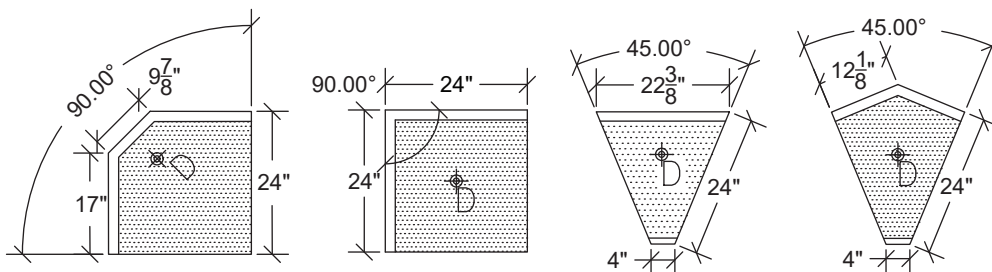


KR24-DRC90

KR24-DR90

KR24-DR45

KR24-DRC45

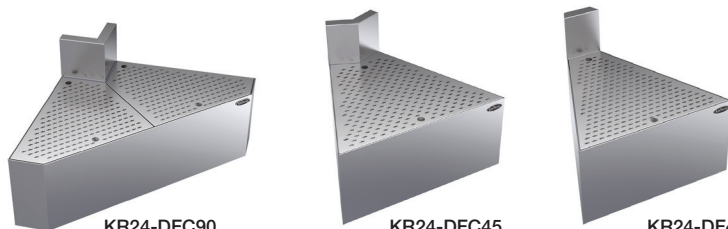


**NOTE**

Royal Drainboard Fillers are built to order and cannot be returned.

### Front Corner Drainboards

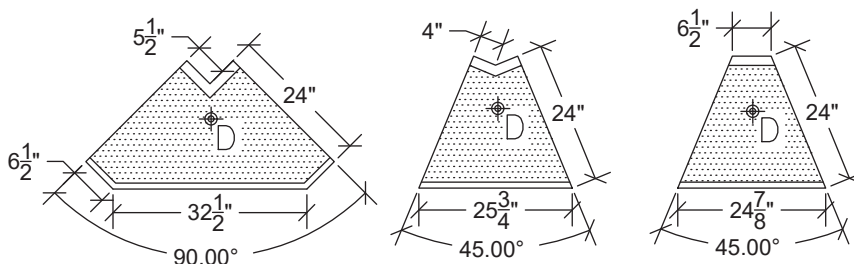
Model	Description	Wgt. (lbs.)
KR24-DFC90	90° Full Corner	65
KR24-DF45	45° Straight Corner	55
KR24-DFC45	45° Angled Corner	55



KR24-DFC90

KR24-DFC45

KR24-DF45



**NOTE**

Royal Drainboard Fillers are built to order and cannot be returned.

