

|         |          |         |
|---------|----------|---------|
| PROJECT | QUANTITY | ITEM NO |
|---------|----------|---------|

# Fryer Oil Disposal Shuttle

**ODS 310**



The unappealing job of draining, transporting and disposing of spent frying oil becomes much easier with the Henny Penny ODS 310 oil disposal shuttle.

Simply roll out the fryer filter pan, roll in the ODS 310 and drain. No tilting, stooping or lifting involved. A hinged lid latches shut to form a tight seal around the drain pan, preventing spills during transport. The load is easily transported on two large 7 in (178 mm) rear wheels.

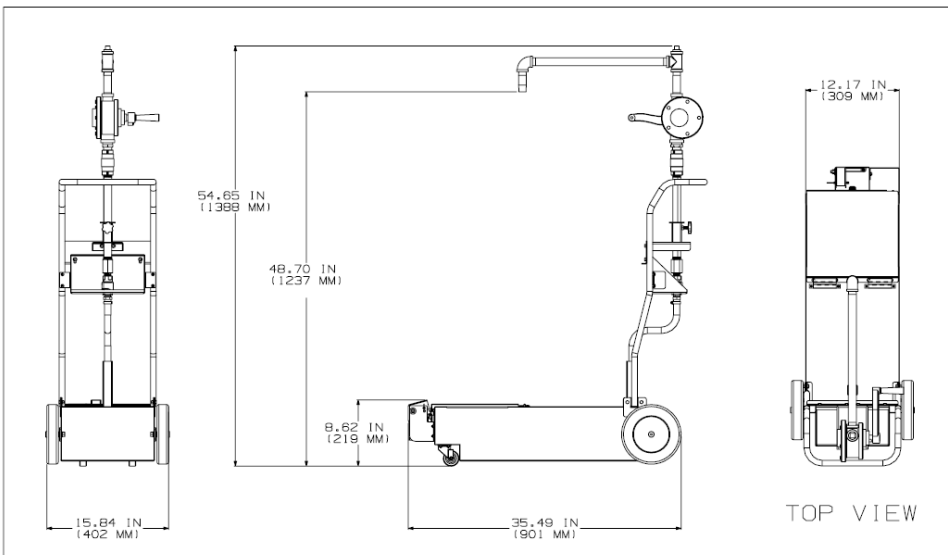
A rotatable discharge pipe swings out to either side for convenient disposal. Manual pump is located at the ideal height, making pump out fast and easy.

## Standard Features

- Powerful manual pump empties 50 lb (23 kg) of oil in less than a minute
- Low profile, 8 in (203 mm) pan height allows unit to roll under nearly any compatible fryer for direct draining
- Check valve insures consistent pump priming
- Rotatable discharge pipe swings at height to clear most containers
- Easy-grip retainer screw locks swing pipe into any convenient position
- Hinged drain pan lid latches closed over perimeter seal to prevent spills
- Swivel casters in front, large 7 in (178 mm) rear wheels for smooth, stable transport
- 2-year parts/1-year labor warranty

## Options

- 60 in (1524 mm) drain hose with connection



## Dimensions

|                     |                   |
|---------------------|-------------------|
| Width               | 15.84 in (402mm)  |
| Width drain pan     | 12.17 in (309 mm) |
| Depth               | 35.49 in (901mm)  |
| Height              | 54.65 in (1388mm) |
| Height to discharge | 48.70 in (1237mm) |
| Height drain pan    | 8.62 in (219 mm)  |

## Crated

|        |  |
|--------|--|
| Length | 30 in (762 mm)                             |
| Depth  | 21 in (533 mm)                             |
| Height | 20 in (508 mm)                             |
| Volume | 7.3 ft <sup>3</sup> (0.20 m <sup>3</sup> ) |
| Weight | 62 lb (28 kg)                              |

## Oil capacity

|               |
|---------------|
| 50 lb (23 kg) |
|---------------|

\*ODS310 Compatible with EEE14X, EEG24X, LVE20X, LVG20X and LVE30X products.

Continuing product improvement may subject specifications to change without notice.

**24 Hour Technical Support:**  
Henny Penny Technical Service  
800 417.8405  
[technicalservices@hennypenny.com](mailto:technicalservices@hennypenny.com)

**Henny Penny Corporation**  
PO Box 60 Eaton OH 45320 USA  
+1 937 456.8400 800 417.8417  
+1 937 456.8434 Fax 800 417.8434 Fax  
[www.hennypenny.com](http://www.hennypenny.com)



