



STAINLESS STEEL
HAND SINKS
SPECIAL PURPOSE

Conforms To NSF 61/9 Lead Free Requirements



7-PS-72



7-PS-64



Includes
Tailpiece
and P-Trap

7-PS-57



7-PS-747
CLASS 2 SECURITY
INSTALLATION



7-PS-727
CLASS 1 SECURITY
INSTALLATION

Item #: _____ Qty #: _____
 Model #: _____
 Project #: _____

FEATURES:

One piece **Deep Drawn** sink bowl design.
 Sink bowl is 10" x 14" x 5".
 All sink bowls have a large liberal radii with a minimum dimension of 2" and are rectangular in design for increased capacity.
 3-1/2" Stainless steel basket drain (7-PS-57 includes strainer plate).
 Splash mounted 4" O.C. gooseneck faucet furnished with aerator.

Additional Model Features:

7-PS-57 features side support brackets, 8" O.C. splash mounted gooseneck faucet, tailpiece, P-trap.
7-PS-64 features tubular support brackets.
7-PS-72 is H.A.C.C.P. Compliant hand sink featuring slow, self-closing, metering faucet with mixing valve.
7-PS-727 Unit totally enclosed. Bottom security panel provides access for installation and services. Vandal Proof Aerators. All fasteners are stainless steel tamper proof. Concealed drain. Heavy duty gooseneck faucet. Towel dispenser with hinged towel box with lock. Unit uses standard C-fold towels. Liquid Soap dispenser.
7-PS-747 Unit totally enclosed. Bottom security panel provides access for installation and services. Vandal Proof Aerators. All fasteners are stainless steel tamper proof. Concealed drain. Heavy duty gooseneck faucet.

CONSTRUCTION:

All TIG welded.
 Welded areas blended to match adjacent surfaces and to a satin finish.
 Die formed Countertop Edge with a 3/8" No-Drip offset.
 One sheet of stainless steel - No Seams.

MATERIAL:

Heavy gauge type 304 series stainless steel.
 Wall mounting bracket is galvanized and of offset design.
 All fittings are brass / chrome plated unless otherwise indicated.

MECHANICAL:

Faucet supply is 1/2" IPS male thread hot and cold.
 Drain is 1-1/2" IPS.
Faucet Flow Rate: 1.0 GPM/3.8 LPM aerator. 60 PSI.

⚠ WARNING:
 Equipment that includes a faucet may expose you to chemicals, including lead, that are known to the State of California to cause cancer or birth defects or other reproductive harm. For more Info., visit www.p65warnings.ca.gov.



Customer Service Available To Assist You **1-800-645-3166** 8:30 am - 7:00 pm E.S.T.

For Orders & Customer Service:

Email: customer@advancetabco.com or Fax: 631-242-6900

For Smart Fabrication™ Quotes:

Email: smartfab@advancetabco.com or Fax: 631-586-2933

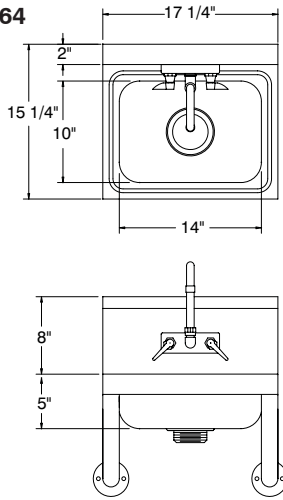
DIMENSIONS and SPECIFICATIONS

TOL Overall: ± .500" Interior: ± .250"

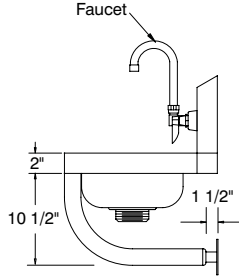
FITTINGS SUPPLIED AS SHOWN

ALL DIMENSIONS ARE TYPICAL

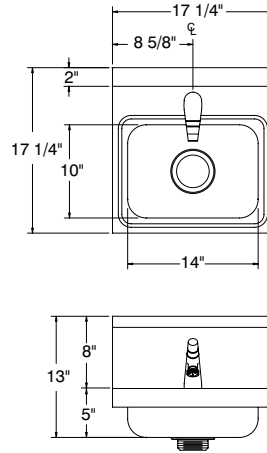
7-PS-64



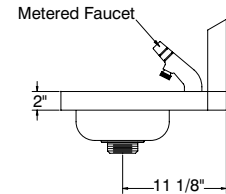
25 lbs.



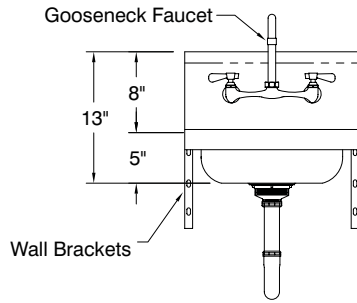
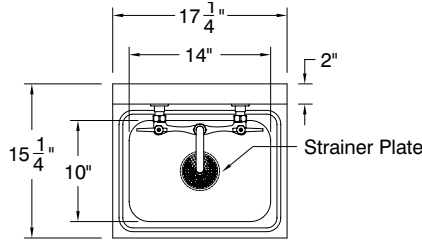
7-PS-72



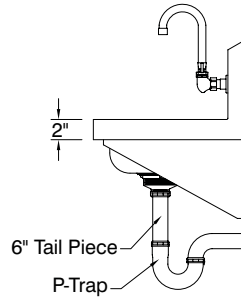
15 lbs.



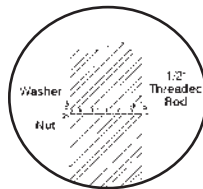
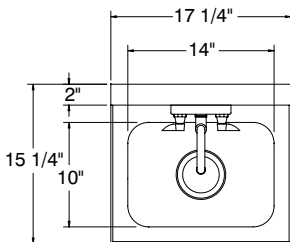
7-PS-57



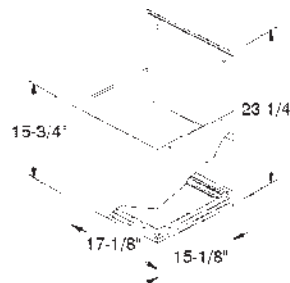
25 lbs.



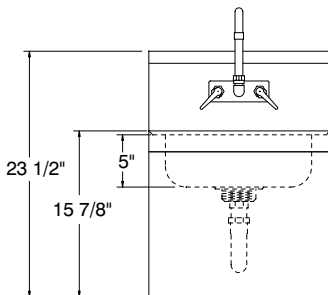
7-PS-747



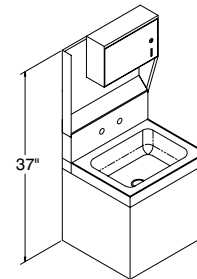
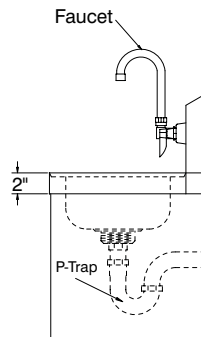
Mounting Detail



Security Skirt Enclosure



45 lbs.



7-PS-727 Unit with Towel Dispenser

