

Power Loader and Unloader

- Labor and space saving
- Dishroom operates at peak efficiency
- May be used independently or in combination with each other
- Unique design allows for use around columns and in difficult areas
- Eliminates cumbersome, space consuming curved rollers
- Can add several feet of work space at the clean end by utilizing an additional wall
- Innovative design gives flexibility of right-to-left or left-to-right application
- Can be loaded or unloaded at a 90° angle
- Adaptable to all Insinger rack conveyor dishwashers
- Designed for left or right hand application as specified
- Can give you the option of using a small rack conveyor instead of a single tank corner style machine
- Optional limit switch at end of clean table shuts down conveyor when clean racks accumulate

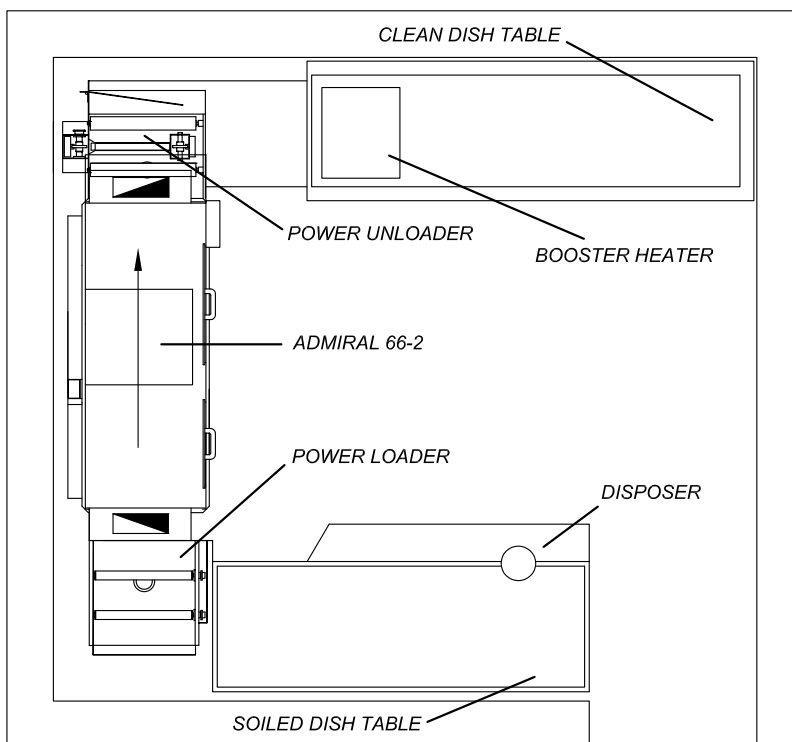


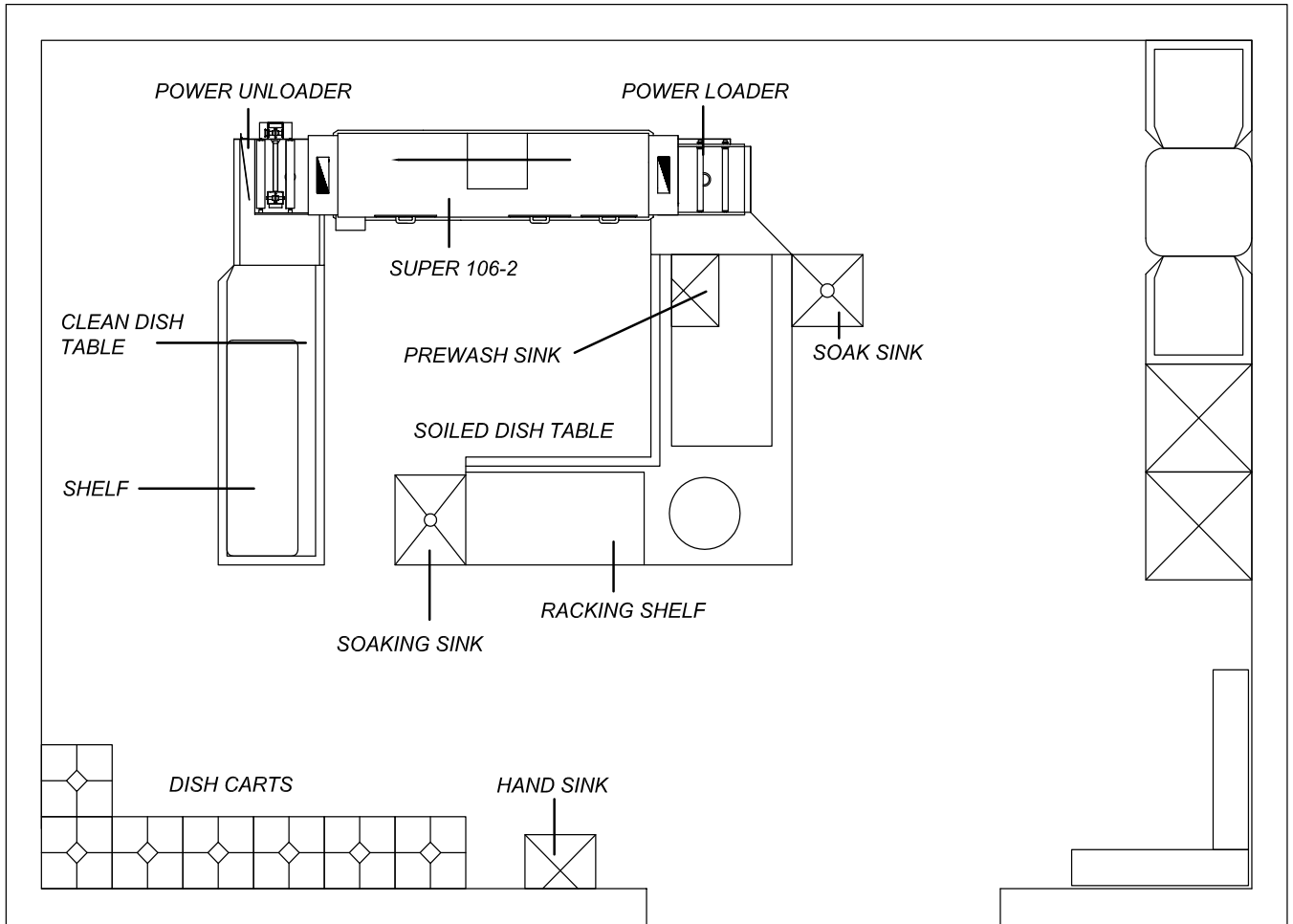
STANDARD FEATURES

- Dedicated motor, independent of the warewasher

OPTIONS

- Limit switch





SPECIFICATIONS

CAPACITY- Capacity varies with the size of the dishwasher used. Maximum capacity is 330 20" x 20" racks per hour. Will accommodate 22" long trays in an open end rack.

DESIGN- Can be used in both right-to-left and left-to-right operations. Loader and Unloader can each be used independently or in combination with each other.

CONSTRUCTION- Pan constructed of 16 gauge type 304 18-8 stainless steel with all welded construction. Both Loader and Unloader are furnished with a 10" back-splash and a 1 1/2" rim roll. All moving parts with the exception of the pusher and rollers are covered with a stainless steel panel.

Note: Due to product improvement we reserve the right to change information and specifications without notice.

OPERATION-

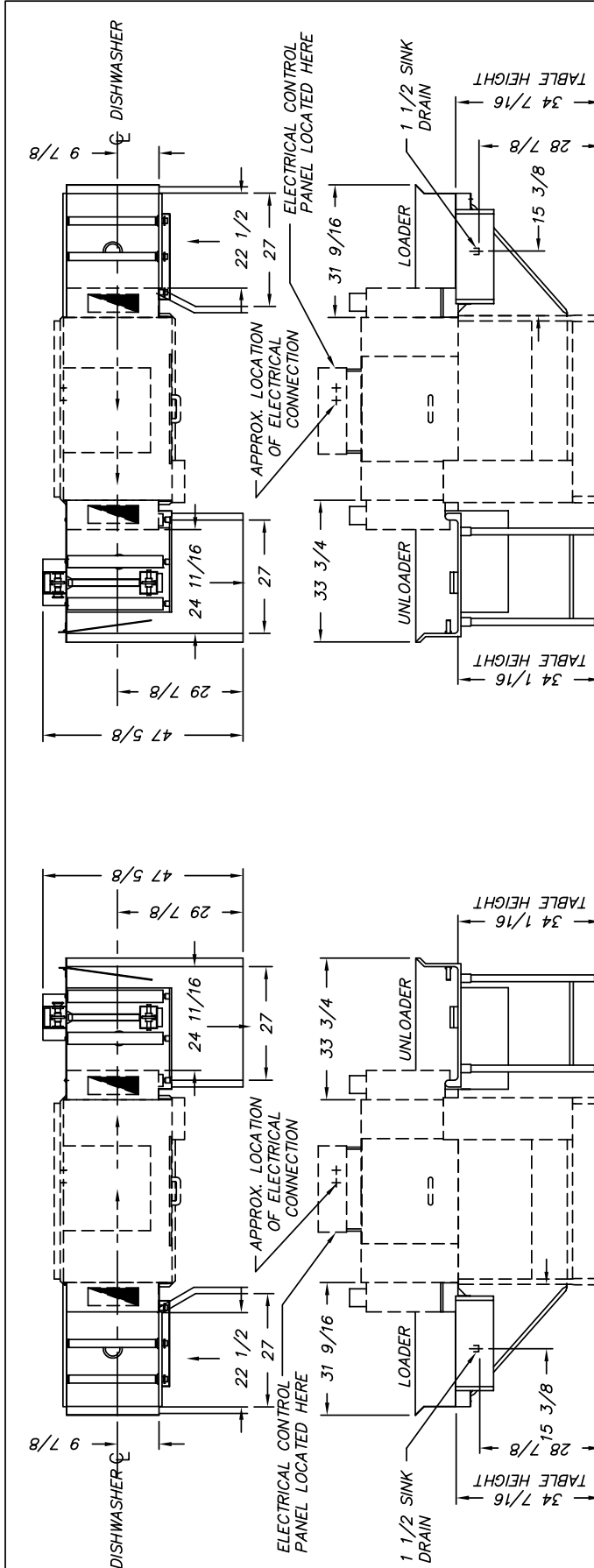
Power Loader- 3 powered rollers with an operating speed of 10 surface feet per minute. Rollers powered by a chain drive operated by a 1/3 hp motor and reduction gear combination.

Power Unloader- 3 powered rollers with an operating speed of 10 surface feet per minute plus a simultaneously timed rack ejector. Rollers powered by a chain drive operated by a 1/15 hp motor. Ejector powered by a 1/4 hp motor through a reduction gear and sprockets protected by a safety clutch to deliver a stroke of 15-20 feet per minute. Stroke is fast enough to push the clean dish rack out and reposition the ejector to receive the next rack as it exits the dishwasher.

MOTORS- 1/3 hp motor furnished with Power Loader. 1/4 hp and 1/5 hp motors furnished with Power Unloader. Motors are standard frame, internally fan-cooled with ball bearing construction.

DRAIN- Drain for Unloader is connected to machine.

Capacity Per Hour	Capacity varies with the size of the dishwasher used. Maximum capacity is 330 20" x 20" racks/hour.	Current Draw Amps	Load	Unload
Shipping Weight		208/3/60	1.7	1.7
		220/1/60	3.4	4.1
		240/3/60	1.5	1.6
Loader	100 lbs.	480/3/60	0.8	0.9
Unloader	375 lbs.	380/3/50	0.9	1.0

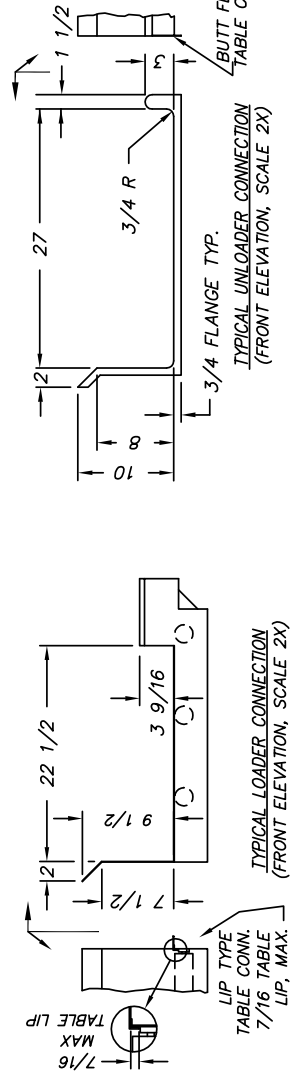


RIGHT TO LEFT FEED

LEFT TO RIGHT FEED

NOTES:
 1. ELECTRIC CONNECTION SHOWN ABOVE IS FOR ALL MOTORS ONLY. ELECTRIC TANK HEATERS AND BOOSTER REQUIRE SEPERATE CONNECTIONS.

REF: SK-4841
 COPY LOADER / UNLOADER TO CURRENT UNIT IN STANDARD DRAWING.



THE INFORMATION ON THIS DRAWING IS THE PROPERTY OF INSINGER MACHINE COMPANY AND IS NOT TO BE REPRODUCED OR TRANSMITTED IN ANY FORM OR BY ANY MEANS, INCLUDING BUT NOT LIMITED TO ELECTRONIC, MECHANICAL, PHOTOCOPYING, RECORDING, OR BY ANY INFORMATION FOR USE IN ANY SYSTEM, WITHOUT THE WRITTEN PERMISSION OF INSINGER MACHINE COMPANY. INSINGER MACHINE COMPANY SHALL BE LIABLE FOR ANY DAMAGES, INCLUDING REASONABLE ATTORNEY'S FEES, INCURRED BY ANY PARTY AS A RESULT OF THE NEGLIGENCE OF INSINGER MACHINE COMPANY'S LEGAL COUNSEL.	
Insinger TYPICAL INSTALLATION (COMMERCIAL)	
Philadelphia, PA 19135 (215) 624-4800 FAX (215) 624-6966	SCALE 1/2" = 1' DWG. NO. LDR-UNL E
DRWN: PG REV: PI	1:13.00 04.08.07
POWER LOADER AND UNLOADER	FILE: STD\LDR-UNL