



341

Frozen Uncarbonated Beverage Freezer

Single Flavor

Features

Vary your menu by offering smoothies or frozen cocktails, fruit juices, coffees, cappuccino, and tea slush beverages, all served at the desired thickness.

Freezing Cylinder

One, 7 quart (6.6 liter).

Mix Hopper

One, 20 quart (18.9 liter). Optional refrigerated hopper approved for dairy products.

Indicator Light

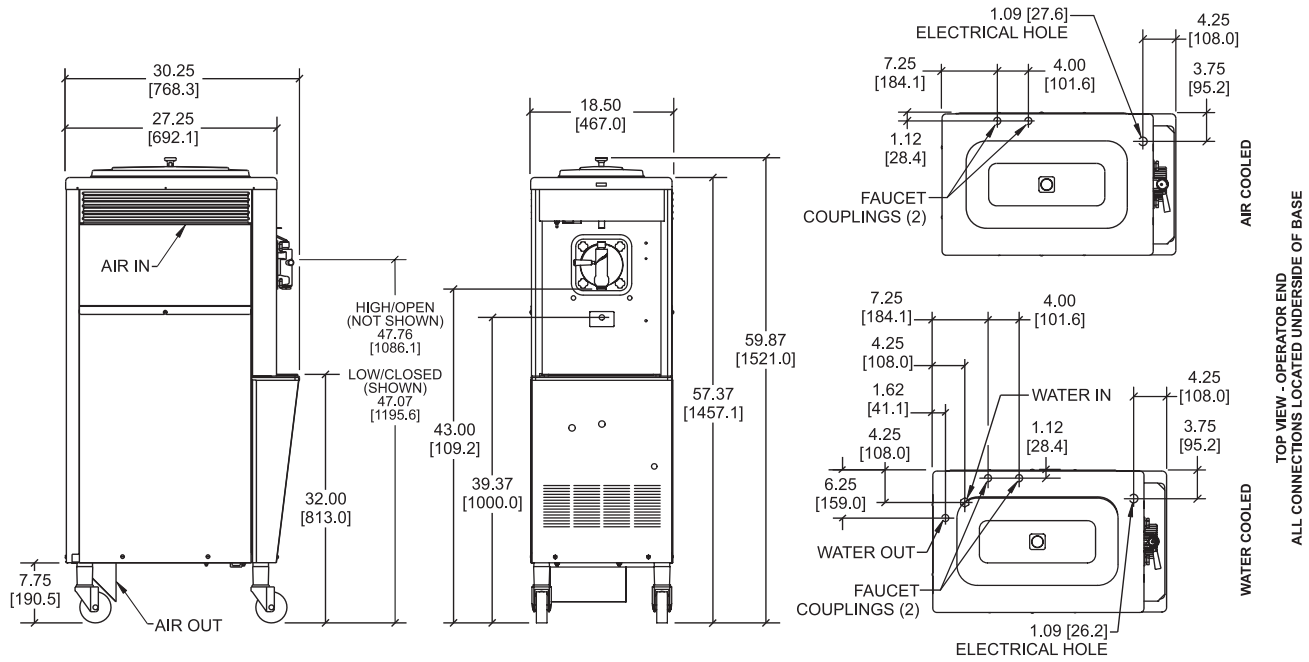
Add Mix light alerts the operator to add mix.

Automatic Consistency Control

A specially designed viscosity control automatically maintains superior product quality. Adjustable control allows the operator to serve a wide variety of frozen beverages at the desired thickness.

Two Locking Casters

Front casters have a locking feature for operators to keep equipment in place. The locking casters can be released to move the equipment for cleaning.



FIGURES IN BRACKETS INDICATE MILLIMETERS / DECIMAL AND FRACTIONAL DIMENSIONS EQUAL TO (PLUS OR MINUS 1/16 INCH [1.5mm]).

Weights	lbs.	kgs.
Net	394	178.8
Crated	434	197.0

**For reference only*

	cu. ft.	cu. m.
Volume	35.4	1.01

Dimensions	in.	mm.
Width	18-1/2	467
Depth	30-1/4	769
Height	59-7/8	1521
Floor Clearance	7-3/4	191

**Mounted on standard casters*

Electrical	Maximum Fuse Size	Minimum Circuit Ampacity	Poles (P) Wires (W)
115/60/1 Air	40	28	2P 3W
115/60/1 Water	30	21	2P 3W
208-230/60/1 Air	15	12	2P 3W

This unit may be manufactured with other electrical characteristics and may have additional regulatory agency approvals. Consult the local Taylor distributor for other electrical characteristics and agency approvals based on specific electrical and country requirements.

(For exact electrical information, approval marks, and refrigeration, always refer to the data label of the unit.)

Continuing research results in steady improvements; therefore, these specifications are subject to change without notice.

Bidding Specs

Electrical: Volt _____ Hz _____ ph _____
 Neutral: Yes No **Cooling:** Air Water NA

Options: _____

All options may not be available in combination with others or with all electrical or cooling configurations. Please consult your local Taylor distributor.

Authorized Taylor Distributor

Specifications

Electrical

One dedicated electrical connection is required. See the electrical chart for the proper electrical requirements. Manufactured to be permanently connected. Consult your local Taylor distributor for cord and receptacle specifications as local codes allow.

Beater Motor

One, 1/4 hp.

Refrigeration System

One, 7,500 BTU/hr. R449A.
 (BTUs may vary depending on compressor used.)

Air-Cooled

Minimum 3" (76 mm) around all sides. Install the deflector provided to prevent recirculation of warm air. Minimum air clearances must be met to ensure adequate airflow for optimum performance.

Water-Cooled

Water inlet and drain connections underside of base 3/8" FPT.

Accessories

- Remote Auto Fill Systems
- Syrup Jars and Brackets



750 N. Blackhawk Blvd.
 Rockton, Illinois 61072
www.taylor-company.com