



Refrigerated Showcases

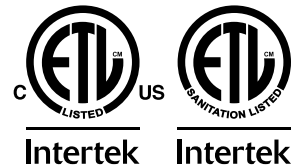
Models RE-CN-0050D-BK, 0050D-SS, 0071D-BK, 0071D-SS, 0084D-BK,
0084D-SS

Items 50104, 50105, 50106, 50107, 50108, 50109

Instruction Manual



Revised - 11/01/2024



Toll Free: 1-800-465-0234
Fax: 905-607-0234
Email: service@omcan.com
www.omcan.com



Table of Contents

Model RS-CN-0050D-BK / Model RS-CN-0050D-SS
Model RS-CN-0071D-BK / Model RS-CN-0071D-SS
Model RS-CN-0084D-BK / Model RS-CN-0084D-SS

Section	Page
Disclaimer -----	3
General Information -----	4 - 5
Safety and Warranty -----	5 - 7
Technical Specifications -----	8
Installation and Operation -----	9 - 10
Maintenance -----	10 - 11
Troubleshooting -----	12 - 13
Parts Breakdown -----	14 - 22
Electrical Schematics -----	23 - 25
Notes -----	26
Warranty Registration -----	27

OMCAN IS NOT RESPONSIBLE FOR ANY DAMAGES DUE TO WATER LEAKS. WARRANTY FOR WATER LEAKS IS VOID IF THE AMBIENT ROOM TEMPERATURE EXCEEDS 75°F AND 55% RELATIVE HUMIDITY, AND THE APPLIANCE DRAIN IS NOT CONNECTED DIRECTLY TO A FLOOR DRAIN.

OMCAN N'EST PAS RESPONSABLE DES DOMMAGES DUS AUX FUITES D'EAU. LA GARANTIE POUR LES FUITES D'EAU EST ANNULÉE SI LA TEMPÉRATURE AMBIANTE DE LA PIÈCE DÉPASSE 75°F ET 55% D'HUMIDITÉ RELATIVE, ET SI LE DRAIN DE L'APPAREIL N'EST PAS RACCORDÉ DIRECTEMENT À UN DRAIN DE PLANCHER.

OMCAN NO SE HACE RESPONSABLE DE LOS DAÑOS CAUSADOS POR FUGAS DE AGUA. LA GARANTÍA POR FUGAS DE AGUA QUEDA ANULADA SI LA TEMPERATURA AMBIENTE SUPERA LOS 75°F Y EL 55% DE HUMEDAD RELATIVA, Y EL DESAGÜE DEL APARATO NO ESTÁ CONECTADO DIRECTAMENTE A UN DESAGÜE DE PISO.

General Information

Omcan Manufacturing and Distributing Company Inc., Food Machinery of America, Inc. dba Omcan and Omcan Inc. are not responsible for any harm or injury caused due to any person's improper or negligent use of this equipment. The product shall only be operated by someone over the age of 18, of sound mind, and not under the influence of any drugs or alcohol, who has been trained in the correct operation of this machine, and is wearing authorized, proper safety clothing. Any modification to the machine voids any warranty, and may cause harm to individuals using the machine or in the vicinity of the machine while in operation.

CHECK PACKAGE UPON ARRIVAL

Upon receipt of an Omcan shipment please inspect for external damage. If no damage is evident on the external packaging, open carton to ensure all ordered items are within the box, and there is no concealed damage to the machine. If the package has suffered rough handling, bumps or damage (visible or concealed), please note it on the bill of lading before accepting the delivery and contact Omcan within 24 hours, so we may initiate a claim with the carrier. A detailed report on the extent of the damage caused to the machine must be filled out within three days, from the delivery date shown in the shipping documents. Omcan has no recourse for damaged products that were shipped collect or third party.

Before operating any equipment, always read and familiarize yourself with all operation and safety instructions.

Omcan would like to thank you for purchasing this machine. It's of the utmost importance to save these instructions for future reference. Also save the original box and packaging for shipping the equipment if servicing or returning of the machine is required.

Omcan Fabrication et distribution Compagnie Limité et Food Machinery d'Amérique, dba Omcan et Omcan Inc. ne sont pas responsables de tout dommage ou blessure causé du fait que toute personne ait utilisé cet équipement de façon irrégulière. Le produit ne doit être exploité que par quelqu'un de plus de 18 ans, sain d'esprit, et pas sous l'influence d'une drogue ou d'alcool, qui a été formé pour utiliser cette machine correctement, et est vêtu de vêtements de sécurité appropriés. Toute modification de la machine annule toute garantie, et peut causer un préjudice à des personnes utilisant la machine ou des personnes à proximité de la machine pendant son fonctionnement.

VÉRIFIEZ LE COLIS DÈS RÉCEPTION

Dès réception d'une expédition d'Omcan veuillez inspecter pour dommages externes. Si aucun dommage n'est visible sur l'emballage externe, ouvrez le carton afin de s'assurer que tous les éléments commandés sont dans la boîte, et il n'y a aucun dommage dissimulé à la machine. Si le colis n'a subi aucune mauvaises manipulations, de bosses ou de dommages (visible ou cachée), notez-le sur le bond de livraison avant d'accepter la livraison et contactez Omcan dans les 24 heures qui suivent, pour que nous puissions engager une réclamation auprès du transporteur. Un rapport détaillé sur l'étendue des dommages causés à la machine doit être rempli dans un délai de trois jours, à compter de la date de livraison indiquée dans les documents d'expédition. Omcan n'a aucun droit de recours pour les produits endommagés qui ont été expédiés ou cueillis par un tiers transporteur.

Avant d'utiliser n'importe quel équipement, toujours lire et vous familiariser avec toutes les opérations et les

General Information

consignes de sécurité.

Omcan voudrais vous remercier d'avoir choisi cette machine. Il est primordial de conserver ces instructions pour une référence ultérieure. Également conservez la boîte originale et l'emballage pour l'expédition de l'équipement si l'entretien ou le retour de la machine est nécessaire.

Omcan Empresa De Fabricacion Y Distribucion Inc. Y Maquinaria De Alimentos De America, Inc. dba Omcan y Omcan Inc. no son responsables de ningun daño o perjuicio causado por cualquier persona inadecuada o el uso descuidado de este equipo. El producto solo podra ser operado por una persona mayor de 18 años, en su sano juicio y no bajo alguna influencia de droga o alcohol, y que este ha sido entrenado en el correcto funcionamiento de esta máquina, y ésta usando ropa apropiada y autorizada. Cualquier modificación a la máquina anula la garantía y puede causar daños a las personas usando la máquina mientras esta en el funcionamiento.

REVISE EL PAQUETE A SU LLEGADA

Tras la recepcion de un envio Omcan favor inspeccionar daños externos. Si no hay daños evidentes en el empaque exterior, Habra el carton para asegurarse que todos los articulos solicitados estén dentro de la caja y no encuentre daños ocultos en la máquina. Si el paquete ha sufrido un manejo de poco cuidado, golpes o daños (visible o oculto) por favor anote en la factura antes de aceptar la entrega y contacte Omcan dentro de las 24 horas, de modo que podamos iniciar una reclamación con la compañía. Un informe detallado sobre los daños causados a la máquina debe ser llenado en el plazo de tres días, desde la fecha de entrega que se muestra en los documentos de envío. Omcan no tiene ningun recurso por productos dañados que se enviaron a recoger por terceros.

Antes de utilizar cualquier equipo, siempre lea y familiarizarse con todas las instrucciones de funcionamiento y seguridad.

Omcan le gustaría darle las gracias por la compra de esta máquina. Es de la mayor importancia para salvar estas instrucciones para futuras consultas. Además, guarda la caja original y el embalaje para el envío del equipo si servicio técnico o devolución de la máquina que se requiere.

Safety and Warranty

CAUTION FOR SAFETY

1. Leave enough space from the wall to the cabinet and the ceiling; do not be sealed completely in the back part of the cabinet. Prepare an air vent to the outside.
Caution: it needs more than 20 cm from the cabinet to wall.
2. Please move away all out-package for bottom heat radiation to avoid fire.
3. It's prohibited to store flammable and volatile chemical, or leading to exploding.
4. Individual single-phase socket must be used. It should be reliably connected to a grounding wire.

Safety and Warranty

Caution: do not connect grounding wire to a water or gas pipe.

5. Do not be hard collided or fiercely vibrated when in transportation; it is not larger than 45° for the inclination of the cabinet.
6. Please refer to the troubleshooting references when the unit is facing some problems. Do not attempt to solve the problem on your own, please refer to certified technician only.

DANGER: risk of fire or explosion. Flammable refrigerant used. Do not use mechanical devices to defrost refrigerator. Do not puncture refrigerant tubing.

DANGER: risk of fire or explosion. Flammable refrigerant used. To be repaired only by trained service personnel. Do not puncture refrigerant tubing.

CAUTION: risk of fire or explosion. Flammable refrigerant used. Consult repair manual/owner's guide before attempting to service this product. All safety precautions must be followed.

CAUTION: risk of fire or explosion. Dispose of properly in accordance with federal or local regulations. Flammable refrigerant used.

CAUTION: risk of fire or explosion due to puncture of refrigerant tubing; follow handling instructions carefully. Flammable refrigerant used.

CAUTION: keep clear of obstruction all ventilation openings in the appliance enclosure or in the structure.

CAUTION: servicing shall be done by factory authorized service personnel, so as to minimize the risk of possible ignition due to incorrect parts or improper service.

Notice: use this equipment for its intended purpose as described in this user manual.

Before you start to install your unit, carefully inspect it for freight damage. If damage is discovered, immediately file a claim with the delivery freight carrier.

SAFETY INFORMATION

When using electrical appliances basic safety precautions should be followed:

- This cooler must be properly installed and located in accordance with the installation service representative.
- Do not allow children to climb, stand or hang on the shelves in the cooler. They could damage the unit and seriously injure themselves.
- Do not store or use gasoline or other flammable vapors and liquids in the vicinity of this or any other appliance.
- Unplug the unit from the electrical outlet before cleaning or making repairs.
- Do not touch the cold surfaces in the refrigerator compartment when hands are damp or wet. Skin may stick to these extremely cold surfaces.

Safety and Warranty

NOTE: it is strongly recommended that any servicing be performed by an authorized instructions before it is used.

When the refrigerator is installed or used, all the packaging (including cardboard and plastic wrap) should be removed.

- Keep the refrigerator stable to avoid vibration and noise.
- The refrigerator should be installed in a place with good ventilation and a space of at least 4" should be allowed between the surrounding walls and the cabinet wall for air circulation.
- Unit should be placed far from any heating source to avoid decrease of refrigeration efficiency.
- Install the refrigerator in a dry place to prevent rust from forming on the compartment body, which may affect the electrical insulation.

RESIDENTIAL USERS: vendor assumes no liability for parts or labor coverage for component failure or other damages resulting from installation in non-commercial or residential applications. The right is reserved to deny shipment for residential usage; if this occurs, you will be notified as soon as possible.

1 YEAR PARTS AND LABOUR WARRANTY

Within the warranty period, contact Omcan Inc. at 1-800-465-0234 to schedule an Omcan authorized service technician to repair the equipment locally.

Unauthorized maintenance will void the warranty. Warranty covers electrical and part failures, not improper use.

Please see <https://omcan.com/disclaimer> for complete info.

WARNING:

The packaging components are classified as normal solid urban waste and can therefore be disposed of without difficulty.

In any case, for suitable recycling, we suggest disposing of the products separately (differentiated waste) according to the current norms.

DO NOT DISCARD ANY PACKAGING MATERIALS IN THE ENVIRONMENT!

Technical Specifications

BLACK UNITS

Model	RS-CN-0050D-BK	RS-CN-0071D-BK	RS-CN-0084D-BK
Item Number	50104	50106	50108
Capacity	583 L / 20.58 cu.ft.	851 L / 30.05 cu.ft.	1017 L / 35.91 cu.ft.
Input Power	518 W	816 W	1100 W
Defrost Power	320 W	460 W	540 W
Foam Agent	Cyclopentane		
Current	4.4A	7.3A	10.2A
Max Ambient Temp Rating	24°C / 75°F		
Refrigerant	R290		
Electrical	110-120V / 60Hz / 1		
Net Dimensions (DWH)	50" x 35.5" x 56.9" 1270 x 902 x 1446mm	71.1" x 35.5" x 56.9" 1805 x 902 x 1446mm	84.1" x 35.5" x 56.9" 2135 x 902 x 1446mm
Net Weight	308.6 lbs. / 140 kgs.	418.9 lbs. / 190 kgs.	485 lbs. / 220 kgs.

STAINLESS STEEL UNITS

Model	RS-CN-0050D-SS	RS-CN-0071D-SS	RS-CN-0084D-SS
Item Number	50105	50107	50109
Capacity	583 L / 20.58 cu.ft.	851 L / 30.05 cu.ft.	1017 L / 35.91 cu.ft.
Input Power	518 W	816 W	1100 W
Defrost Power	320 W	460 W	540 W
Foam Agent	Cyclopentane		
Current	4.4A	7.3A	10.2A
Max Ambient Temp Rating	24°C / 75°F		
Refrigerant	R290		
Electrical	110-120V / 60Hz / 1		
Net Dimensions (DWH)	50" x 35.5" x 56.9" 1270 x 902 x 1446mm	71.1" x 35.5" x 56.9" 1805 x 902 x 1446mm	84.1" x 35.5" x 56.9" 2135 x 902 x 1446mm
Net Weight	308.6 lbs. / 140 kgs.	418.9 lbs. / 190 kgs.	485 lbs. / 220 kgs.



Installation and Operation

To ensure that your unit works properly from the first day, it must be installed properly. We highly recommend a trained refrigeration mechanic and electrician install your equipment.

- Remove the outer packaging, inspect for concealed damage. Immediately file a claim with the freight carrier if there is damage.
- Remove the wood frame and pallet.
- Place the refrigerator on a flat surface and remove to the final location. Be sure there is adequate ventilation in your room. Under extreme heat conditions, (100°F+, 38°C+), you may want to install an exhaust fan.

ELECTRICAL

Do not under any circumstances cut or remove the grounding prong from the power cord. For safety this appliance must be properly grounded at all times.

- The power cord of this cooler is equipped with a grounding plug which mates with a standard grounding wall outlet to minimize the possibility of electric shock hazard.
- If the outlet is a standard 2-prong outlet, it must be replaced with the properly grounded wall outlet. **NEVER USE AN ADAPTER PLUG!**
- Have the wall outlet and circuit checked by a qualified electrician to make sure the outlet is properly grounded. Check the incoming voltage with a voltmeter.
- **DO NOT USE EXTENSION CORDS.** The use of extension cords to connect the cooler will void warranty. The unit must be close enough to the electrical supply so that extension cords are never used.
- The cooler should always be plugged into its own dedicated circuit with a voltage rating that matches the rating plate. This provides the best performance and also prevents overloading wiring circuits which could become a fire hazard from overheated wires.
- Never unplug your cooler by pulling on the power cord. Always grip the plug firmly and pull straight out from the outlet.
- Repair or replace immediately all power cords that have become frayed or otherwise damaged. Do not use a power cord that has cracks or abrasion damage along its length or at either of its ends.
- When removing the cooler away from the wall be careful not to run over or damage the power cord.

NOTE: wiring diagram can be referenced by removing the front louvered grill, and looking on the inside cabinet wall.

Plug in the cooler and the compressor is ready to operate.

- Excessive tampering with the control could lead to service difficulties. Should it ever become necessary to replace the temperature control it should be ordered from your dealer or recommended service agent.

LIGHT SWITCH LOCATION

The light switch is located at the left side of rear grille.

NOTE: if the unit is disconnected or shut off, wait five (5) minutes before re-starting unit.

Installation and Operation

RECOMMENDATION

Before loading product the unit should be run for 2 to 3 hours. This allows confirmation that the electrical wiring and installation are correct and no shipping damage has occurred.

Maintenance

Condensers accumulate dirt and dust and require cleaning every 30 days. Dirty condensers result in compressor failure, product loss, and lost sales - which are not covered by warranty.

Air is pulled through the condenser continuously along with dust, lint, grease, etc. If you keep the condenser clean you will minimize your service expense and lower your electrical costs. The condenser requires scheduled cleaning every days or as needed. A dirty condenser can result in non-warranted part and compressor failures and product loss.

Proper cleaning involves removing debris from the condenser by using a soft brush or vacuuming the condenser with a shop vacuum or using CO₂, nitrogen or pressurized air.

If you cannot remove the debris adequately please call your refrigeration service company.

CLEANING THE CONDENSER COIL

REQUIRED TOOLS

- Phillips screwdriver.
- Stiff bristle brush.
- Adjustable wrench.

WHEN USING ELECTRICAL APPLIANCES BASIC SAFETY PRECAUTIONS SHOULD BE FOLLOWED

- Disconnect power to unit.
- Take off front grill assembly by removing all screws.
- Remove bolts anchoring compressor assembly to frame rails and carefully slide out - tube connections are flexible.
- Clean off accumulated dirt from condensing coil with the stiff bristle brush.
- Lift cardboard cover above fan at plastic plugs and carefully clean condenser coil and fan blades.
- After brushing condenser coil, vacuum dirt from coil and interior floor.
- Replace cardboard cover, carefully slide compressor assembly back into position and replace bolts.
- Reinstall front grille assembly onto unit with appropriate fasteners and clips. Tighten all screws.
- Connect unit to power and check to see if condenser is running.

STAINLESS STEEL CARE AND CLEANING

RECOMMENDED CLEANERS FOR STAINLESS STEEL

- Soap, ammonia and detergent medallion applied with a soft cloth or sponge for routine cleaning.
- Arcal 20, Loc-O-Nu Eco shine provide a barrier film for fingerprints and smears.
- Cameo, Talc, Zud First Impression is for stubborn stains and discoloration. Rub in direction of polish lines.
- Easy-off and De-Grease It oven aid are excellent for removals on all finishes for grease-fatty acids, blood and burnt-on foods.
- Any good commercial detergent can be applied with a sponge or soft cloth to remove grease and oil.
- Benefit, Super Sheen, Sheila Shine are good for restoration/passivation.

CAUTION: do not use any steel wool, abrasive or chlorine based products to clean stainless steel surfaces.

STAINLESS STEEL ENEMIES

There are three basic items that can break down stainless steel's passivity layer and allow corrosion to occur.

1. Scratches from wire brushes, metal scrapers and steel pads are just a few examples of items that can be abrasive to stainless steel's surface.
2. Deposits left on stainless steel can leave spots. Hard water can leave spots. Hard water that is heated can leave deposits if left to sit for too long. These deposits can cause the passive layer to break down and rust stainless steel. All deposits left from food prep or service should be removed as quickly as possible.
3. Chlorides are present in table salt, food and water. Household and industrial cleaners are the worst type of chlorides to use.

8 STEPS THAT CAN HELP PREVENT RUST ON STAINLESS STEEL

1. Use the correct cleaning tools. Use non-abrasive tools when cleaning your stainless steel products. The stainless steel's passive layer will not be harmed by soft cloths and plastic scouring pads.
2. Clean along the polish lines. Polish lines or grain are visible on some stainless steel. Always scrub parallel to visible lines. Use a plastic scouring pad or soft cloth when grain is not visible.
3. Use alkaline, alkaline chlorinated or non-chloride containing cleaners. While many traditional cleaners are loaded with chlorides, the industry is providing an ever increasing choice of non-chloride cleaners. If unsure of chloride content contact the cleaner supplier. If present cleaner contains chlorides, ask for an alternative. Avoid cleaners containing quaternary salts as they can attack stainless steel causing pitting and rusting.
4. Water treatment. To reduce deposits, use soft water whenever possible. Installation of certain filters can be an advantage. Contact a treatment specialist about proper water treatment.
5. Maintain cleanliness of food equipment. Use cleaners at recommended strength (alkaline, alkaline chlorinated or non-chloride). Avoid buildup of hard stains by cleaning frequently.
6. When using chlorinated cleaners you must rinse and wipe dry immediately. It is better to wipe standing cleaning agents and water as soon as possible. All stainless steel equipment to air dry. Oxygen helps maintain the passivity film on stainless steel.
7. Hydrochloric acid (muriatic acid) should never be used on stainless steel.
8. Regularly restore/passivate stainless steel.

Troubleshooting

Before requesting any service on your unit, please check the following points. Please note that this guide serves only as a reference for solutions to common problems.

SYMPTOM	POSSIBLE CAUSE	CORRECTIVE ACTION
Compressor not running.	Fuse blown or circuit breaker tripped.	Replace fuse or reset circuit breaker.
	Power cord unplugged.	Plug in power cord.
	Thermostat set too high.	Set thermostat to lower temperature.
	Cabinet in defrost cycle.	Wait for defrost cycle to finish.
Condensing unit runs for long periods of time.	Excessive amount of warm product placed in cabinet.	Allow adequate time for product to cool down.
	Prolonged door opening or door ajar.	Ensure doors are closed when not in use. Avoid opening doors for long periods of time.
	Door gasket(s) not sealing properly.	Ensure gaskets are snapped in completely.
		Remove gasket and wash with soap and water. Check condition of gasket and replace if necessary.
	Dirty condenser coil.	Clean the condenser coil.
	Evaporator coil iced over.	Unplug unit and allow coil to defrost. Make sure thermostat is not set too cold. Ensure that door gasket(s) are sealing properly.

Troubleshooting

Cabinet temperature is too warm.	Thermostat set too warm.	Set thermostat to lower temperature.
	Blocking air flow.	Re-arrange product to allow for proper air flow. Make sure there is at least four inches of clearance from evaporator.
	Excessive amount of warm product placed in cabinet.	Allow adequate time for product to cool down.
	Fuse blown or circuit breaker tripped.	Replace fuse or reset circuit breaker.
	Dirty condenser coil.	Clean the condenser coil.
	Prolonged door opening or door ajar.	Ensure doors are closed when not in use. Avoid opening doors for long periods of time.
	Evaporator coil iced over.	Unplug unit and allow coil to defrost. Make sure thermostat is not set too cold. Ensure that door gasket(s) are sealing properly.
Cabinet is noisy.	Loose part(s).	Locate and tighten loose part(s).
	Tubing vibration.	Ensure tubing is free from contact with other tubing or components.

Parts Breakdown

Model RS-CN-0050D-BK 50104

Item No.	Description	Position	Item No.	Description	Position	Item No.	Description	Position
AS656	Front Grill - Black for 50104	2	AL996	Condenser Fan Cover for 50104	21	AS680	Hanging Sheet for Evaporator Baffle for 50104	40
AS657	Transformer for 50104	3	AA764	Condenser/Evaporator Fan Motor Blade for 50104	22	AS681	Baffle for Evaporator for 50104	41
AS658	Limited Block of Installation Board for 50104	4	AS665	Condenser for 50104	23	AG541	Evaporator for 50104	42
AG573	Compressor for 50104	5	26247	Castor without Brake for 50104	24	AS682	Evaporator Fixed Plate for 50104	43
AI385	Waterproof Cover of Thermostat for 50104	6	26246	Castor with Brake for 50104	25	AG538	LED Light and Socket for 50104	44
AM940	Carel Temperature Controller PYGZAZ0584 for 50104	7	AS666	Door for 50104	26	AS683	Defrost Heater for 50104	45
AS659	Back Grill - Black for 50104	8	AS667	Sliding Glass Door for 50104	27	AS684	Evaporator Temperature Sensor for 50104	46
AA362	LED Light Switch for 50104	9	AS668	Extension Spring for Sliding Door for 50104	28	AG542	Inner Drain Pipe for 50104	47
AA124	Power Switch for 50104	10	AS669	Bottom Shelf for 50104	29	AS685	Temperature Sensor of Cabinet Inside for 50104	48
AS660	Left Track for Assembling Panel for 50104	11	AS670	Back Shelf Support Board for 50104	30	AS686	Cover Board for Temp Sensor for 50104	49
AA874	Outer Drain Pan for 50104	12	AS671	Bracket for 50104	31	AS687	Front Glass for 50104	50
AA805	Power Cord for 50104	13	AS672	Middle Shelf for 50104	32	AS688	Left Supporting Plate for Front Glass for 50104	51
AS661	Support Board of Feet for 50104	14	AS673	Front Shelf Support Board for 50104	33	AS689	Bottom Supporting Plate for Front Glass for 50104	52
AI968	Filter for 50104	15	AS674	Bottom Left Shelf Support Board for 50104	34	AS690	Baffle for Front Glass for 50104	53
AI969	Filter Fixer for 50104	16	AS675	Upper Left Shelf Support Board for 50104	35	AS691	Air Pipe Protection Board for 50104	54
AS662	Compressor Unit Installation Board for 50104	17	AS676	Upper Interior Floor for 50104	36	AA528	Inner Drain Pipe for 50104	55
AS663	Handle of Compressor Installation Board for 50104	18	AS677	Bottom Interior Floor for 50104	37	AS692	Defrost Heater Fuse for 50104	56
AS664	Right Track for Assembling Panel for 50104	19	AS678	Top Board Connector for 50104	38	AS693	Protect Board of Machine Room for 50104	57
AG448	Evaporator Fan Motor for 50104	20	AS679	Grill for Evaporator for 50104	39			

Parts Breakdown

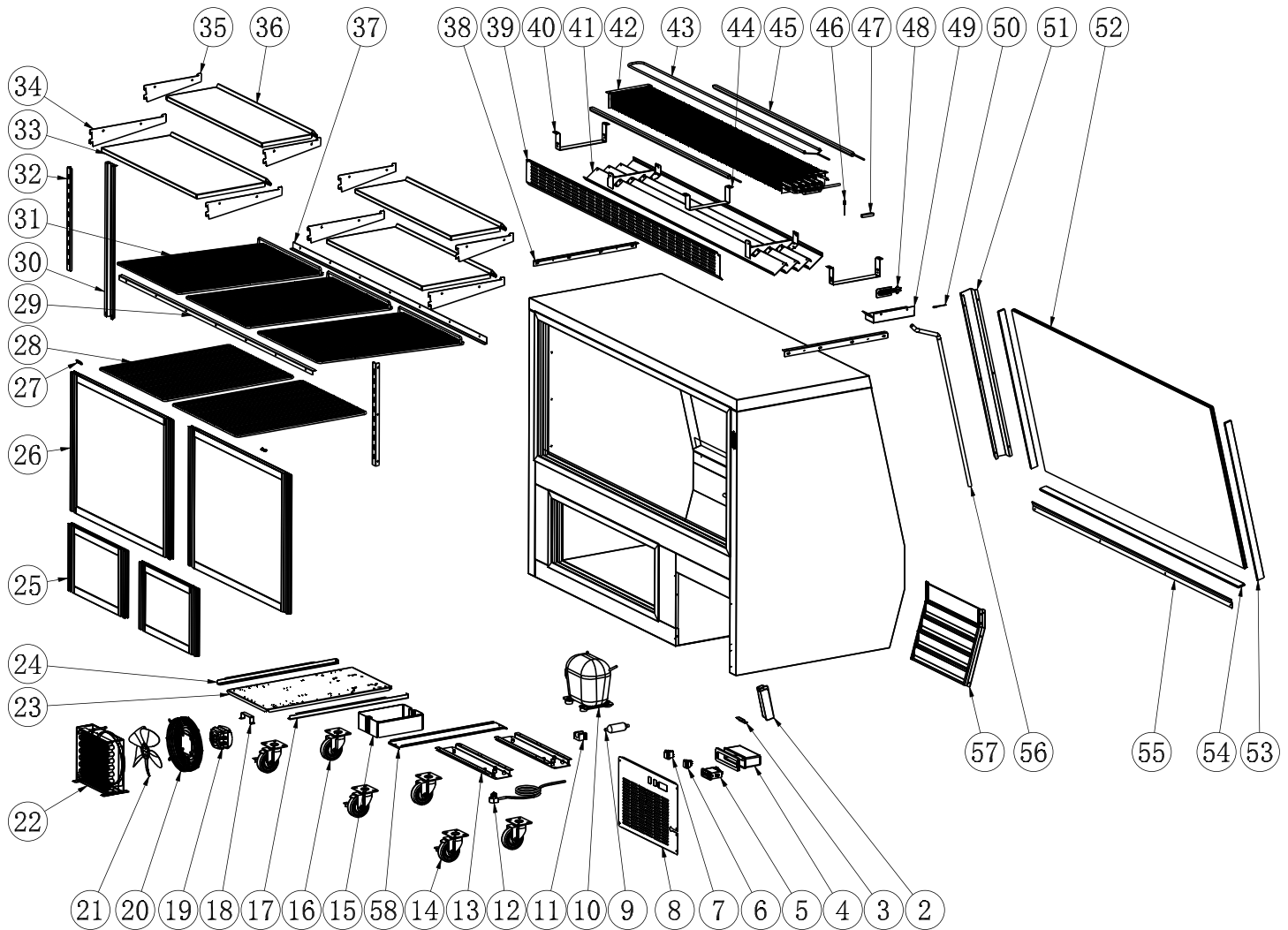
Model RS-CN-0050D-SS 50105

Item No.	Description	Position	Item No.	Description	Position	Item No.	Description	Position
AS694	Front Grill - Stainless Steel for 50105	2	AL996	Condenser Fan Cover for 50105	21	AS680	Hanging Sheet for Evaporator Baffle for 50105	40
AS657	Transformer for 50105	3	AA764	Condenser/Evaporator Fan Motor Blade for 50105	22	AS681	Baffle for Evaporator for 50105	41
AS658	Limited Block of Installation Board for 50105	4	AS665	Condenser for 50105	23	AG541	Evaporator for 50105	42
AG573	Compressor for 50105	5	26247	Castor without Brake for 50105	24	AS682	Evaporator Fixed Plate for 50105	43
AI385	Waterproof Cover of Thermostat for 50105	6	26246	Castor with Brake for 50105	25	AG538	LED Light and Socket for 50105	44
AM940	Carel Temperature Controller PYGZAZ0584 for 50105	7	AS666	Door for 50105	26	AS683	Defrost Heater for 50105	45
AS695	Back Grill - Stainless Steel for 50105	8	AS667	Sliding Glass Door for 50105	27	AS684	Evaporator Temperature Sensor for 50105	46
AA362	LED Light Switch for 50105	9	AS668	Extension Spring for Sliding Door for 50105	28	AG542	Inner Drain Pipe for 50105	47
AA124	Power Switch for 50105	10	AS669	Bottom Shelf for 50105	29	AS685	Temperature Sensor of Cabinet Inside for 50105	48
AS660	Left Track for Assembling Panel for 50105	11	AS670	Back Shelf Support Board for 50105	30	AS686	Cover Board for Temp Sensor for 50105	49
AA874	Outer Drain Pan for 50105	12	AS671	Bracket for 50105	31	AS687	Front Glass for 50105	50
AA805	Power Cord for 50105	13	AS672	Middle Shelf for 50105	32	AS688	Left Supporting Plate for Front Glass for 50105	51
AS661	Support Board of Feet for 50105	14	AS673	Front Shelf Support Board for 50105	33	AS689	Bottom Supporting Plate for Front Glass for 50105	52
AI968	Filter for 50105	15	AS674	Bottom Left Shelf Support Board for 50105	34	AS690	Baffle for Front Glass for 50105	53
AI969	Filter Fixer for 50105	16	AS675	Upper Left Shelf Support Board for 50105	35	AS691	Air Pipe Protection Board for 50105	54
AS662	Compressor Unit Installation Board for 50105	17	AS676	Upper Interior Floor for 50105	36	AA528	Inner Drain Pipe for 50105	55
AS663	Handle of Compressor Installation Board for 50105	18	AS677	Bottom Interior Floor for 50105	37	AS692	Defrost Heater Fuse for 50105	56
AS664	Right Track for Assembling Panel for 50105	19	AS678	Top Board Connector for 50105	38	AS693	Protect Board of Machine Room for 50105	57
AG448	Evaporator Fan Motor for 50105	20	AS679	Grill for Evaporator for 50105	39			

Parts Breakdown

Model RS-CN-0071D-BK 50106

Model RS-CN-0071D-SS 50107



Parts Breakdown

Model RS-CN-0071D-BK 50106

Item No.	Description	Position	Item No.	Description	Position	Item No.	Description	Position
AS696	Transformer for 50106	2	AA764	Condenser/Evaporator Fan Motor Blade for 50106	21	AS680	Hanging Sheet for Evaporator Baffle for 50106	40
AS658	Limited Block of Installation Board for 50106	3	AS665	Condenser for 50106	22	AS709	Baffle for Evaporator for 50106	41
AI385	Waterproof Cover of Thermostat for 50106	4	AS662	Compressor Unit Installation Board for 50106	23	AS710	Evaporator for 50106	42
AM940	Carel Temperature Controller PYGZAZ0584 for 50106	5	AS660	Left Track for Assembling Panel for 50106	24	AS711	Defrost Heater for 50106	43
AA362	LED Light Switch for 50106	6	AS698	Door for 50106	25	AS682	Evaporator Fixed Plate for 50106	44
AA124	Power Switch for 50106	7	AS699	Sliding Glass Door for 50106	26	AS712	LED Light for 50106	45
AS659	Back Grill - Black for 50106	8	AS700	Extension Spring for Sliding Door for 50106	27	AS684	Evaporator Temperature Sensor for 50106	46
AI968	Filter for 50106	9	AS701	Bottom Shelf for 50106	28	AS692	Defrost Heater Fuse for 50106	47
AS697	Compressor for 50106	10	AS702	Back Shelf Support Board for 50106	29	AS686	Cover Board for Temp Sensor for 50106	48
AI969	Filter Fixer for 50106	11	AS703	Middle Bracket for 50106	30	AG542	Inner Drain Pipe for 50106	49
AA805	Power Cord for 50106	12	AS704	Middle Shelf for 50106	31	AS685	Temperature Sensor of Cabinet Inside for 50106	50
AS661	Support Board of Feet for 50106	13	AS671	Bracket for 50106	32	AS691	Air Pipe Protection Board for 50106	51
26246	Castor with Brake for 50106	14	AS705	Bottom Interior Floor for 50106	33	AS713	Front Glass for 50106	52
AA874	Outer Drain Pan for 50106	15	AS674	Bottom Left Shelf Support Board for 50106	34	AS688	Left Supporting Plate for Front Glass for 50106	53
26247	Castor without Brake for 50106	16	AS675	Upper Left Shelf Support Board for 50106	35	AS714	Bottom Supporting Plate for Front Glass for 50106	54
AS664	Right Track for Assembling Panel for 50106	17	AS706	Upper Interior Floor for 50106	36	AS715	Baffle for Front Glass for 50106	55
AS663	Handle of Compressor Installation Board for 50106	18	AS707	Front Shelf Support Board for 50106	37	AA528	Inner Drain Pipe for 50106	56
AG448	Evaporator Fan Motor for 50106	19	AS678	Top Board Connector for 50106	38	AS656	Front Grill - Black for 50106	57
AL996	Condenser Fan Cover for 50106	20	AS708	Grill for Evaporator for 50106	39	AS693	Protect Board of Machine Room for 50106	58

Parts Breakdown

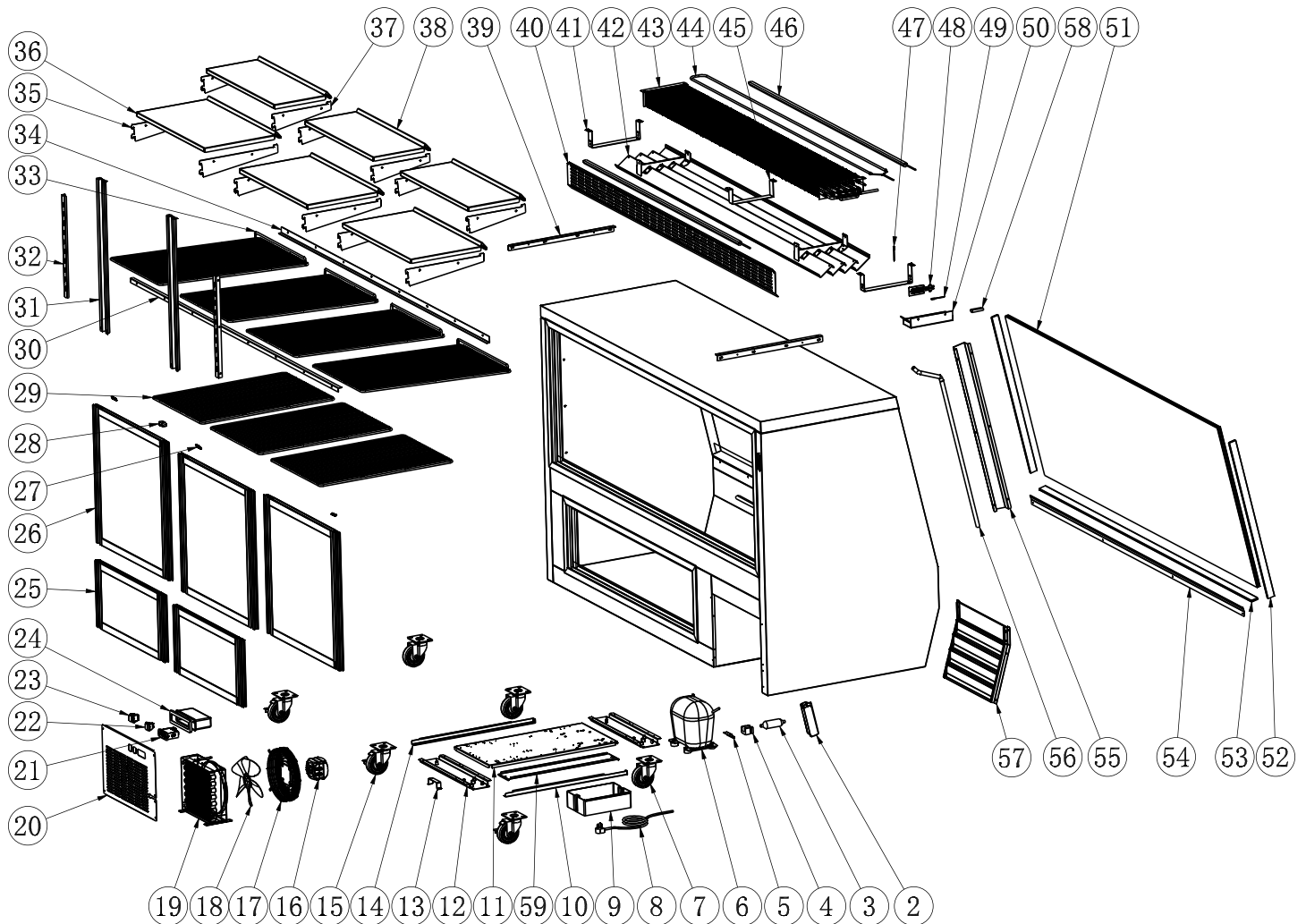
Model RS-CN-0071D-SS 50107

Item No.	Description	Position	Item No.	Description	Position	Item No.	Description	Position
AS696	Transformer for 50107	2	AA764	Condenser/Evaporator Fan Motor Blade for 50107	21	AS680	Hanging Sheet for Evaporator Baffle for 50107	40
AS658	Limited Block of Installation Board for 50107	3	AS665	Condenser for 50107	22	AS709	Baffle for Evaporator for 50107	41
AI385	Waterproof Cover of Thermostat for 50107	4	AS662	Compressor Unit Installation Board for 50107	23	AS710	Evaporator for 50107	42
AM940	Carel Temperature Controller PYGZAZ0584 for 50107	5	AS660	Left Track for Assembling Panel for 50107	24	AS711	Defrost Heater for 50107	43
AA362	LED Light Switch for 50107	6	AS698	Door for 50107	25	AS682	Evaporator Fixed Plate for 50107	44
AA124	Power Switch for 50107	7	AS699	Sliding Glass Door for 50107	26	AS712	LED Light for 50107	45
AS695	Back Grill - Stainless Steel for 50107	8	AS700	Extension Spring for Sliding Door for 50107	27	AS684	Evaporator Temperature Sensor for 50107	46
AI968	Filter for 50107	9	AS701	Bottom Shelf for 50107	28	AS692	Defrost Heater Fuse for 50107	47
AS697	Compressor for 50107	10	AS702	Back Shelf Support Board for 50107	29	AS686	Cover Board for Temp Sensor for 50107	48
AI969	Filter Fixer for 50107	11	AS703	Middle Bracket for 50107	30	AG542	Inner Drain Pipe for 50107	49
AA805	Power Cord for 50107	12	AS704	Middle Shelf for 50107	31	AS685	Temperature Sensor of Cabinet Inside for 50107	50
AS661	Support Board of Feet for 50107	13	AS671	Bracket for 50107	32	AS691	Air Pipe Protection Board for 50107	51
26246	Castor with Brake for 50107	14	AS705	Bottom Interior Floor for 50107	33	AS713	Front Glass for 50107	52
AA874	Outer Drain Pan for 50107	15	AS674	Bottom Left Shelf Support Board for 50107	34	AS688	Left Supporting Plate for Front Glass for 50107	53
26247	Castor without Brake for 50107	16	AS675	Upper Left Shelf Support Board for 50107	35	AS714	Bottom Supporting Plate for Front Glass for 50107	54
AS664	Right Track for Assembling Panel for 50107	17	AS706	Upper Interior Floor for 50107	36	AS715	Baffle for Front Glass for 50107	55
AS663	Handle of Compressor Installation Board for 50107	18	AS707	Front Shelf Support Board for 50107	37	AA528	Inner Drain Pipe for 50107	56
AG448	Evaporator Fan Motor for 50107	19	AS678	Top Board Connector for 50107	38	AS694	Front Grill - Stainless Steel for 50107	57
AL996	Condenser Fan Cover for 50107	20	AS708	Grill for Evaporator for 50107	39	AS693	Protect Board of Machine Room for 50107	58

Parts Breakdown

Model RS-CN-0084D-BK 50108

Model RS-CN-0084D-SS 50109



Parts Breakdown

Model RS-CN-0084D-BK 50108

Item No.	Description	Position	Item No.	Description	Position	Item No.	Description	Position
AS696	Transformer for 50108	2	AA362	LED Light Switch for 50108	22	AS729	Baffle for Evaporator for 50108	42
AI968	Filter for 50108	3	AA124	Power Switch for 50108	23	AG546	Evaporator for 50108	43
AI969	Filter Fixer for 50108	4	AI385	Waterproof Cover of Thermostat for 50108	24	AS730	Defrost Heater for 50108	44
AS658	Limited Block of Installation Board for 50108	5	AS718	Door for 50108	25	AS682	Evaporator Fixed Plate for 50108	45
AS716	Compressor for 50108	6	AS719	Sliding Glass Door for 50108	26	AS712	LED Light for 50108	46
26247	Castor without Brake for 50108	7	AS720	Extension Spring for Sliding Door for 50108	27	AS684	Evaporator Temperature Sensor for 50108	47
AA805	Power Cord for 50108	8	AS721	Door Limit Block for 50108	28	AS686	Cover Board for Temp Sensor for 50108	48
AA874	Outer Drain Pan for 50108	9	AS722	Bottom Shelf for 50108	29	AS685	Temperature Sensor of Cabinet Inside for 50108	49
AS660	Left Track for Assembling Panel for 50108	10	AS723	Back Shelf Support Board for 50108	30	AG542	Inner Drain Pipe for 50108	50
AS717	Compressor Unit Installation Board for 50108	11	AS703	Middle Bracket for 50108	31	AS731	Front Glass for 50108	51
AS661	Support Board of Feet for 50108	12	AS671	Bracket for 50108	32	AS688	Left Supporting Plate for Front Glass for 50108	52
AS663	Handle of Compressor Installation Board for 50108	13	AS724	Middle Shelf for 50108	33	AS732	Bottom Supporting Plate for Front Glass for 50108	53
AS664	Right Track for Assembling Panel for 50108	14	AS725	Front Shelf Support Board for 50108	34	AS733	Baffle for Front Glass for 50108	54
26246	Castor with Brake for 50108	15	AS674	Bottom Left Shelf Support Board for 50108	35	AS691	Air Pipe Protection Board for 50108	55
AG448	Evaporator Fan Motor for 50108	16	AS726	Bottom Interior Floor for 50108	36	AA528	Inner Drain Pipe for 50108	56
AL996	Condenser Fan Cover for 50108	17	AS675	Upper Left Shelf Support Board for 50108	37	AS656	Front Grill - Black for 50108	57
AA764	Condenser/Evaporator Fan Motor Blade for 50108	18	AS727	Upper Interior Floor for 50108	38	AS692	Defrost Heater Fuse for 50108	58
AS665	Condenser for 50108	19	AS678	Top Board Connector for 50108	39	AS693	Protect Board of Machine Room for 50108	59
AS659	Back Grill - Black for 50108	20	AS728	Grill for Evaporator for 50108	40			
AM940	Carel Temperature Controller PYGZAZ0584 for 50108	21	AS680	Hanging Sheet for Evaporator Baffle for 50108	41			

Parts Breakdown

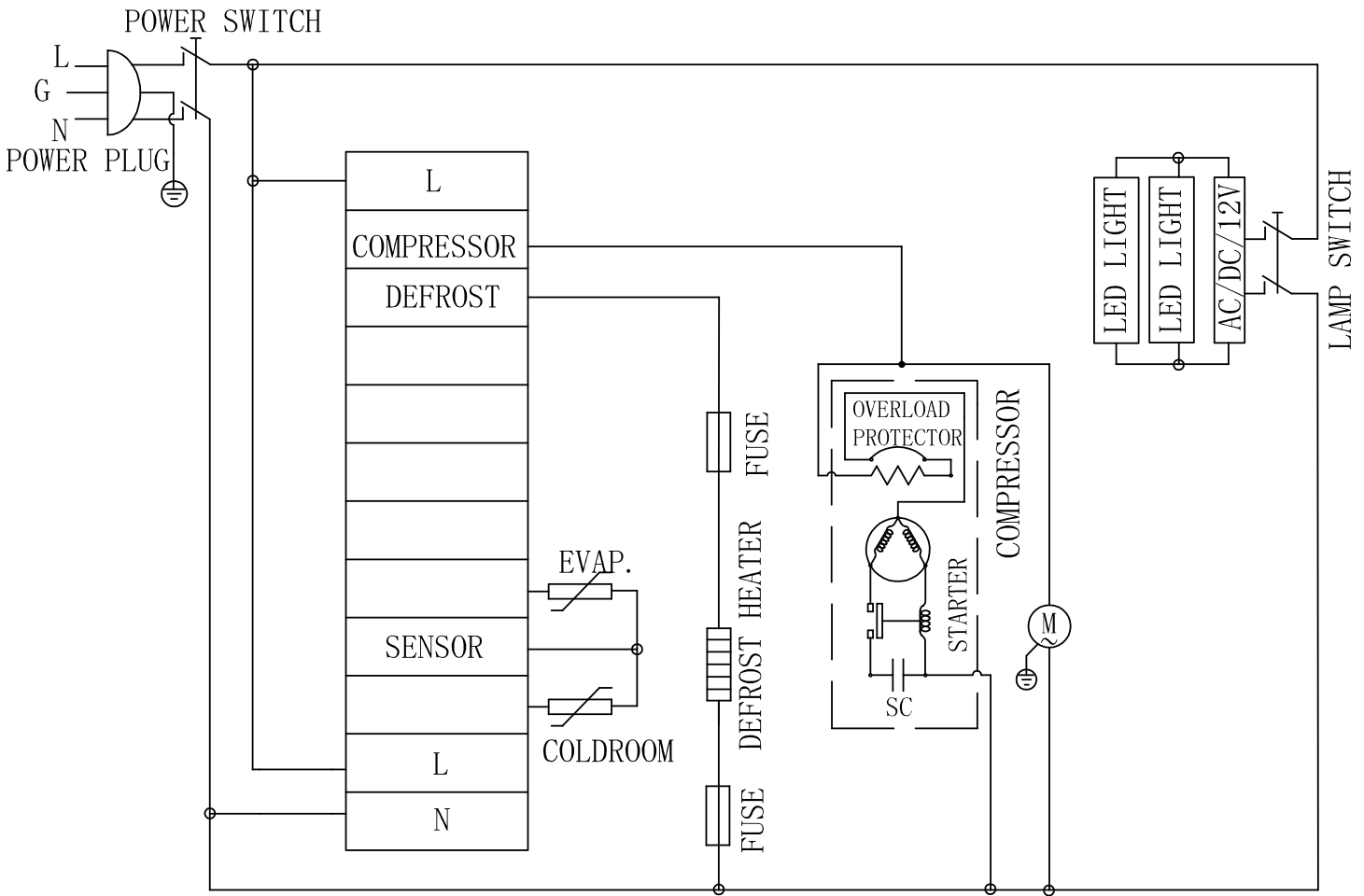
Model RS-CN-0084D-SS 50109

Item No.	Description	Position	Item No.	Description	Position	Item No.	Description	Position
AS696	Transformer for 50109	2	AA362	LED Light Switch for 50109	22	AS729	Baffle for Evaporator for 50109	42
AI968	Filter for 50109	3	AA124	Power Switch for 50109	23	AG546	Evaporator for 50109	43
AI969	Filter Fixer for 50109	4	AI385	Waterproof Cover of Thermostat for 50109	24	AS730	Defrost Heater for 50109	44
AS658	Limited Block of Installation Board for 50109	5	AS718	Door for 50109	25	AS682	Evaporator Fixed Plate for 50109	45
AS716	Compressor for 50109	6	AS719	Sliding Glass Door for 50109	26	AS712	LED Light for 50109	46
26247	Castor without Brake for 50109	7	AS720	Extension Spring for Sliding Door for 50109	27	AS684	Evaporator Temperature Sensor for 50109	47
AA805	Power Cord for 50109	8	AS721	Door Limit Block for 50109	28	AS686	Cover Board for Temp Sensor for 50109	48
AA874	Outer Drain Pan for 50109	9	AS722	Bottom Shelf for 50109	29	AS685	Temperature Sensor of Cabinet Inside for 50109	49
AS660	Left Track for Assembling Panel for 50109	10	AS723	Back Shelf Support Board for 50109	30	AG542	Inner Drain Pipe for 50109	50
AS717	Compressor Unit Installation Board for 50109	11	AS703	Middle Bracket for 50109	31	AS731	Front Glass for 50109	51
AS661	Support Board of Feet for 50109	12	AS671	Bracket for 50109	32	AS688	Left Supporting Plate for Front Glass for 50109	52
AS663	Handle of Compressor Installation Board for 50109	13	AS724	Middle Shelf for 50109	33	AS732	Bottom Supporting Plate for Front Glass for 50109	53
AS664	Right Track for Assembling Panel for 50109	14	AS725	Front Shelf Support Board for 50109	34	AS733	Baffle for Front Glass for 50109	54
26246	Castor with Brake for 50109	15	AS674	Bottom Left Shelf Support Board for 50109	35	AS691	Air Pipe Protection Board for 50109	55
AG448	Evaporator Fan Motor for 50109	16	AS726	Bottom Interior Floor for 50109	36	AA528	Inner Drain Pipe for 50109	56
AL996	Condenser Fan Cover for 50109	17	AS675	Upper Left Shelf Support Board for 50109	37	AS694	Front Grill - Stainless Steel for 50109	57
AA764	Condenser/Evaporator Fan Motor Blade for 50109	18	AS727	Upper Interior Floor for 50109	38	AS692	Defrost Heater Fuse for 50109	58
AS665	Condenser for 50109	19	AS678	Top Board Connector for 50109	39	AS693	Protect Board of Machine Room for 50109	59
AS695	Back Grill - Stainless Steel for 50109	20	AS728	Grill for Evaporator for 50109	40			
AM940	Carel Temperature Controller PYGZAZ0584 for 50109	21	AS680	Hanging Sheet for Evaporator Baffle for 50109	41			

Electrical Schematics

Model RS-CN-0050D-BK 50104

Model RS-CN-0050D-SS 50105

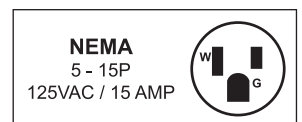
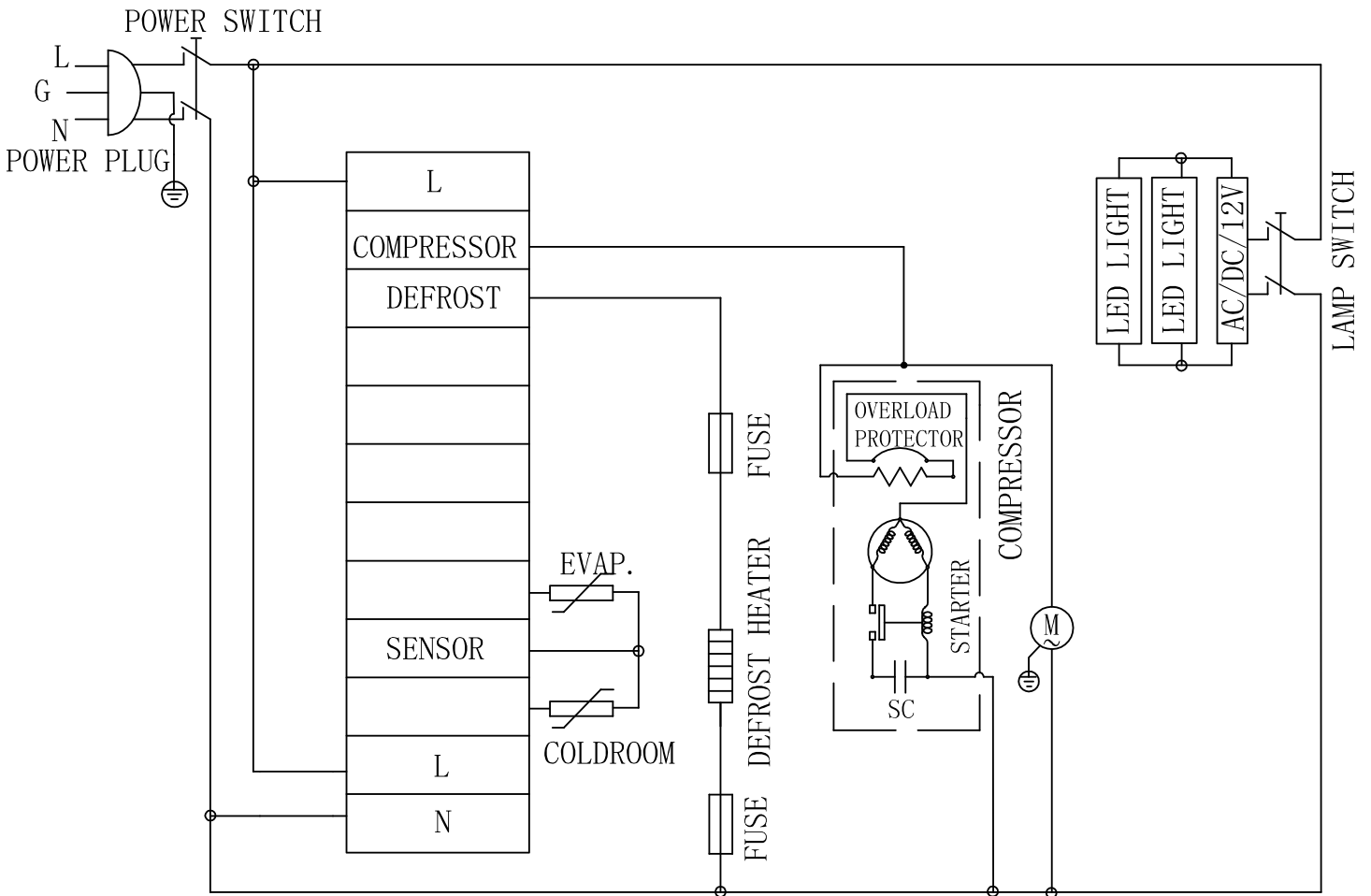


NEMA
5 - 15P
125VAC / 15 AMP

Electrical Schematics

Model RS-CN-0071D-BK 50106

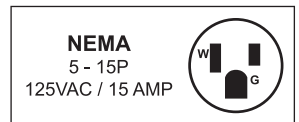
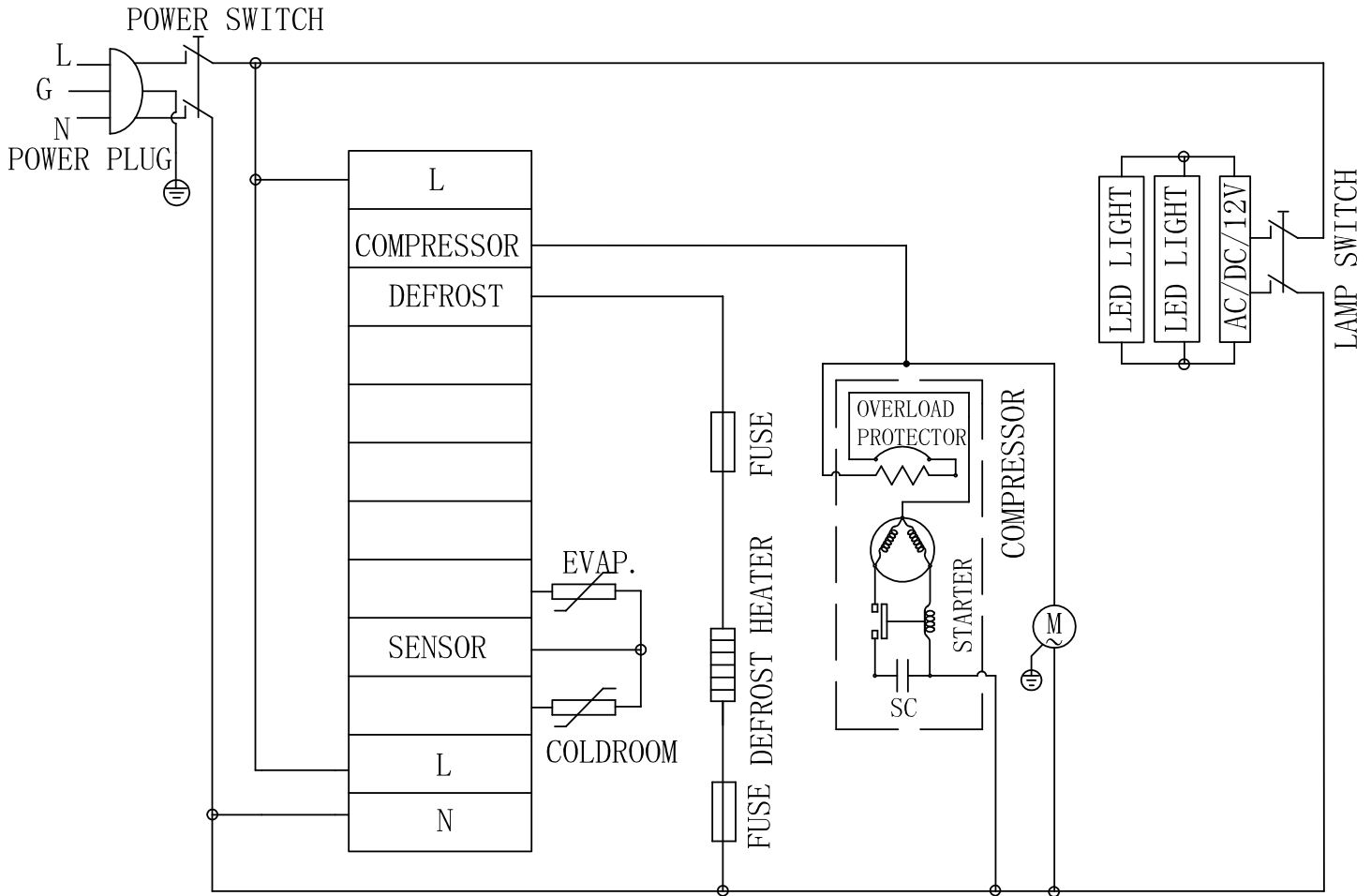
Model RS-CN-0071D-SS 50107



Electrical Schematics

Model RS-CN-0084D-BK 50108

Model RS-CN-0084D-SS 50109





Warranty Registration

Thank you for purchasing an Omcan product. To register your warranty for this product, complete the information below, tear off the card at the perforation and then send to the address specified below. You can also register online by visiting:

Merci d'avoir acheté un produit Omcan. Pour enregistrer votre garantie pour ce produit, complétez les informations ci-dessous, détachez la carte au niveau de la perforation, puis l'envoyer à l'adresse spécifiée ci-dessous. Vous pouvez également vous inscrire en ligne en visitant:

Gracias por comprar un producto Omcan usted. Para registrar su garantía para este producto, complete la información a continuación, cortar la tarjeta en la perforación y luego enviarlo a la dirección indicada a continuación. También puede registrarse en línea en:

<https://omcan.com/warranty-registration/>

For mailing in Canada

Pour postale au Canada

Por correo en Canadá

OMCAN

PRODUCT WARRANTY REGISTRATION

3115 Pepper Mill Court,
Mississauga, Ontario
Canada, L5L 4X5

For mailing in the US

Pour diffusion aux États-Unis

Por correo en los EE.UU.

OMCAN

PRODUCT WARRANTY REGISTRATION

4450 Witmer Industrial Estates, Unit 4,
Niagara Falls, New York
USA, 14305

or email to: service@omcan.com



Purchaser's Information

Name: _____

Address: _____

City: _____ Province or State: _____ Postal or Zip: _____

Country: _____

Dealer from which Purchased: _____

Dealer City: _____ Dealer Province or State: _____

Invoice: _____

Model Name: _____ Model Number: _____

Machine Description: _____

Date of Purchase (MM/DD/YYYY): _____

Would you like to extend the warranty? Yes No

Company Name: _____

Telephone: _____

Email Address: _____

Type of Company:

Restaurant Bakery Deli

Butcher Supermarket Caterer

Institution (*specify*): _____

Other (*specify*): _____

Serial Number: _____

Date of Installation (MM/DD/YYYY): _____

Thank you for choosing Omcan | Merci d'avoir choisi Omcan | Gracias por elegir Omcan



Since 1951 Omcan has grown to become a leading distributor of equipment and supplies to the North American food service industry. Our success over these many years can be attributed to our commitment to strengthen and develop new and existing relationships with our valued customers and manufacturers. Today with partners in North America, Europe, Asia and South America, we continually work to improve and grow the company. We strive to offer customers exceptional value through our qualified local sales and service representatives who provide convenient access to over 6,500 globally sourced products.

Depuis 1951 Omcan a grandi pour devenir un des "leaders" de la distribution des équipements et matériel pour l'industrie des services alimentaires en Amérique du Nord. Notre succès au cours de ces nombreuses années peut être attribué à notre engagement à renforcer et à développer de nouvelles et existantes relations avec nos clients et les fabricants de valeur. Aujourd'hui avec des partenaires en Amérique du Nord, Europe, Asie et Amérique du Sud, nous travaillons continuellement à améliorer et développer l'entreprise. Nous nous efforçons d'offrir à nos clients une valeur exceptionnelle grâce à nos ventes locales qualifiées et des représentants de service qui offrent un accès facile à plus de 6500 produits provenant du monde entier.

Desde 1951 Omcan ha crecido hasta convertirse en un líder en la distribución de equipos y suministros de alimentos en América del Norte industria de servicios. Nuestro éxito en estos años se puede atribuir a nuestro compromiso de fortalecer y desarrollar nuevas relaciones existentes con nuestros valiosos clientes y fabricantes. Hoy con socios de América del Norte, Europa, Asia y América del Sur, que trabajan continuamente para mejorar y crecer la empresa. Nos esforzamos por ofrecer a nuestros clientes valor excepcional a través de nuestro local de ventas y representantes de los servicios que proporcionan un fácil acceso a más de 6,500 productos con origen a nivel mundial.

