



COMMERCIAL REFRIGERATED DISPLAY

Operating Instruction Manual



CRD-1



CRD-1K



Model	Color	Volts ~ Hz	Watts	Amps	Power Cord	Overall Dimensions			Ship Wt
						Width	Depth	Height	
CRD-1	White	110-120V~ 60Hz	230W	2.7A	15A	17" (431.8mm)	17" (431.8mm)	39" (990.6mm)	85.89 lbs (39 kgs)
CRD-1K	Black				Plug Type	Shelf Dimensions			
		NEMA 5-15P	14-3/8" (365mm)	12-1/8" (307mm)					

BEFORE OPERATING ANY EQUIPMENT, READ AND FAMILIARIZE YOURSELF WITH THESE USE AND SAFETY INSTRUCTIONS

*Congratulations on your purchase of this WINCO® commercial countertop refrigerated display. WINCO takes pride in the quality of its products. When used as intended, and with proper care and maintenance, you will experience years of reliable operation from this equipment. To ensure best results, it is important that you read and follow the instructions in this manual carefully. **It's important to save these instructions for future reference.***

Commercial Refrigerated Display

Important For Future Reference

Please complete this information and retain this manual for the life of the product. For Warranty Service and/or parts, this information is required. Please see Page 8 for More information on your Warranty and how to register.

CRD-

Model Number

Serial Number

Date Purchased



WARNING: IMPROPER INSTALLATION, ADJUSTMENT, ALTERATION, SERVICE OR MAINTENANCE CAN CAUSE PROPERTY DAMAGE, INJURY, OR DEATH. READ THE INSTALLATION, OPERATION, AND MAINTENANCE INSTRUCTIONS THOROUGHLY BEFORE INSTALLING OR SERVICING THIS EQUIPMENT.

AVERTISSEMENT: TOUTE INSTALLATION, RÉGLAGE, MODIFICATION, RÉPARATION OU ENTRETIEN INCORRECT PEUT OCCASIONNER DES DOMMAGES MATÉRIELS, DES BLESSURES GRAVES OU LA MORT. LIRE LES INTRUCTIONS D'INSTALLATION, D'UTILISATION ET D'ENTRETIEN ATTENTIVEMENT AVANT D'INSTALLER OU DE RÉPARER CET APPAREIL.



CAUTION: THESE MODELS ARE DESIGNED, BUILT, AND SOLD FOR COMMERCIAL USE ONLY. IF THESE MODELS ARE POSITIONED SO THE GENERAL PUBLIC CAN USE THE EQUIPMENT, MAKE SURE THAT CAUTION SIGNS, WARNINGS, AND OPERATING INSTRUCTIONS ARE CLEARLY POSTED NEAR EACH UNIT SO THAT ANYONE USING THE EQUIPMENT WILL USE IT CORRECTLY AND NOT INJURE THEMSELVES OR HARM THE EQUIPMENT.

ATTENTION: CES MODÈLES SONT CONÇUS, FABRIQUÉS, ET VENDUS POUR UN USAGE COMMERCIAL SEULEMENT. SI CES MODÈLES SONT PLACÉS POUR QUE LE GRAND PUBLIC PUISSE LES UTILISER, ASSUREZ-VOUS QUE LES CONSIGNES D'ATTENTION, D'AVERTISSEMENT, ET LES INSTRUCTIONS D'UTILISATION SOIENT CLAIREMENT AFFICHÉES PRÈS DE CHAQUE UNITÉ DE SORTE QUE N'IMPORTE QUEL UTILISATEUR DE L'APPAREIL L'EMPLOIE CORRECTEMENT ET NE SE BLESSE PAS OU N'ENDOMMAGE PAS L'APPAREIL.



WARNING: A FACTORY AUTHORIZED SERVICE PROVIDER SHOULD HANDLE ALL MAINTENANCE AND REPAIR. BEFORE DOING ANY MAINTENANCE OR REPAIR, FOLLOW SERVICE SET UP ARRANGEMENT ON PAGE 8.

AVERTISSEMENT: UN TECHNICIEN AUTORISÉ PAR L'USINE DEVRA EFFECTUER TOUT L'ENTRETIEN ET LES RÉPARATIONS. AVANT DE FAIRE TOUT ENTRETIEN OU RÉPARATION, VEUILLEZ CONTACTER WINCO.



Introduction

Congratulations on the purchase of your WINCO® machine. Please take the time to carefully read through this manual. Proper operation and maintenance will ensure the best possible performance from this product for many years.

WINCO will not accept liability if:

- The instructions in this manual have not been followed correctly.
- Non-authorized personnel have tampered with the machine.
- Non-original spare parts are used.
- The machine has not been handled and cleaned correctly.
- There is any use damage to the unit.

Commercial Refrigerated Display

Table of Contents

Specifications	1
Warnings	2
Introduction	2
Packaging	3
Important Safeguards.....	4
Electrical Requirements	5
Operation: Unit and Control Panel	6
Cleaning & Maintenance	6
Safety	7
Service, Repair, Troubleshooting	7
Exploded View, Parts Listing	8
Limited Warranty	10

Package Contents

All units come with an Operating Instruction Manual and the following:

- Commercial Refrigerated Display
- 3 coated shelves
- 12 shelf-leveling hooks

WINCO prides itself on quality and service, ensuring that at the time of packing, all products are supplied fully functional and free of damage. Should you find any damage as result of freight, please contact your WINCO dealer immediately.

Function and Purpose

This unit is intended for use in commercial food-service operations, for the cooling and display of sealed food and beverage only.

It is not intended for household, industrial or laboratory use, to store potentially hazardous substances or to hold foods that require colder temperatures to maintain freshness.

NOTE:

This manual and the warning labels do not replace the need to be alert, to properly train and supervise operators, and to use common sense when using this equipment.

Unpacking the Equipment

DISPOSE OF ALL PACKAGING MATERIALS IN AN ENVIRONMENTALLY RESPONSIBLE MANNER.

1. Remove all packing materials and tape, as well as any protective plastic and cardboard, from the unit.
2. Clean any glue residue left over from the plastic or tape.
3. Place the unit in the desired position and height.

SAVE THE ORIGINAL BOX AND PACKAGING FOR USE IN PACKAGING AND SHIPPING THE EQUIPMENT IF SERVICES ARE NEEDED.

Important Safeguards

To ensure safe installation and operation, please carefully read and understand the following statements.

Unless the operator is adequately trained and supervised, there is a possibility of serious injury. Owners of this equipment bear the responsibility to make certain that this equipment is used properly and safely, and to strictly follow all of the instructions contained in this manual, and the requirements of local, state or federal law.

Owners should not permit anyone to touch this equipment unless they are over 18 years old, are adequately trained and supervised, and have read and understood this manual.

Owners should also ensure that no customers, visitors or other unauthorized personnel come in contact with this equipment. It is the responsibility of the owner and the operator to remain alert to any hazards posed by the function of this equipment.

If there is ever uncertainty about a particular task or the proper method of operating this equipment, ask an experienced supervisor.

Warnings

This manual contains a number of precautions to follow to help promote safe use of this equipment.

Disposing of Equipment

DISPOSE OF THE UNIT AND REFRIGERANT CHEMICALS IN AN ENVIRONMENTALLY RESPONSIBLE MANNER.

1. Remove all hinged doors from refrigerator to prevent accidental child entrapment and suffocation.
2. Dispose of refrigerant chemicals in compliance with environmental regulations.



Power must be disconnected at the power source prior to cleaning, or performing any service procedure or repairs.

FOR YOUR SAFETY

Do not store or use gasoline or other flammable vapors and liquids in the vicinity of this or any other appliance.

ESURE DE SECURITE

Ne pas entreposer ni utiliser de l'essence ni autres vapeurs ou liquides inflammables a proximite de cet appareil ou de tout autre appareil!

WARNING

Improper installation, adjustment, alteration, service or maintenance can cause property damage, injury or death. Read these installation, operating and maintenance instructions thoroughly before installing or servicing this equipment.

AVERTISSEMENT

L'installation, le réglage, la modification, la réparation ou l'entretien incorrect de cet appareil peut causer des dommages matériels, des blessures ou la mort. Lire attentivement les instructions d'installation, de fonctionnement et d'entretien avant de procéder a son installation ou entretien.

TO PURCHASER

Contact your local gas supplier and ask for instructions in the event the user smells gas. This information should be posted in a prominent location.

À L'ACHETEUR


Communiquez avec votre distributeur de gaz et informez vous quant aux procédés a suivre si vous détectez une odeur de gaz. Cette information doit etre affichée a un endroit facile d'accès et tres visible.


Warning

Improper installation, adjustment, alteration, service, or maintenance can cause property damage, injury, or death. Read the installation, operation, and maintenance instructions thoroughly before installing or servicing this equipment.

Caution Before Using Appliance

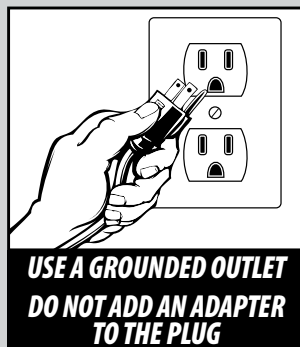
1. Read all instructions carefully. Do not use this appliance for anything other than its intended use.
2. Unplug from outlet when not in use, prior to installation or removing parts, and before cleaning.
3. To protect against the risk of electrical shock, do not immerse the appliance, cord or plug in water or other liquids.
4. Do not use an adapter.
5. Do not use an extension cord.
6. Do not remove ground.
7. Do not operate this device or any other electrical equipment with a damaged cord or plug, or after the unit malfunctions, or is dropped or damaged in any manner. Return to the nearest WINCO Authorized Service Center for examination, repair, and/or adjustment.
8. The use of accessory attachments not recommended by WINCO may cause fire, electric shock or injury.
9. Not intended for outdoor installation.
10. Do not let the cord hang over the edge of a table or counter, or touch hot surfaces.
11. Do not place on or near a heat source.
12. Do not overload the unit.
13. This appliance should always be on a stable and steady countertop or table.
14. This appliance is not intended for use by individuals (including children) with reduced or impaired physical, sensory or mental capabilities, or lack of experience or knowledge, unless they have been given proper supervision or instruction concerning the use of this appliance by a person responsible for their safety.
15. Children should be supervised at all times. To avoid injuring themselves or damaging the appliance in any way, they should not play with, in or on the refrigerator.
16. Do not place metal objects such as knives, forks or spoons into ventilation openings of the unit as it can cause damage to the refrigeration system.

WARNING ⚠️ AVERTISSEMENT	
 <p>Electrical Shock Hazard Keep water and other liquids from entering the inside of the unit. Liquid inside the unit could cause an electrical shock.</p> <p>Do not spray water or cleaning products. Liquid could contact the electrical components and cause a short circuit or an electrical shock. Do not use unit if power cord is damaged or has been modified.</p>	<p>Risque de choc électrique Conserver l'eau et d'autres liquides de pénétrer à l'intérieur de l'appareil. Liquide à l'intérieur de l'appareil pourrait provoquer un choc électrique.</p> <p>Ne pas pulvériser de l'eau ou des produits de nettoyage. Le liquide pourrait contacter avec les composants électriques et causer un court-circuit ou un choc électrique. Ne pas utiliser l'appareil si le cordon d'alimentation est endommagé, ou a été modifié.</p>

WARNING ⚠️ AVERTISSEMENT	
 <p>Fire Hazard. Correct installation precautions, procedures and regulations must be followed. Operation and safety training is necessary for all users of this equipment.</p>	<p>Risque d'incendie La surchauffe des vapeurs d'huile ou de l'huile peut s'enflammer et provoquer un incendie. Surveillez la température, la qualité et le niveau d'huile. Utilisez et entretenez le système d'élimination des vapeurs d'huile.</p>

Proper Grounding

This machine is provided with a three-pronged grounding plug. The outlet to which this plug is connected must be properly grounded. If the receptacle is not the proper grounding type, contact an electrician. **DO NOT**, under any circumstances, cut or remove the third ground prong from the power cord or use any adapter plug.



Unit Operation

1. Plug in the power cord.
2. Flip down grate below rear door to access the controller.
3. Set desired refrigeration temperature.
See "Control Panel Operation"
4. Close controller panel during operation.
5. Load display merchandiser with cold products only.

Control Panel Operation

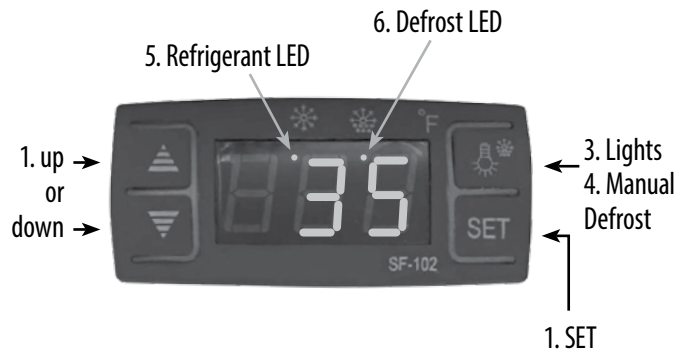
1. **Set temperature:** Press the SET button to display the set temperature. Press the "up" or "down" arrows to modify the number displayed. Press SET again to exit and display the unit's current temperature.
2. If no more buttons are pressed within 10 seconds, the display will show the unit's current temperature.
3. **Lights:** Press the "bulb" button to turn on or off.
4. **Manual Defrost:** Press the "bulb" button and hold for 6 seconds to start or stop defrost.
5. **Refrigerant LED:** when the compressor is running, the LED is on. When the refrigerator temperature is constant, the LED is off. During the delay start the LED flashes.
6. **Defrost LED:** during the defrost cycle, the LED is on. When it stops the LED is off. During the delayed display of defrost, the LED flashes.

Adjusting Height of Shelves

Note: shelves may be secured with zip ties for transportation.

1. Cut any zip ties and remove all desired shelves from the unit.
2. Remove the shelf-leveling supports and reposition to desired locations. Make sure that all 4 supports are at the same level for secure, even, flat shelves.
3. Place shelves back inside unit on the shelf supports.
4. (Optional) Add new zip ties to further secure shelving.

NOTE: In order for the inside of the refrigerator to maintain optimal coolness, the temperature of the room it is operated in should be kept at 77°F, or less.



Cleaning & Maintenance

Before using this equipment it must be cleaned and dried thoroughly. Clean all surfaces before use. Failure to clean surfaces before using the unit could cause food contamination.

- Always unplug the unit before cleaning. Unplug the unit when not in operation.
- Remove any food or beverages before wiping away debris.
- The interior of the refrigerated display should be cleaned periodically with warm, soapy water using a cloth. Clean the exterior of the unit by carefully wiping with a damp cloth. The glass walls and doors may be cleaned with glass cleaning solution.
- Do not immerse the device completely in water to clean. The appliance should also NOT be cleaned with a water jet.

Warning: do not allow excess water to drip into ventilation openings as this may affect the electrical and refrigeration systems, and/or drain out the bottom of the unit.

NOTE:

Proper cleaning instructions must be followed, otherwise operation of the unit may be seriously impaired. Do not wash parts in an automatic dishwasher.

WINCO authorized service personnel must perform any other servicing.

Safety

A WINCO® Approved Service Technician should carry out repairs if necessary. Do not remove any components or service panels on this product.

If the power cord is damaged, it must be replaced by a WINCO Approved Service Technician in order to avoid a hazard.

Service and Repair

There are no user-serviceable parts within this appliance. To avoid serious injury or damage, **NEVER** attempt to repair the unit yourself.

To initiate warranty service contact: support@wincous.com or call: 973-295-3899.

DO NOT send unit to WINCO without first contacting our customer service department.

See "Limited Warranty" section on page 10 for details.

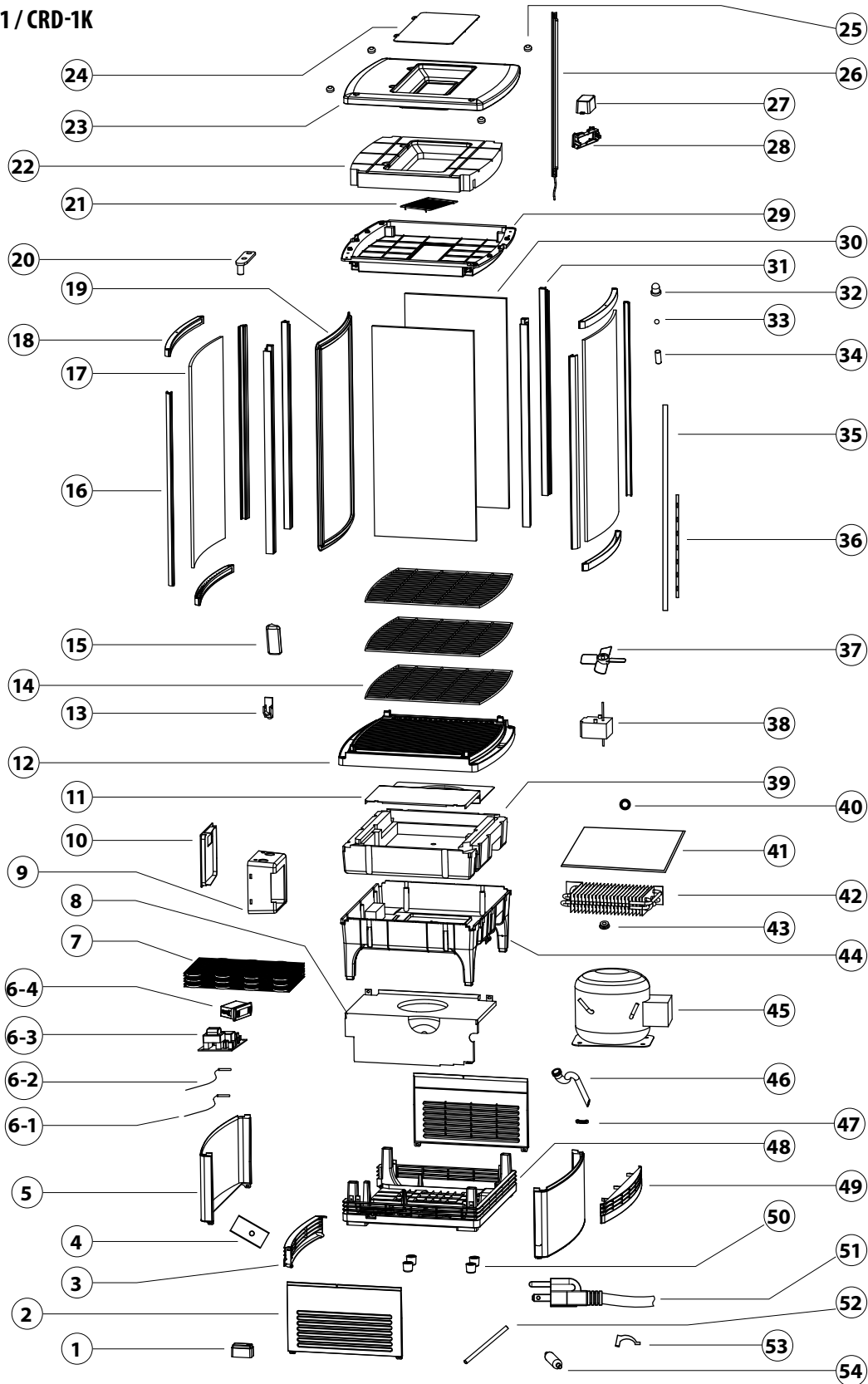
Troubleshooting

If your WINCO refrigerated display does not operate, please check the following prior to placing a service call.

PROBLEM	POSSIBLE CAUSE	RECOMMENDED SOLUTION
The unit is not turning on	Power supply cord	Check that the power supply cord is correctly plugged in and outlet is working.
	Plug/cord or extension wiring is damaged	Call WINCO to make service arrangements through their service provider network.
	Internal wiring fault	
The unit is on but not cooling	Temperature set too high	Check that the unit is correctly set to ideal temperature.
	Refrigeration system damaged or empty	Call WINCO to make service arrangements through their service provider network.
	Evaporator coil has become iced	Unload product and store as required, unplug unit overnight to allow coil to defrost. Next morning, plug in and load with cold product.
Light will not turn on	Press light switch on controller	Open control panel and press the light switch on the control interface.
	Internal wiring fault	Call WINCO to make service arrangements through their service provider network.
Unit is leaking/dripping water	Normal in humid environments	The refrigeration system causes condensation which drains below under the compressor to evaporate. In humid environments, water can build up faster than it can evaporate and may drip out of the unit. You may be able to set the refrigerator to a higher temp, and/or open the door less often, to alleviate this problem.

Exploded View

MODEL CRD-1 / CRD-1K



Parts List

MODEL CRD-1 / CRD-1K

NO.	PARTS	ITEM#
1	Base Feet	CRD-P1
2	Side Grill	
3	Plastic Door	CRD-P2
4	Metal Base of Fan Motor	
5	Front Grill	
6-1	Temperature Probe	
6-2	Defrost Probe	
6-3	Main Circuit Board	
6-4	Temperature Display (see Digital Control Panel)	CRD-P3
7	Condensor	
8	Condensor Cushion	
9	Control box	
10	Digital Control Panel	CRD-P3
11	Evaporator Protect Board	
12	Vent Tray	
13	Shelf Clip	CRD-P6
14	Shelf	CRD-P7
15	Handle	
16	Complete Door Assembly	Side Door Frame
17		Door Glass
18		Upper/Bottom Frame
19		Door gasket
		CRD-P8 (white)
		CRD-P8K (black)
20	Upper Gemel	
21	Inside Light Cover	
22	Lamp Insert Foam	
23	Outer Plastic Panel	
24	Outer Light Cover	
25	Screw Cover	

NO.	PARTS	ITEM#
26	LED Lamp	CRD-P10
27	LED Power Drive	CRD-P9
28	Control Bracker	
29	Light Cieling	
30	Side Glass	
31	Pole	
32	Bush	
33	Steel Ball	CRD-P16
34	Door Pin	CRD-P17
35	Side Stainless Iron Piece	
36	Top and Bottom Stainless Iron Piece	
37	Fan Blade	CRD-P12
38	Fan Motor	CRD-P13
39	Foam Base of Evaporator	
40	Fan Blade Spring	
41	Evaporator Tray	
42	Evaporator	
43	Motor Fixed Ring	
44	Plastic Base	
45	Compressor	
46	Upper/Bottom Seep Tube	
47	Wire Board	
48	Plastic Fence	
49	Insert Parts	
50	Round Feet	CRD-P14
51	Power Cord	
52	Charging Pipe	
53	Pipe Clip	
54	Dry Filter	



Limited Warranty

WINCO® warrants to the original purchaser of new equipment that said equipment, when installed in accordance with our instructions within North America and subjected to normal use, is free from defects in material or workmanship for a period of 1 year. The labor warranty is one year from original installation or 18 months from actual factory shipment date, whichever date occurs first.

THIS WARRANTY IS IN LIEU OF ALL OTHER WARRANTIES, WHETHER EXPRESSED OR IMPLIED. WINCO EXPRESSLY DISCLAIMS ANY IMPLIED WARRANTY OF MERCHANTABILITY OR EXPRESSED OR IMPLIED WARRANTY OF FITNESS FOR A PARTICULAR PURPOSE.

WINCO'S OBLIGATION AND LIABILITY UNDER THIS WARRANTY IS EXPRESSLY LIMITED TO REPAIRING AND REPLACING EQUIPMENT THAT PROVES TO BE DEFECTIVE IN MATERIAL OR WORKMANSHIP WITHIN THE APPLICABLE WARRANTY PERIOD.

IN NO EVENT SHALL WINCO BE LIABLE FOR INCIDENTAL OR CONSEQUENTIAL DAMAGES TO BUYER OR ANY THIRD PARTY, INCLUDING, WITHOUT LIMITATION, LOSS OF PROPERTY, PERSONAL INJURY, LOSS OF BUSINESS OR PROFITS OR OTHER ECONOMIC LOSSES, OR STATUTORY OR EXEMPLARY DAMAGES, WHETHER IN NEGLIGENCE, WARRANTY, STRICT LIABILITY, OR OTHERWISE.

This warranty is given only to the first purchaser from a retail dealer. No warranty is given to subsequent transferees.

Warranty does not cover product failures caused by: failure to maintain, neglect, abuse, damage due to excess water, fire, normal wear, improper set up and use. Periodic maintenance is not covered.

This warranty is not in force until such time as a properly completed and digitally signed Installation/Warranty Registration has been received by WINCO within 30 days from the date of installation.

WARRANTY SERVICE

To initiate warranty service contact: support@wincous.com
or call: 973-295-3899

DO NOT send unit to WINCO® without first contacting our customer service department.

REGISTER ONLINE AT:

<http://support.wincous.com>

Proof of purchase is required to extend warranty more than 1 year from date of shipment from the factory.

Limited Warranty

THE FOREGOING WARRANTY PROVISIONS ARE A COMPLETE AND EXCLUSIVE STATEMENT BETWEEN THE BUYER AND SELLER. WINCO® NEITHER ASSUMES NOR AUTHORIZES ANY PERSONS TO ASSUME FOR IT ANY OTHER OBLIGATION OR LIABILITY IN CONNECTION WITH SAID EQUIPMENT.

Examples of items not covered under warranty, but not limited to just these items:

1. Acts of God, fire, water damage, burglary, accident, theft.
2. Freight damage.
3. Improper installation or alteration of equipment.
4. Use of generic or after-market parts.
5. Repairs made by anyone other than a WINCO® designated service provider.
6. Lubrication.
7. Expendable wear parts, adjustable feet, blown fuses, lamps, etc.
8. Cleaning of equipment.
9. Misuse or abuse.

Please keep this manual in a safe place for future use!



winco[®]

Models: CRD-1, CRD-1K

www.wincous.com