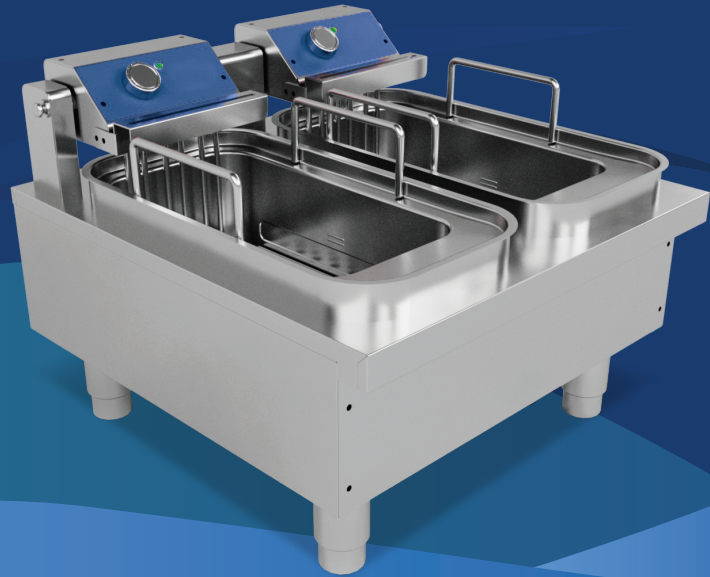


HEAVY-DUTY ELECTRIC COUNTERTOP FRYERS



FRHC-15E



FRHC-30E



- The Pegasus Electric Countertop Fryers are reliable and versatile solutions designed for professional frying applications.
- Stainless steel construction, ensures durability and easy cleaning.
- Stainless steel drawn frypot with stainless steel baskets included.

FEATURES

- Electric fryer with thermostatic temperature control.
- 15 lbs, and 30 lbs frypot capacities.
- 208V / 3 Phase or 208V / 1 Phase.
- Field convertible from 3 phase to 1 phase.
- Lift up heating element for easy cleaning.
- Safe oil drainage from the bottom via valve.
- Safety thermostat for overheat protection.
- One-year limited parts & labor warranty (USA & Canada only).

HEAVY-DUTY ELECTRIC COUNTERTOP FRYERS

TECHNICAL SPECIFICATIONS:

Model	Power	Voltage	Phase	Nominal Amps 208V - 3P	Nominal Amps 208V - 1P	Dimensions (W x H x D)	Shipping Weight
FRHC-15E	5.1 kW	208V	3P (field convertible to 1P)	14	24	12.1" x 18.5" x 31.7"	45 lb
FRHC-30E	10.2 kW	208V	3P (field convertible to 1P)	28	48	24" x 18.5" x 31.7"	90 lb

REQUIRED CLEARANCES:

	Non-Combustible	Combustible Construction
Left	0" (00 mm)	1" (25 mm)
Right	0" (00 mm)	3" (76 mm)
Back	2" (51 mm)	3" (76 mm)



Galaxy Group reserves the right to modify specifications or discontinue models without incurring obligation. Dimensions are nominal.