

Refrigeration Equipment 1-Door Refrigerated Work Top 27" Long

ITEM # _____

MODEL # _____

NAME # _____

SIS # _____

AIA # _____



738299 (KCHUCWT27R)

1-Door Refrigerated Work Top
27" Long

Short Form Specification

Item No. _____

1-door refrigerator counter top, with worktop, with exterior back panel, exterior bottom panel, and exterior top panel in galvanized steel, exterior side panel in 430 stainless steel; interior back, top and bottom panels in 304 stainless steel. Fin & tube condenser to improve the performances in high temperature environments. Automatic Defrost Cooling System and temperature control. Vinyl heavy duty adjustable, easy to handle and clean shelves. On-site reversible door feature for units with serial number 24020014 or later. External temperature display.

R600a gas in refrigeration circuit.
ETL Safety and Sanitation certified.
3/5 Years warranty.

Main Features

- External temperature display.
- Removable gasket for easy cleaning operations.
- Fin & Tube Condenser improves performance in high temperature environments.
- Automatic Defrost Cooling System provides worry-free performance.
- Electronic Temperature Control, quick and simple to set, with control display for easy monitoring.
- Heavy duty Vinyl coated steel shelves.
- Cabinet completely insulated with high density polyurethane for low environmental impact.

Construction

- Self-closing door with 90-degree stay-open feature.
- Heavy duty casters.
- Pre-wired heavy duty power cord.
- Heavy duty door hinges.
- Magnetic gasket removable without tools for easy cleaning.

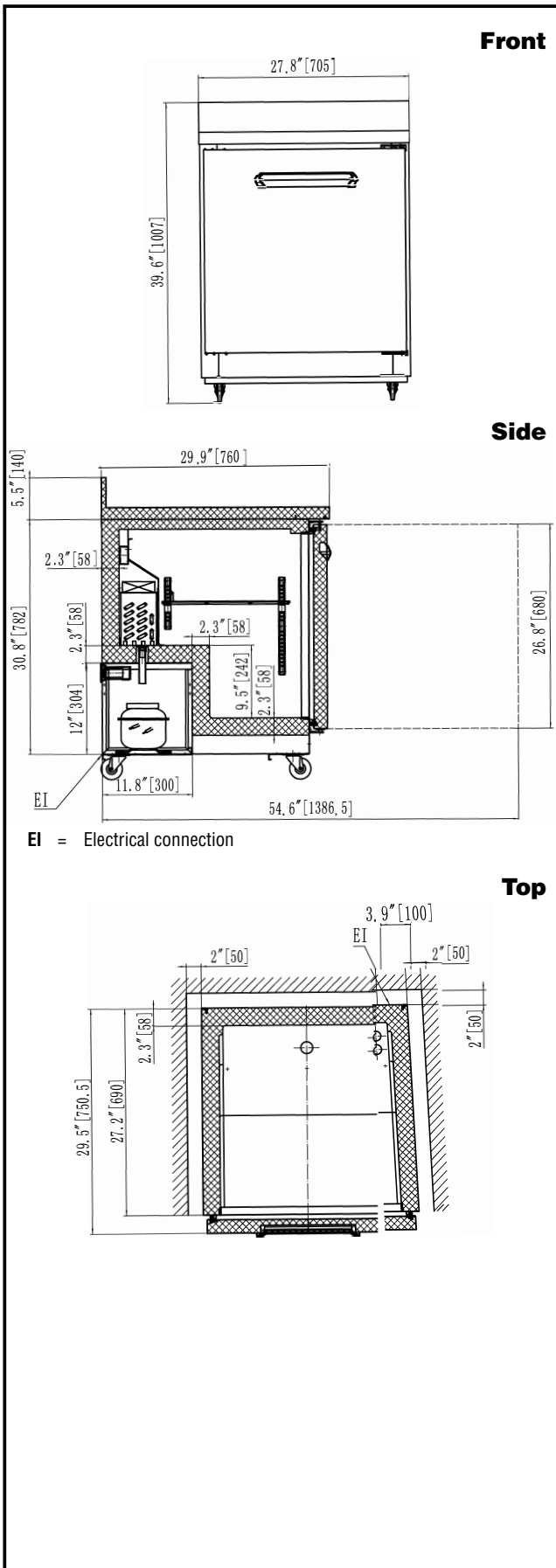
Sustainability

- High efficiency components to minimize the energy consumption still guaranteeing the highest performances.
- CFC and HCFC free (ecological refrigerant type: R600a).

Optional Accessories

- 1 ADJUSTABLE FOOT PNC 206445
- Drawer Kit for 27" Undercounter PNC 880614

APPROVAL: _____



Electric

| | | |
|-------------------------------|---------------------|------------------|
| Supply voltage: | 738299 (KCHUCWT27R) | 115 V/1 ph/60 Hz |
| Electrical power, max: | | 0.16 kW |
| Plug type: | | USA NEMA 5-15P |

Key Information:

| | |
|---|--|
| Door hinges: | Right Side |
| Capacity: | 6.50004 cu.ft. |
| External dimensions, Width: | 27 3/4" (705 mm) |
| External dimensions, Depth: | 29 15/16" (760 mm) |
| External dimensions, Height: | 39 5/8" (1007 mm) |
| Number and type of doors: | 1 Full |
| Internal Dimensions (depth): | 22 13/16" / (580 mm) |
| Internal Dimensions (height): | 23 1/2" / (597 mm) |
| Internal Dimensions (width): | 22 1/4" / (565 mm) |
| Shipping height: | 42 1/8" (1070 mm) |
| Shipping weight: | 174 lbs (79 kg) |
| Shipping volume: | 22.52 ft ³ (0.64 m ³) |
| Number and type of grids (included): | 1 - Vinyl-Coated Steel |
| Type of external material: | Stainless Steel |
| Type of internal material: | Polystyrene |
| Warranty: | 3 / 5 years |
| Approvals | ENERGY STAR;ETL C&US;ETL SANITATION |

Refrigeration Data

| | |
|------------------------------------|--------------|
| Compressor power: | 1/10 hp |
| Operating temperature min.: | 32 °F |
| Operating temperature max.: | 41 °F |
| Condenser type: | Fin & tube |
| Defrost type: | Auto Defrost |

Sustainability

| | |
|-----------------------------|----------|
| Current consumption: | 1.5 Amps |
| Refrigerant type: | R600a |
| GWP Index: | 3 |
| Refrigerant weight: | 70 g |



Refrigeration Equipment
1-Door Refrigerated Work Top 27" Long

The company reserves the right to make modifications to the products without prior notice. All information correct at time of printing.