

<b>MODEL: IDC-VCO15</b>	<b>PASTRY DISPLAY CASES – Combo Series</b>
-------------------------	--

### General Strengths

- ✓ **Control systems.** Higher precision in managing temperature settings. The ability to adjust temperature ranges to meet end user's requirements.
- ✓ **100% Tested.** All condenser units are 100% tested in helium chambers in order to detect refrigeration leaks.
- ✓ **Certified.** Audited and Certified by INTERTEK for compliance with UL 471 and NSF 7. AENOR audited and certified by internationally recognized firm. ISO 9001:2015 (Quality); ISO 14001:2015 (Environmental); OSHAS 18001:2007 (Prevention and Worker Safety)
- ✓ **Lighting.** Interior cabinet includes LED lighting, for brighter lighting and energy efficiency. LED saves 90% more energy compared to traditional fluorescent bulbs. Considerably increases product visibility.



Revision: 01 Date: 03/05/2019 IDC-VCO15\_FT\_62\_1

MODEL	Dimensions (inches) (mm)			Sides	Shelving	Ref.	Refrig. Amount (Lbs.) (gr.)	Temp. Range (°F) (°C)	Capacity (Cu. Ft.) (L)	Cond. Unit. H.P.	Case Amps	Crated Weight (Lbs.) (Kg.)
	W	D	H									
IDC-VCO15	61-1/2 <span style="color: blue;">1562</span>	35 <span style="color: blue;">810</span>	57-1/4 <span style="color: blue;">1455</span>	1-3/16+1-3/16 <span style="color: blue;">30+30</span>	1	R404A	0.99 <span style="color: blue;">450</span>	35°F / 41°F <span style="color: blue;">+2°C/+5°C</span>	11.79 <span style="color: blue;">334</span>	7/8	10.2	700 <span style="color: blue;">318</span>

ETL LISTED TO UL471 STANDARD AND SANITATION CLASSIFIED TO NSF7 – WE RESERVE THE RIGHT TO CHANGE SPECIFICATIONS WITHOUT PRIOR NOTICE



**Infrico USA Corp.**  
 1409 N.W. 84th Avenue  
 Doral, FL 33126  
 1.305.777.9599 Office  
 1.305.777.9598 Fax

[www.infrico.us](http://www.infrico.us)  
 service@infrico.com

**APPROVALS:** \_\_\_\_\_  
**AVAILABLE AT:** \_\_\_\_\_



**MODEL: IDC-VCO15**

**PASTRY DISPLAY CASES – Combo Series**

**STANDARD FEATURES**

➤ **Exterior**

- Laminated steel plate,
- Exhibition area in EPOXI,
- Decoration DM lacqued,
- Hinged front tempered glass,
- Rear sliding doors,
- Double lateral glass sides,
- Dry countertop,
- Night curtain,

➤ **Interior**

- Enamelled steel base,
- LED lighting in the front,
- LED lighting in canopy and under each shelf,

➤ **Insulation**

- CFC-Free polyurethane insulation, entire cabinet structure is foamed-in place using a high-density polyurethane insulation,
- Low GWP & Zero ODP effect.

➤ **Refrigeration**

- Digital temperature controller with automatic defrost system,
- Rear electronic thermostat,
- Forced air refrigeration system,
- Stainless Steel Evaporative double trays, first, by hot gas, second by electrical resistance.
- Refrigerant gas R404A,
- Case engineered to operate at 75°F and 55% relative humidity.

➤ **Electrical**

- Cord and NEMA 5-20P plug,
- Electrical connection is 115V / 1ph / 60 Hz.



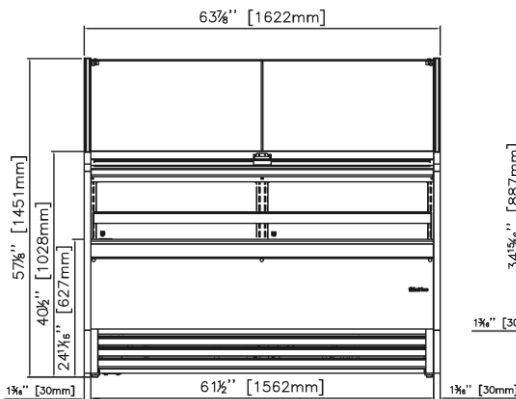
➤ **ETL Listed to UL471 Standard and Sanitation classified to NSF7.**

**OPTIONAL FEATURES**

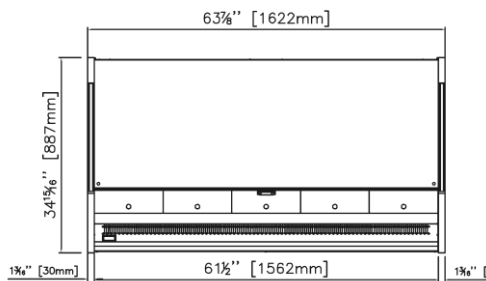
- ✓ Customizable decoration for the front and sides,
- ✓ White color,
- ✓ Electrical connection is 220-230 V / 1ph / 50 Hz (plug type varies).

**PLAN VIEW**

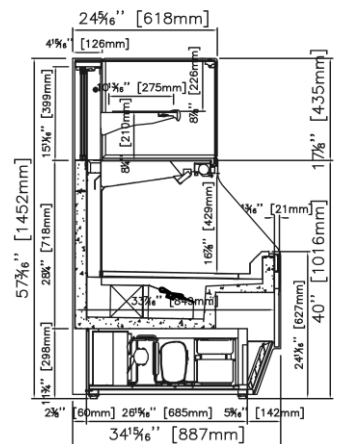
**ELEVATION**



**PLAN VIEW**



**RIGHT VIEW**



ETL LISTED TO UL471 STANDARD AND SANITATION CLASSIFIED TO NSF7 – WE RESERVE THE RIGHT TO CHANGE SPECIFICATIONS WITHOUT PRIOR NOTICE



**Infrico USA Corp.**  
 1409 N.W. 84th Avenue  
 Doral, FL 33126  
 1.305.777.9599 Office  
 1.305.777.9598 Fax

[www.infrico.us](http://www.infrico.us)  
[service@infrico.com](mailto:service@infrico.com)

**APPROVALS:** \_\_\_\_\_ **AVAILABLE AT:** \_\_\_\_\_