

Refrigeration Equipment 1-Glass Door ADA Height Under Counter Freezer 24" Long

ITEM # _____

MODEL # _____

NAME # _____

SIS # _____

AIA # _____



738326 (KCHUCGD23F)

1-Glass Door ADA Height Under Counter Freezer 24" Long

Short Form Specification

Item No. _____

1-glass door ADA compliant undercounter freezer with exterior back panel and exterior bottom panel in galvanized steel, exterior side and top panel in 430 stainless steel; interior back, top and bottom panels in high impact white polystyrene. Fin & tube condenser to improve the performances in high temperature environments. Automatic Defrost Cooling System and temperature control. Vinyl heavy duty adjustable, easy to handle and clean shelves. External temperature display.

R290 gas in refrigeration circuit.
ETL Safety and Sanitation certified.
3/5 Years warranty.

Main Features

- ADA Height Compliant
- External temperature display.
- Removable gasket for easy cleaning operations.
- Fin & Tube Condenser improves performance in high temperature environments.
- Automatic Defrost Cooling System provides worry-free performance.
- Electronic Temperature Control, quick and simple to set, with control display for easy monitoring.
- Heavy duty Vinyl coated steel shelves.
- Cabinet completely insulated with high density polyurethane for low environmental impact.

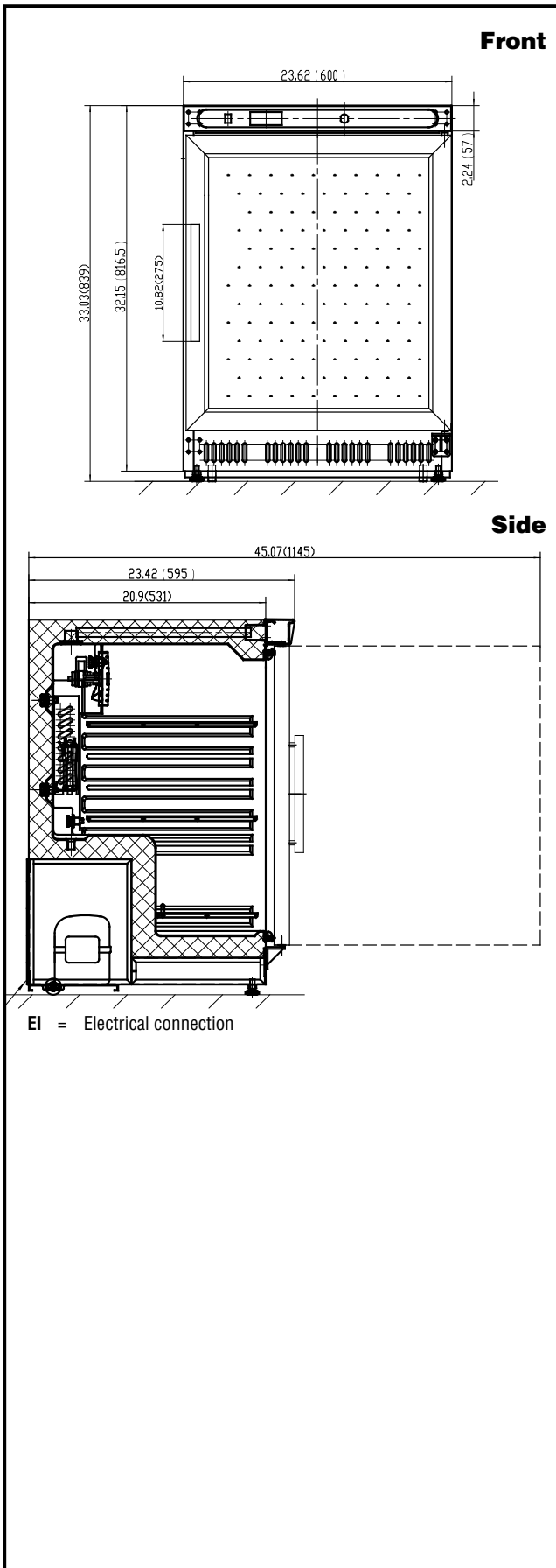
Construction

- Lockable door.
- Magnetic gasket removable without tools for easy cleaning.
- Pre-wired heavy duty power cord.
- Heavy duty door hinges.

Sustainability

- CFC and HCFC free, highly ecological refrigerant type: R290 (ecological gas in foam: cyclopentane). Hydrocarbon refrigerant gas R290 for the lowest environmental impact (GWP=3), to reduce green house and ozone depletion effects.
- High efficiency components to minimize the energy consumption still guaranteeing the highest performances.

APPROVAL: _____



Electric

Supply voltage:	738326 (KCHUCGD23F)	115 V/1 ph/60 Hz
Electrical power, max:		0.66 kW
Plug type:		USA NEMA 5-15P

Capacity:

Gross capacity:	4.4 cu. feet
------------------------	--------------

Key Information:

Door hinges:	Right Side
External dimensions, Width:	23 5/8" (600 mm)
External dimensions, Depth:	23 7/16" (595 mm)
External dimensions, Height:	33 1/32" (839 mm)
Internal Dimensions (depth):	15 15/16" / (405 mm)
Internal Dimensions (height):	24 5/8" / (625 mm)
Internal Dimensions (width):	19 5/16" / (491 mm)
Shipping height:	41 5/16" (1050 mm)
Shipping weight:	123 lbs (56 kg)
Shipping volume:	16.39 ft ³ (0.46 m ³)
Type of external material:	Stainless Steel
Type of internal material:	High Impact White Polystyrene
Warranty:	3 / 5 years
Approvals	ETL C&US; ETL SANITATION

Refrigeration Data

Compressor power:	1/4 hp
Operating temperature min.:	-7.6 °F
Operating temperature max.:	-4 °F
Condenser type:	Fin & tube
Defrost type:	Automatic

Sustainability

Current consumption:	5.5 Amps
Refrigerant type:	R290
GWP Index:	3
Refrigerant weight:	85 g