



## TRAC 878

### Automatic Tray Washer

- 878 Trays Per Hour | 15" Tray
- Optional Tray Dryer and Stacker Add-Ons
- Triple Tank Configuration
- Made in the USA

## STANDARD FEATURES

- Tank heat: 15 kW electric immersion heater or steam injector
- Capillary thermometers for wash and rinse
- In-line thermometer for final rinse
- Vacuum breaker on all incoming water lines
- Manifold clean-out brush
- Vents with adjustable damper controls
- Single point electrical connection: motor, controls and tank heat (Booster requires a separate connection)
- Inspection door
- Stainless steel frame, legs and feet
- Stainless steel front enclosure panel
- Automatic tank fill
- Low water protection
- Detergent connection provision
- Top mounted NEMA 12 control panel
- Simplified scrap screen design

- Door safety switch
- Standard frame drip proof motors
- Override switch for de-liming
- End caps/pipe plugs secured to prevent loss
- Tray unload table

## OPTIONS

- Stainless steel steam coil tank heat
- Steam booster
- Electric booster
- Pressure reduction valve and line strainer
- Security package
- Insulated hood and door
- Chemical sanitizer injector package for low temperature operations (pump by others)
- Tray Dryer
- Tray Stacker

## SPECIFIER STATEMENT

Specified unit will be an Insinger TRAC 878 automatic triple tank tray washer. Features include capillary thermometers for wash and rinse, inline thermometer for final rinse, vacuum breaker, vents with adjustable damper controls, inspection door, 304 stainless steel construction, automatic tank fill, low water protection, door safety switch, and a tray unload table.



## SPECIFICATIONS

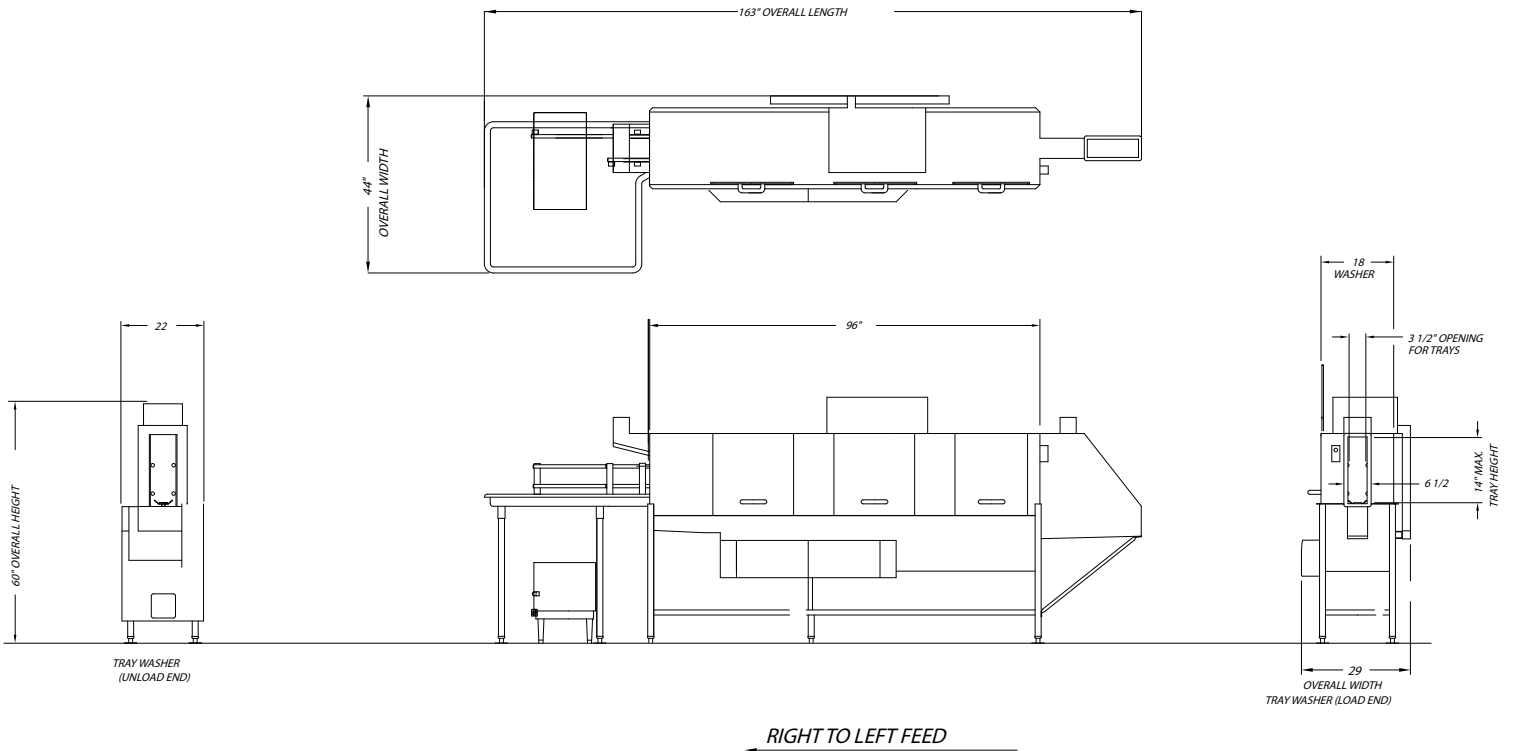
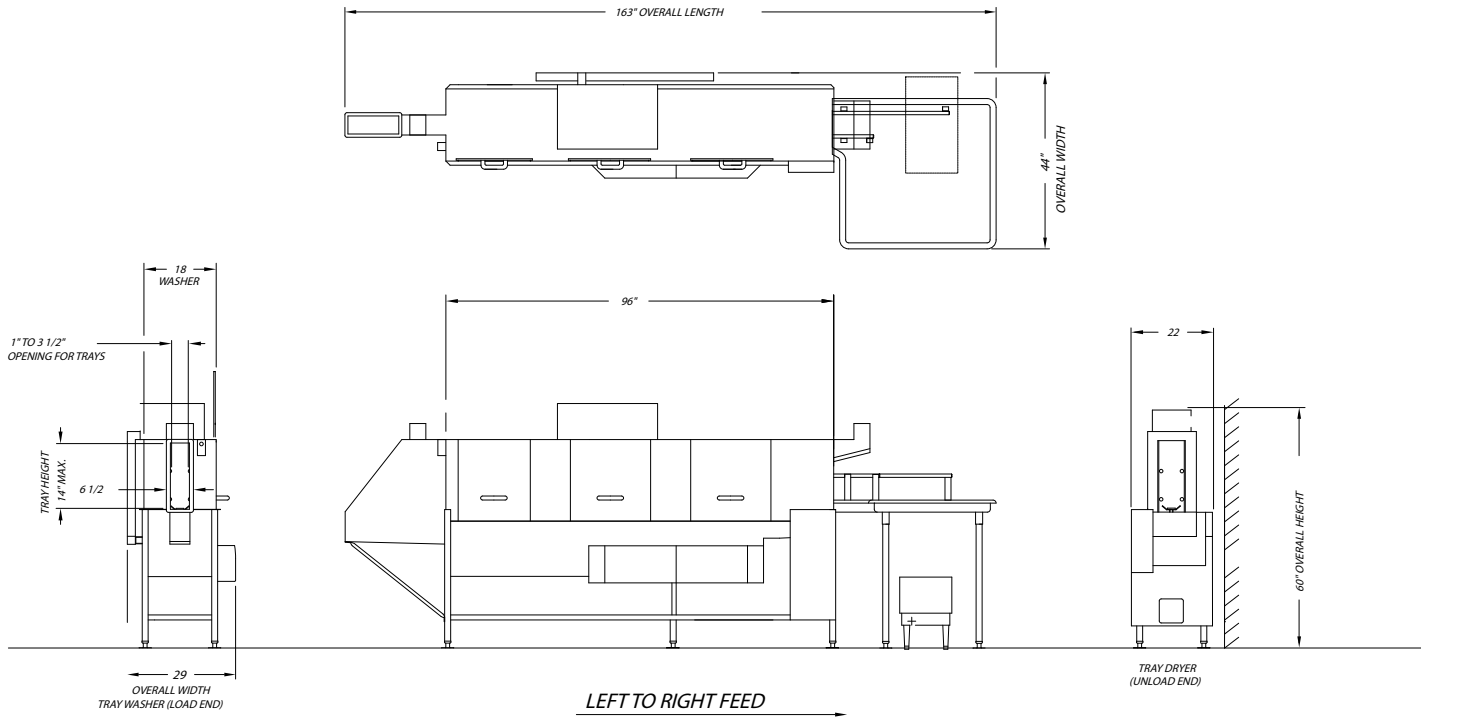
Capacity	Trays Per Hour	878
Heating & Venting	Wash Tank Heat	8 kW
	Rinse Tank Heat	8 kW
	Booster Heat (40°F Rise)	24 kW
	Booster Heat (70°F Rise)	45 kW
	Venting (Load End)	100 CFM
	Venting (Unload End)	300 CFM
	Water	Water Inlet Temperature
Water Consumption (20 PSI)		197 gal/hr
Wash Tank Capacity		24.1 gal
Peak Drain Flow		23 gal/min
Steam		Steam Tank Consumption (20 PSI)
Other	Pre-Wash Motor HP	0.5
	Drive Motor HP	1/8
	Wash Motor HP	3
	Rinse Motor HP	2
	Shipping Weight	1100

## ELECTRICAL

		Electric (TRAC)	24 kw Booster	36 kw Booster
Electrical Options	208/60/3	67.1 amps	66.7 amps	100 amps
	240/60/3	59.0 amps	57.8 amps	86.7 amps
	380/50/3	29.4 amps	Contact Factory	
	480/60/3	36.9 amps	28.9 amps	43.4 amps
	<b>Steam</b>			
Electrical Options	208/60/3	22.7 amps		
	240/60/3	20.6 amps		
	380/50/3	10.2 amps		
	480/60/3	12.5 amps		

Contact Insinger Sales at 800-344-4802 for an installation drawing specific to your application.  
 Note: Due to product improvement we reserve the right to change information and specifications without notice.

# TECHNICAL DRAWINGS



Contact Insinger Sales at 800-344-4802 for an installation drawing specific to your application.  
 Note: Due to product improvement we reserve the right to change information and specifications without notice.