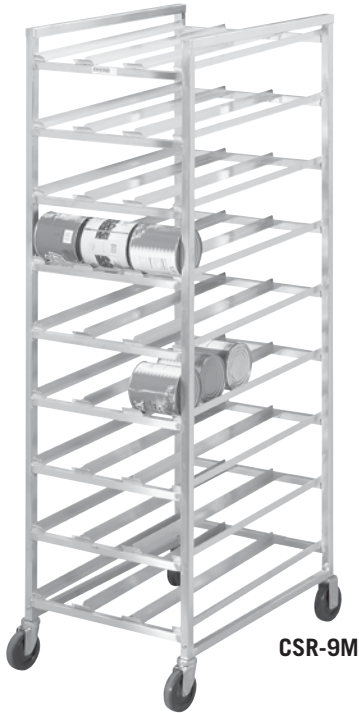


# Can Racks



CSR-9M



CSR-99M



CSR-156

FULL SIZE CAN RACKS			HEAVY DUTY SERIES		STANDARD SERIES	
Capacity: 162 – #10 Cans			ALUMINUM CONSTRUCTION		ALUMINUM CONSTRUCTION	
	H	W	D	MODEL	WT	
STATIONARY	76"	25½"	35"	CSR-99	75	CSR-9
MOBILE	82¼"	25½"	35"	CSR-99M	115	CSR-9M

FIRST IN / FIRST OUT CAN RACKS					
Capacity: 156 – #10 Cans					
MODEL		H	W	D	WT
CSR-156	STATIONARY	82"	25½"	42¼"	165
CSR-156M	MOBILE	79"	25½"	42¼"	185

† Flyer Item

HALF SIZE MOBILE ALL-WELDED CAN RACK					
ALUMINUM CONSTRUCTION					
Model	72 – #10 CANS	H	W	D	WT
CSR-4M	Aluminum Top	43"	25¾"	35¼"	43
CSR-44M	HD / Alum. Top	43"	25¾"	35¼"	48
CSR-4MP	Poly Top	43"	25¾"	35¼"	57
CSR-4MS	Stainless Steel Top	43"	25¾"	35¼"	48
54 – #10 CANS					
CSR-3	No Top	34"	25¾"	35¼"	30
CSR-3M	Aluminum Top	34"	25¾"	35¼"	39
CSR-3MP	Poly Top	34"	25¾"	35¼"	53
CSR-3MS	Stainless Steel Top	34"	25¾"	35¼"	44

CAN AND STORAGE RACK					
ALUMINUM CONSTRUCTION					
Model	80 – #10 CANS	H	W	D	WT
CSBR-80	STATIONARY	76"	25½"	35"	75
CSBR-80M	MOBILE	82¼"	25½"	35"	115

† Flyer Item

### OPTIONS:

- CSR-M Mobile Can Rack Kit, Includes 4 Caster –
- /011 Caster Brakes (2) –
- /052 HD Plate Caster Upgrade, 5" x 2" – HD
- /5B Caster Brakes (2) –



CSR-4M



Perfect for storing both cans and boxes.

CSBR-80M

