

Item #: _____ Qty #: _____
 Model #: _____
 Project #: _____



*Flat Top
w/ K-50
Deck Mount
Faucet Shown*



*10" Backsplash
w/ K-1
Splash Mount
Faucet Shown*

Includes Faucet & **K-6** 3-1/2" Basket Drain(s)

Flat Top, 1", 1-1/2" & 5 Backsplash Include Deck Mount Faucet

- Single Sink Bowl provided with K-50 Swing Spout Faucet
- Double Sink Bowls provided with K-53 Swing Spout Faucet

10" Backsplash Include Splash Mount Faucet

- Single & Double Sink Bowls provided with K-1 Swing Spout Faucet
- Splash Mount Faucet Available On 5" Backsplash - Add TA-11Z

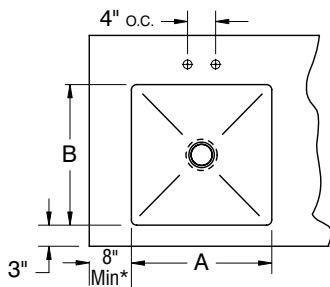
Size		Single Bowl	Double Bowl
A	B	Model#	Model#
10"	14" x 5"	TA-11Q	TA-11Q-2†
10"	14" x 10"	TA-11F	TA-11F-2†
14"	16" x 12"	TA-11J	TA-11J-2
16"	20" x 8"	TA-11A**	TA-11A-2**
16"	20" x 12"	TA-11B**	TA-11B-2**
16"	20" x 14"	TA-11V**	TA-11V-2**
16"	24" x 14"	TA-11K**	TA-11K-2**
18"	18" x 14"	TA-11N	TA-11N-2
18"	24" x 14"	TA-11L	TA-11L-2
20"	20" x 8"	TA-11C*	TA-11C-2*
20"	20" x 12"	TA-11D*	TA-11D-2*
20"	20" x 14"	TA-11W*	TA-11W-2*
20"	24" x 14"	TA-11P*	TA-11P-2*
30"	20" x 14"	TA-11S*	TA-11S-2*
24"	24" x 14"	TA-11E*	TA-11E-2*
30"	24" x 14"	TA-11T*	TA-11T-2*
36"	24" x 14"	TA-11R*	TA-11R-2*
28"	20" x 14"	TA-11G*	TA-11G-2*

* Only Installed In Tables 30" Wide or Wider

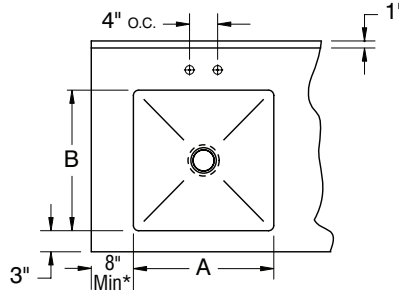
** Bowls Are Turned In 24" Wide Tables

† K-50 Swing Spout Faucet (Double Bowl)

FLAT TOP, 1" or 1-1/2" REAR SPLASH

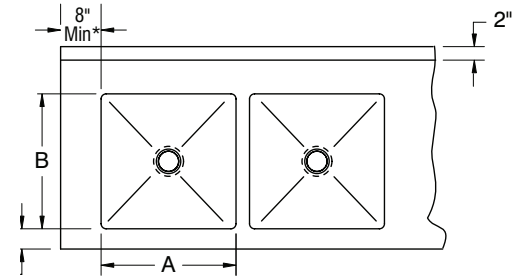


5" REAR SPLASH with 1" RETURN



*4" minimum on enclosed base tables

10" REAR SPLASH with 2" RETURN



WARNING: Equipment that include faucets on this page may contain a chemical known to the State of California to cause cancer, birth defects or other reproductive harm.

Faucets & Accessories

_____	K-2B	Poly-Vance Sink Cutting Board for 14" x 16" Deep Drawn Bowls
_____	K-2C	Poly-Vance Sink Cutting Board for 16" x 20" Deep Drawn Bowls
_____	K-2D	Poly-Vance Sink Cutting Board for 18" x 24" Deep Drawn Bowls
_____	K-2E	Poly-Vance Sink Cutting Board for 20" x 20" Deep Drawn Bowls
_____	K-2F	Poly-Vance Sink Cutting Board for 24" x 24" Deep Drawn Bowls
_____	K-2J	Poly-Vance Sink Cutting Board for 18" x 18" Deep Drawn Bowls
_____	K-4	Lever Drain Bracket
_____	K-5	Lever Drain
_____	K-12	Deck Mounted Soap Dispenser
_____	K-15	Lever Drain With Overflow
_____	K-50	8" Deck Mounted 4" O.C. Swing Spout Faucet
_____	K-50OMIT	Omit Swing Spout
_____	K-52	3 1/2" Spout Deck Mounted 4" O.C. Gooseneck Faucet
_____	K-52OMIT	Omit Swing Spout Gooseneck Faucet
_____	K-53	12" Deck Mounted 4" O.C. Swing Spout Faucet
_____	K-54	8-1/4" Water Filler Faucet
_____	K-54A	12" Water Filler Faucet

_____	K-55	8 1/2" Spout 4" O.C. Deck Mounted Gooseneck Faucet
_____	K-60	4" O.C. Splash Mounted Gooseneck Faucet
_____	K-62	X.H.D. 4" O.C. Deck Mounted Gooseneck Faucet
_____	K-105	14" Splash Mounted 8" O.C. Faucet
_____	K-112	Extra Heavy Duty 12" Splash Mounted Faucets
_____	K-316-LUHA	Wrist Handles For Splash Mounted Faucets
_____	K-350	Residential Finish & Packaging
_____	K-452	6" x 9" Control Bracket
_____	K-453	14" x 16" Control Bracket
_____	K-460	Installation Of Disposal Cone w/ 6" x 9" Control Bracket
_____	K-461	Installation Of Collar w/ 6" x 9" Control Bracket
_____	K-470	14" Deep Bowls
_____	K-472	Faucet Hole Revision
_____	DTA-100	Prerinse Basket for 20" x 20" Bowls
_____	DTA-125	Prerinse Basket for 16" x 20" Bowls